

SAMPLE

REGIONAL OVERVIEW: TRENDS AND FORECASTS

I-85 Region, Alabama

(The I-85 Region includes the counties linked by the Interstate-85 Corridor from Montgomery to the Alabama-Georgia state line: Bullock, Chambers, Elmore, Lee, Macon, Montgomery, Russell, and Tallapoosa Counties)



**ECONOMIC & COMMUNITY
DEVELOPMENT INSTITUTE**
*Auburn University &
Alabama Cooperative Extension System*



INTRODUCTION

Executive Summary	3
Regional Indicators, 2006	4
Economic Base, 2007	6
Industry Overview, 2003-2012	8
Workforce Overview, 2003-2012	12
Human Capital Overview, 2007	16
Demographics Overview, 2003-2012	19
Data Sources and Methodology	23

About this Report

This report is intended to provide a brief, high-level overview of a region’s past, current, and projected economy and population. It can also be used to identify specific areas for further research; common follow-up reports include detailed industry / occupation rankings or focused reports on single, detailed industries /occupations.

The report is driven by a proprietary, integrated database created by Economic Modeling Specialists, Inc. EMSI processes data from over 80 official government sources to produce a best-in-class source of detailed and comprehensive economic information. This means that EMSI’s data will usually differ from what is published by any single government agency.

This database also powers EMSI’s web-based regional analysis suite, Strategic Advantage, which the Economic & Community Development Institute at Auburn University has exclusive access to for the entire state of Alabama.

For more information about EMSI’s reports, data, and analysis tools, please contact Amelia Stehouwer (ECDI) at hallame@auburn.edu or (334) 844-4704.

Terms and Definitions

Earnings: For industries, total annual earnings per worker is reported; these earnings include wages, salaries, profits, and benefits. Occupational earnings are reported as median hourly wage only.

Housing Unit: A house, apartment, mobile home or trailer, group of rooms, or single room that is occupied, or, if vacant, is intended for occupancy as separate living quarters.

Industry: A category of business activity defined by the North American Industry Classification System (NAICS).

Jobs: Full-time and part-time positions (not unduplicated headcount of workers) for nearly all types of workers (payroll employees, proprietors, railroad workers, military personnel) in both the public and private sector.

Knowledge and Skills: Areas of academic and applied competency in categories defined by the U.S. Department of Labor’s O*NET initiative.

Occupation: A category of workers defined by the Standard Occupational Classification (SOC).

Postsecondary Institution: Any institution for adult education, including private career schools, that reports data to the U.S. Department of Education.

Projections: Estimates of future job or population numbers based on (1) recent historical regional trends and (2) published forecasts created by a consensus of state and federal agencies.

Proprietors: Nonfarm, non-payroll jobs such as those held by small business owners and the self-employed. These jobs are excluded from typical government labor market data but are included in the EMSI Complete Employment data set.

State: For region/state comparisons, regions that include portions of multiple states are compared to the aggregate data for all states. Regions that include an entire state are compared to the nation only.

SAMPLE

EXECUTIVE SUMMARY **SAMPLE**

Population

2008 Estimated Population

587,461

2003-2007 Population Growth

15,239 (2.7%)

2003-2007 Net Migration

4,236

Economy

2008 Total Estimated Jobs

337,537

2003-2007 Job Growth

29,186 (10%)

2007 Average Unemployment Rate

3.8%

Industries

Top Economic Base Sectors

Government
Manufacturing
Services

2007 Largest Industries (Employment)

Government
Transportation and Utilities
Professional and Business Services
Manufacturing
Education and Health Services

2003-07 High Growth Industries (% Growth)

Professional and Business Services
Construction
Leisure and Hospitality
Financial Activities
Other Services

Workforce

Median Hourly Earnings, All Occupations

\$14.67 (\$3.05 below U.S. avg.)

2007 High Occupation Groups (Employment)

Service
Professional and Related
Office and Administrative Support
Sales and Related
Management, Business and Financial

2003-07 High Growth Occupation Groups (%)

Construction and Extraction
Service
Sales and Related
Management, Business and Financial
Installation, Maintenance and Repair

REGIONAL INDICATORS, 2006

Note: Indicators, unlike other EMSI data, are available at the county level only. If the selected region is defined by ZIPs, the county-level region that contains it has been used to aggregate these indicators.

SAMPLE

In- and Out-Migration (Net Migration: 4,263)

In-Migration

In-migration	Percent of Population
26,948	4.61%

Top Source Regions	Migrators
Muscogee, GA	2,536
Autauga, AL	1,577
Jefferson, AL	930
Lowndes, AL	477
Mobile, AL	458

Source: U.S. Internal Revenue Service

Out-Migration

Out-migration	Percent of Population
22,685	3.88%

Top Source Regions	Migrators
Muscogee, GA	1,868
Autauga, AL	1,836
Jefferson, AL	961
Shelby, AL	450
Foreign - APO/FPO Zips	434

Housing Units and Rents (Total Units: 266,765)

Average Monthly Rent

Area	0 Bedrooms	1 Bedroom	2 Bedrooms	3 Bedrooms	4 Bedrooms
Region	\$405.00	\$463.00	\$544.00	\$724.00	\$825.00
State	\$390.00	\$439.00	\$514.00	\$670.00	\$786.00
Nation	\$456.00	\$506.00	\$611.00	\$805.00	\$912.00

Source: U.S. Census Bureau, U.S. Department of Housing and Urban Development

Hourly Earnings, 2007

(Based on median hourly earnings by occupation)

Area	Median Hourly Earnings
Region	\$15.67
State	\$16.16
Nation	\$18.72

Source: EMSI Complete Employment, 2007

Patents Granted, 2007

Area	Patents Granted	Patents per 10,000 People
Region	90	1.54
State	785	1.70
Nation	238,117	7.88

Source: U.S. Patent and Trademark Office

Proprietors, 2005

Area	Proprietors as a % of Workforce
Region	15.82%
State	18.2%
Nation	19.37%

Source: U.S. Bureau of Economic Analysis

Education Indicators, 2008

SAMPLE

High School Graduates (1999)

<u>Area</u>	<u>HS Graduates</u>	<u>% of Population Age 25+</u>
Region	267,693	75.79%
State	2,173,319	75.27%
Nation	146,496,014	80.40%

Source: ECDI Computation based upon data from U.S. Census 2000 Summary File 3, Table P37

Population with a Graduate Education

<u>Area</u>	<u>Population with PG Education</u>	<u>% of Population Age 25+</u>
Region	35,272	9.55%
State	235,447	7.65%
Nation	20,857,027	10.37%

Source: U.S. Census; EMSI Demographic Data

Population with Some College

<u>Area</u>	<u>Population with Some College</u>	<u>% of 25+ Cohort</u>
Region	195,348	52.89%
State	1,546,620	50.23%
Nation	114,795,677	57.08%

Source: U.S. Census; EMSI Demographic Data

Postsecondary Institutions (2006)

<u>Area</u>	<u>Institutions</u>	<u>Institutions per 100,000 People</u>
Region	15	2.56
State	78	1.70
Nation	6,865	2.29

Source: U.S. Department of Education, IPEDS

ECONOMIC BASE, 2007

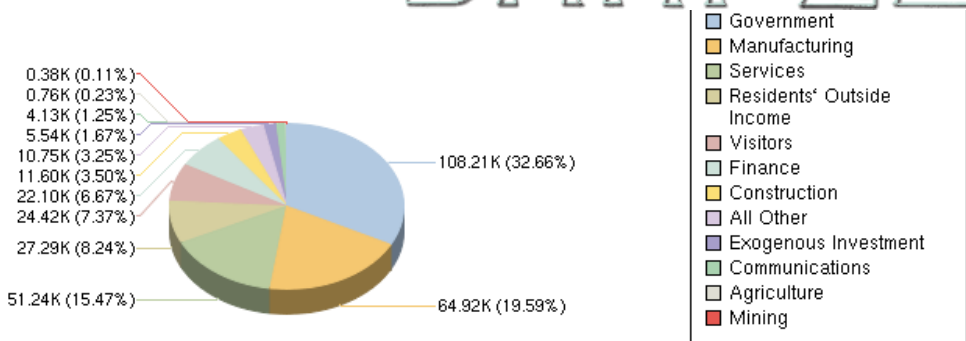
Economic base analysis uses a model of the region’s economy to show which groups of industries are most fundamental; that is, which bring money into a region rather than simply circulating dollars that are already present. The first type of industries is called “basic” while the second type is called “non-basic.” Examples of common basic industries include manufacturing, agriculture and natural resources, and state or federal government enterprises. Basic industries are important because growth or decline in them results in large ripple effects across the economy.

Basic industries generally export products and services to non-regional purchasers. (There are also other ways that a region can bring in money: for example, the income of out-commuters in a bedroom community, or residents’ Social Security benefits from the federal government.) The model calculates how much of each industry’s jobs and earnings rely on its exports, then uses multiplier effects to attribute jobs and earnings from other industries to the original “basic” industry. So Manufacturing might account for only 1,000 direct jobs and \$50m in direct earnings in a region, but as a basic industry it might support an additional 500 indirect jobs and \$20m in indirect earnings throughout the economy.

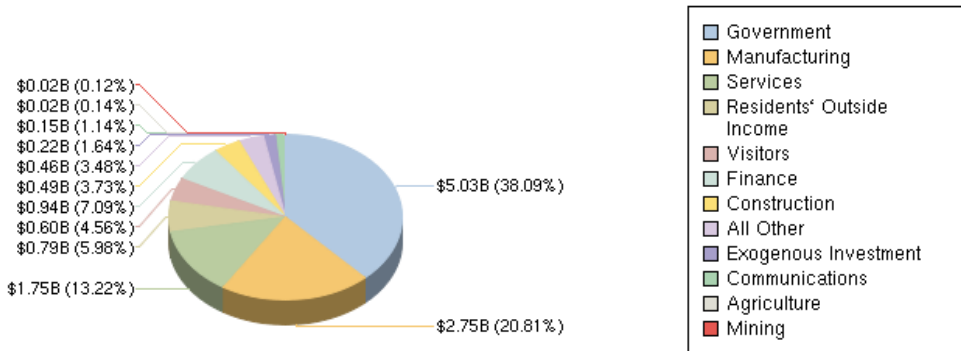
Note that economic base sector names and definitions are different from those used elsewhere in this report.

SAMPLE

Economic Base, Jobs



Economic Base, Earnings



Economic Base Data

Sector	Jobs	Earnings (K)	Jobs (%)	Earnings (%)	EPW (K)
Government	110,298	\$5,030,224	33%	38%	\$46
Manufacturing	65,952	\$2,736,351	20%	21%	\$41
Services	51,853	\$1,725,672	15%	13%	\$33
Residents' Outside Incomes	27,721	\$784,904	8%	6%	\$28
Visitors	25,259	\$604,173	7%	5%	\$24
Finance	22,629	\$937,318	7%	7%	\$41
Construction	11,918	\$493,405	4%	4%	\$41
All Other	10,911	\$453,648	3%	3%	\$42
Exogenous Investment	5,658	\$216,017	2%	2%	\$38
Communications	4,255	\$151,072	1%	1%	\$36
Agriculture	701	\$17,628	0%	0%	\$25
Mining	383	\$16,412	0%	0%	\$43

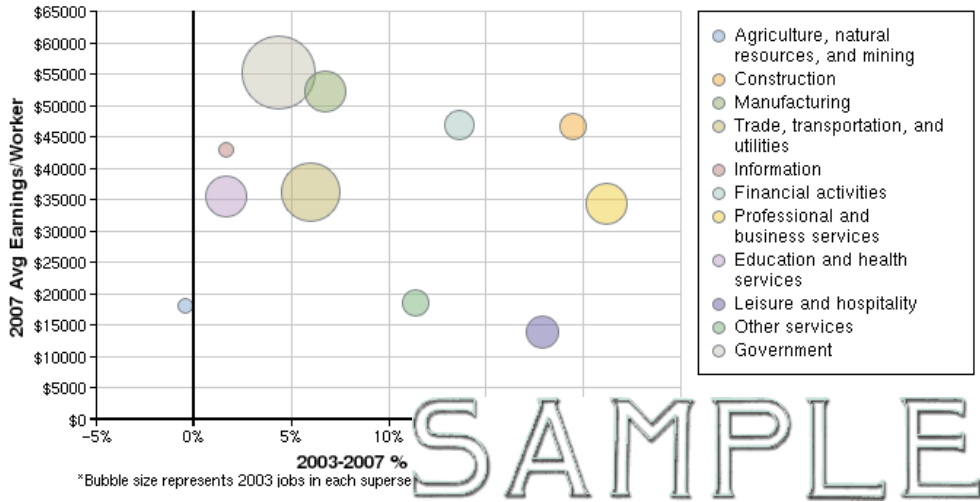
Source: EMSI Complete Employment, Spring 2008, Release v. 2; EMSI Economic Input / Output Model

"Jobs": Total direct and indirect jobs dependent on each sector as a basic industry. **"Earnings"**: Total direct and indirect earnings dependent on each sector as a basic industry, in thousands of dollars. **"EPW"**: Annual average earnings per worker for all jobs and earnings dependent on each sector, in thousands of dollars. **"Residents' Outside Income"**: Includes investment dividends, interest, royalties, rents, transfer payments, and other forms of income gained from outside the region itself.

SAMPLE

INDUSTRY OVERVIEW, 2003-2012

Recent Industry Trends, 2003-2007

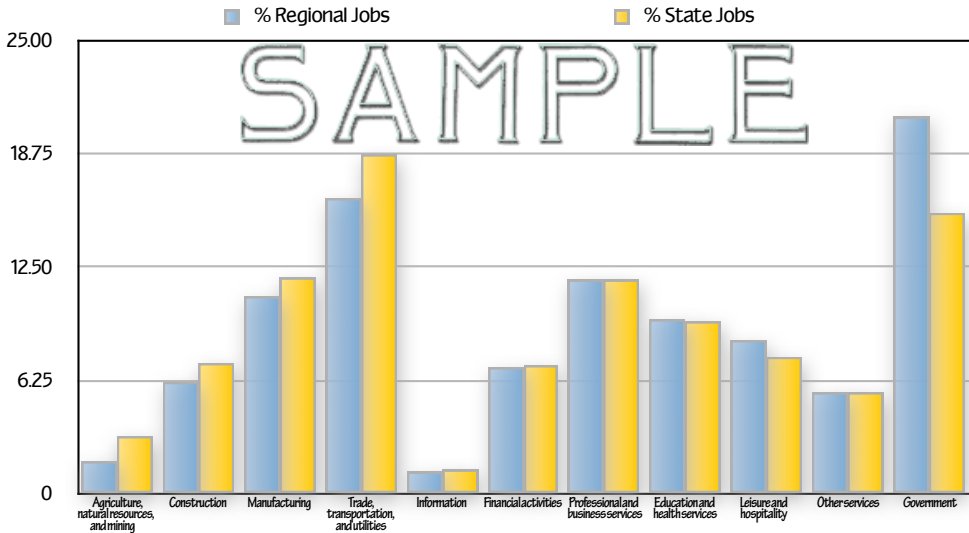


Description	2003 Jobs	2007 Jobs	Growth	% Growth	2007 EPW
Agriculture, natural resources, and mining	6,036	6,011	(25)	0%	\$18,223
Construction	17,089	20,421	3,332	19%	\$46,672
Manufacturing	33,714	36,000	2,286	7%	\$52,135
Trade, transportation, and utilities	51,125	54,187	3,062	6%	\$36,155
Information	4,146	4,215	69	2%	\$42,901
Financial activities	20,426	23,207	2,780	14%	\$46,879
Professional and business services	32,633	39,538	6,905	21%	\$34,373
Education and health services	31,548	32,069	521	2%	\$35,403
Leisure and hospitality	23,919	28,202	4,283	18%	\$13,985
Other services	16,564	18,454	1,891	11%	\$18,584
Government	66,145	69,031	2,866	4%	\$55,220
	303,345	331,334	27,989	9%	

EPW: Average earnings per worker, inclusive of benefits and other non-wage/salary compensation.
 Source: EMSI Complete Employment, Spring 2008, Release v. 2

Industry Composition, 2007

2007 Industry Supersectors



Description	2003 Regional Jobs	% Regional Jobs	2003 State Jobs	% State Jobs	2007 Regional Jobs	% Regional Jobs	2007 State Jobs	% State Jobs
Agriculture, natural resources, and mining	6,036	2%	78,841	3.3%	6,011	1.8%	81,626	3.2%
Construction	17,089	5.6%	156,282	6.6%	20,421	6.2%	187,528	7.3%
Manufacturing	33,714	11.1%	300,099	12.7%	36,000	10.9%	310,721	12.0%
Trade, transportation, and utilities	51,125	16.9%	451,552	19.1%	54,187	16.4%	484,725	18.8%
Information	4,146	1.4%	36,016	1.5%	4,215	1.3%	34,933	1.4%
Financial activities	20,426	6.7%	158,320	6.7%	23,207	7.0%	183,126	7.1%
Professional and business services	32,633	10.8%	263,939	11.2%	39,538	11.9%	308,452	11.9%
Education and health services	31,548	10.4%	222,604	9.4%	32,069	9.7%	246,886	9.6%
Leisure and hospitality	23,919	7.9%	174,708	7.4%	28,202	8.5%	195,917	7.6%
Other services	16,564	5.5%	132,087	5.6%	18,454	5.6%	147,448	5.7%
Government	66,145	21.8%	383,666	16.3%	69,031	20.8%	401,999	15.6%

Source: EMSI Complete Employment, Spring 2008, Release v. 2

Unemployment by Industry Sector

(October 2007)

Description	2007 Jobs	October Unemploy.	% Total Jobs	State %	National %
Farming, fishing, and forestry occupations	1,168	106	9.1%	7.8%	44.7%
Transportation and material moving occupations	22,163	1,908	8.6%	7.8%	5.3%
Construction and extraction occupations	16,898	1,109	6.6%	5.5%	10.3%
Building and grounds cleaning and maintenance occupations	15,636	1,019	6.5%	6%	8.8%
Food preparation and serving related occupations	23,264	1,061	4.6%	4.4%	4.9%
Healthcare support occupations	7,590	314	4.1%	3.7%	3.7%
Protective service occupations	7,681	297	3.9%	4%	4.9%
Office and administrative support occupations	48,130	1,811	3.8%	3.6%	3.5%
Production occupations	28,920	1,050	3.6%	3%	6%
Sales and related occupations	38,522	1,281	3.3%	3.1%	3.8%
Installation, maintenance, and repair occupations	13,601	345	2.5%	2.3%	4%
Management occupations	20,876	513	2.5%	2.2%	2.5%
Life, physical, and social science occupations	2,143	51	2.4%	2.3%	2.4%
Arts, design, entertainment, sports, and media occupations	6,200	138	2.2%	2%	2.6%
Personal care and service occupations	9,915	198	2%	1.9%	3.9%
Community and social services occupations	4,779	91	1.9%	1.8%	2.2%
Architecture and engineering occupations	4,168	70	1.7%	1.3%	2.1%
Education, training, and library occupations	19,062	299	1.6%	1.6%	1.3%
Healthcare practitioners and technical occupations	14,126	170	1.2%	1%	1%
Business and financial operations occupations	12,253	144	1.2%	1.2%	1.6%
Military Occupations	7,227	26	0.4%	0.4%	1.4%
Not elsewhere	0	1,287	0%	0%	0%
	331,334	13,390	4.0%		

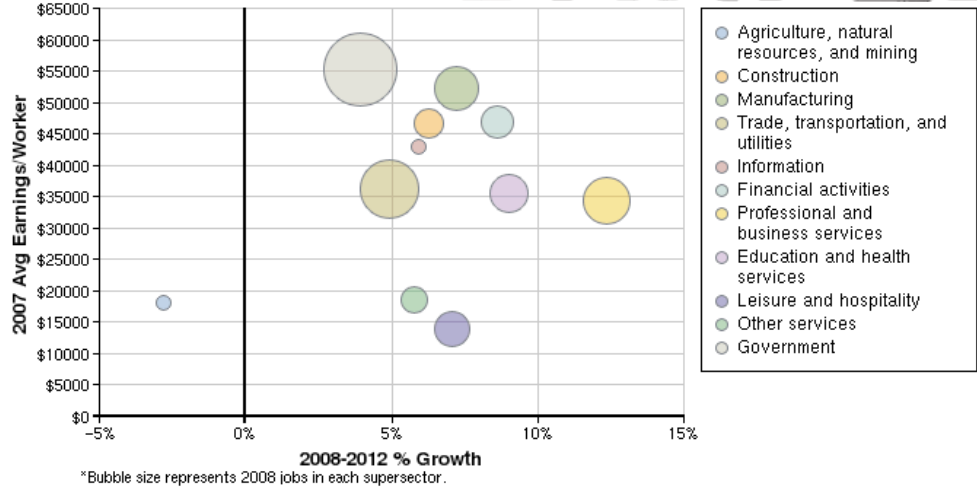
Note: Sectors with fewer than 10 unemployed workers are not shown.

Sources: U.S. Dept. of Labor, Local Area Unemployment Statistics; EMSI Complete Employment.

SAMPLE

Industry Forecast, 2008-2012

SAMPLE

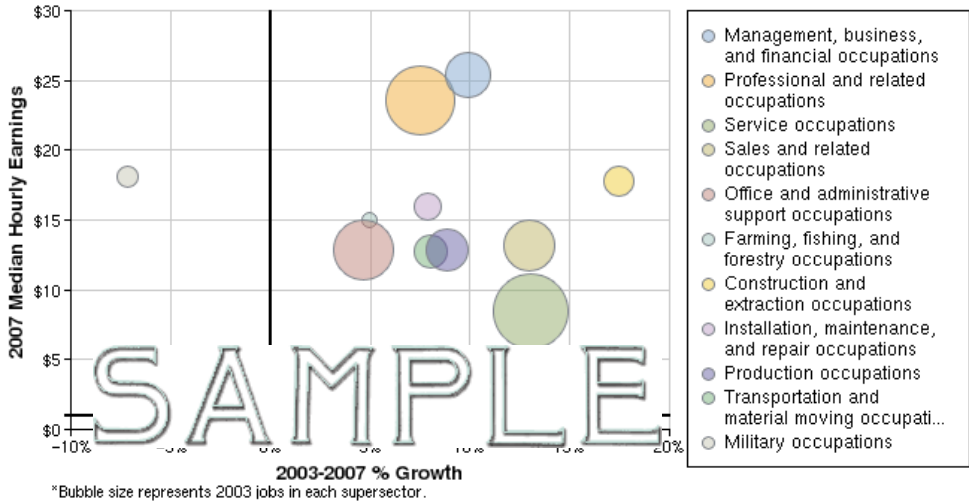


Description	2008 Jobs	2012 Jobs	Growth	% Growth	2007 EPW
Agriculture, natural resources, and mining	5,922	5,755	(167)	(3%)	\$18,223
Construction	20,926	22,236	1,310	6%	\$46,672
Manufacturing	36,674	39,321	2,647	7%	\$52,135
Trade, transportation, and utilities	55,028	57,750	2,722	5%	\$36,155
Information	4,287	4,542	255	6%	\$42,901
Financial activities	24,034	26,110	2,076	9%	\$46,879
Professional and business services	41,512	46,639	5,127	12%	\$34,373
Education and health services	33,000	35,984	2,983	9%	\$35,403
Leisure and hospitality	29,072	31,131	2,058	7%	\$13,985
Other services	18,875	19,966	1,091	6%	\$18,584
Government	70,130	72,877	2,747	4%	\$55,220
	339,461	362,311	22,851	7%	

EPW: Average earnings per worker, inclusive of benefits and other non-wage/salary compensation.
 Source: EMSI Complete Employment, Spring 2008, Release v.2

WORKFORCE OVERVIEW, 2003-2012

Recent Workforce Trends, 2003-2007

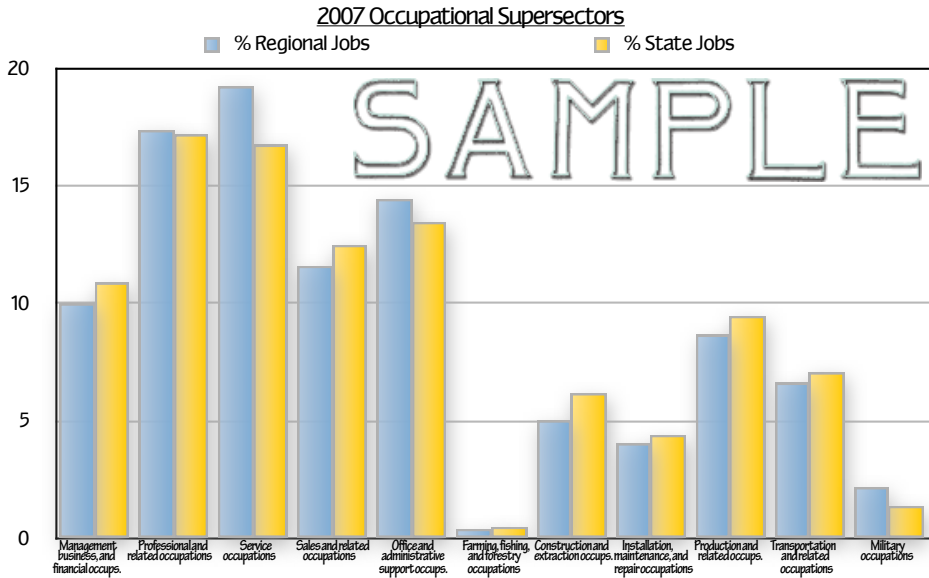


Description	2003 Jobs	2007 Jobs	Growth	% Growth	2007 Median Hourly Earnings
Management, business, and financial operations	30,144	33,129	2,985	10%	\$25.43
Professional and related occupations	53,491	57,490	3,999	7%	\$23.56
Service occupations	56,677	64,086	7,409	13%	\$8.50
Sales and related occupations	34,094	38,522	4,428	13%	\$13.50
Office and administrative support occupations	45,971	48,130	2,159	5%	\$12.83
Farming, fishing, and forestry occupations	1,112	1,168	56	5%	\$15.05
Construction and extraction occupations	14,390	16,898	2,508	17%	\$17.84
Installation, maintenance, and repair occupations	12,607	13,601	993	8%	\$15.99
Production occupations	26,563	28,202	4,283	9%	\$12.88
Transportation and material moving occupations	20,513	22,163	1,891	8%	\$12.77
Military occupations*	7,782	7,227	(555)	(7%)	\$18.06
	303,345	331,334	27,989	9%	

Source: EMSI Complete Employment - Spring 2008 Release v.2

*Note: The employment data for military occupations shown above does not reflect changes due to BRAC 2005.

Workforce Composition, 2007



Description	2003 Regional Jobs	2003 % Regional Jobs	2003 State Jobs	2003 % State Jobs	2007 Regional Jobs	2007 % Regional Jobs	2007 State Jobs	2007 % State Jobs
Management, business, and financial operations	30,144	9.9%	256,383	10.9%	33,129	10.0%	282,694	10.9%
Professional and related occupations	53,491	17.6%	408,733	17.3%	57,490	17.4%	443,867	17.2%
Service occupations	56,677	18.7%	385,007	16.3%	64,086	19.3%	433,307	16.8%
Sales and related occupations	34,094	11.2%	289,338	12.3%	38,522	11.6%	322,947	12.5%
Office and administrative support occupations	45,971	15.2%	331,358	14.1%	48,130	14.5%	347,942	13.5%
Farming, fishing, and forestry occupations	1,112	0.4%	12,266	0.5%	1,168	0.4%	13,479	0.5%
Construction and extraction occupations	14,390	4.7%	135,119	5.7%	16,898	5.1%	159,275	6.2%
Installation, maintenance, and repair occupations	12,607	4.2%	104,212	4.4%	13,601	4.1%	113,461	4.4%
Production occupations	26,563	8.8%	230,980	9.8%	28,920	8.7%	244,993	9.5%
Transportation and material moving occupations	20,513	6.8%	168,126	7.1%	22,163	6.7%	183,991	7.1%
Military*	7,782	2.6%	36,586	1.6%	7,227	2.2%	37,404	1.4%

Source: EMSI Complete Employment - Spring 2008 Release v.2
 *Note: The employment data for military occupations shown above does not reflect changes due to BRAC 2005.

Unemployment by Occupation Group

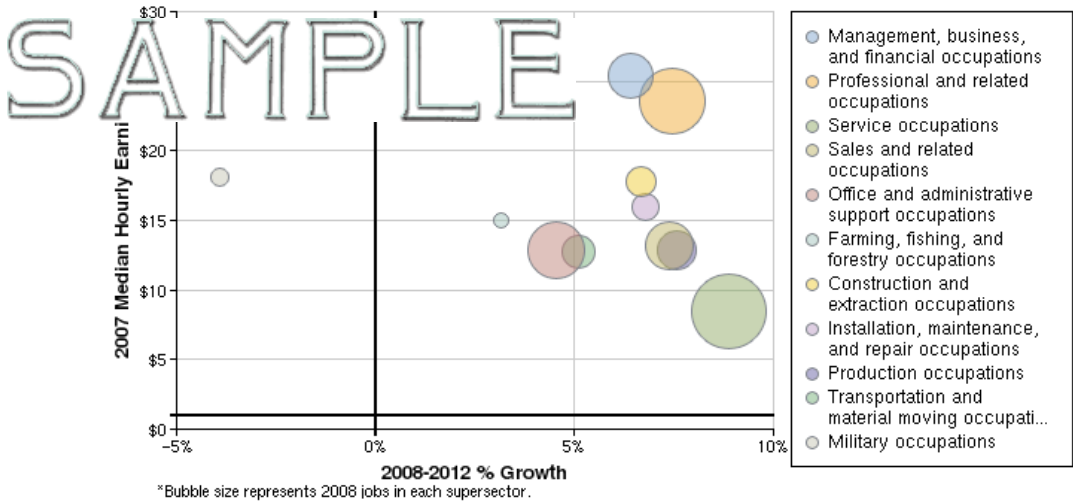
(October 2007)

Description	2007 Jobs	October Unemploy.	% Total Jobs	State %	National %
Farming, fishing, and forestry occupations	1,168	106	9.1%	7.8%	44.7%
Transportation and material moving occupations	22,163	1,908	8.6%	7.8%	5.3%
Construction and extraction occupations	16,898	1,109	6.6%	5.5%	10.3%
Building and grounds cleaning and maintenance occupations	15,636	1,019	6.5%	6%	8.8%
Food preparation and serving related occupations	23,264	1,061	4.6%	4.4%	4.9%
Healthcare support occupations	7,590	314	4.1%	3.7%	3.7%
Protective service occupations	7,681	297	3.9%	4%	4.9%
Office and administrative support occupations	48,130	1,811	3.8%	3.6%	3.5%
Production occupations	28,920	1,050	3.6%	3%	6%
Sales and related occupations	38,522	1,281	3.3%	3.1%	3.8%
Installation, maintenance, and repair occupations				.3%	4%
Management occupations				.2%	2.5%
Life, physical, and social science occupations	2,143	51	2.4%	2.3%	2.4%
Arts, design, entertainment, sports, and media occupations	6,200	138	2.2%	2%	2.6%
Personal care and service occupations	9,915	198	2%	1.9%	3.9%
Community and social services occupations	4,779	91	1.9%	1.8%	2.2%
Architecture and engineering occupations	4,168	70	1.7%	1.3%	2.1%
Education, training, and library occupations	19,062	299	1.6%	1.6%	1.3%
Healthcare practitioners and technical occupations	14,126	170	1.2%	1%	1%
Business and financial operations occupations	12,253	144	1.2%	1.2%	1.6%
Military Occupations	7,227	26	0.4%	0.4%	1.4%
Not elsewhere	0	1,287	0%	0%	0%
	331,334	13,390	4.0%		

Note: Sectors with fewer than 10 unemployed workers are not shown.

Sources: U.S. Dept. of Labor, Local Area Unemployment Statistics; EMSI Complete Employment.

Workforce Forecast, 2008-2012



Description	2008 Jobs	2012 Jobs	Growth	% Growth	2007 Median Hourly Earnings
Management, business, and financial operations	33,932	36,101	2,169	6%	\$25.43
Professional and related occupations	58,984	63,391	4,408	7%	\$23.56
Service occupations	66,314	72,202	5,888	9%	\$8.50
Sales and related occupations	39,609	42,527	2,917	7%	\$13.50
Office and administrative support occupations	49,045	51,270	2,225	5%	\$12.83
Farming, fishing, and forestry occupations	1,169	1,206	37	3%	\$15.05
Construction and extraction occupations	17,328	18,483	1,155	7%	\$17.84
Installation, maintenance, and repair occupations	13,897	14,840	942	7%	\$15.99
Production occupations	29,519	31,753	2,234	8%	\$12.88
Transportation and material moving occupations	22,547	23,699	1,153	5%	\$12.77
Military occupations	7,116	6,839	(277)	(4%)	\$18.06
	339,460	362,311	22,851	7%	

Source: EMSI Complete Employment - Spring 2008 Release v.2

HUMAN CAPITAL OVERVIEW, 2007

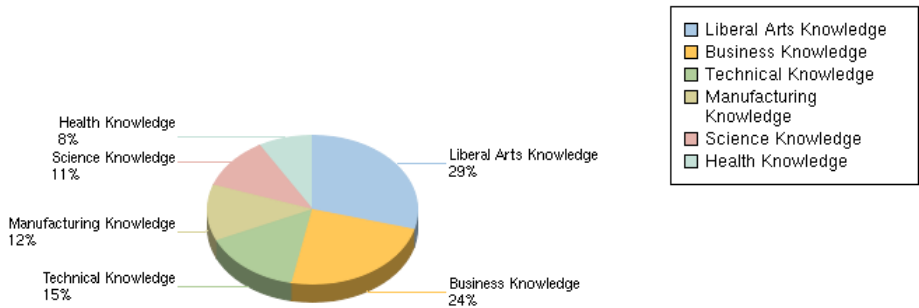
Introduction

Using EMSI workforce data (employment by occupation) and occupational competency profiles published by the U.S. Department of Labor's O*Net initiative, ECDI can provide quantified levels of knowledge and skills for communities and regions throughout Alabama.

Knowledge Summary

Knowledge Area Breakdown

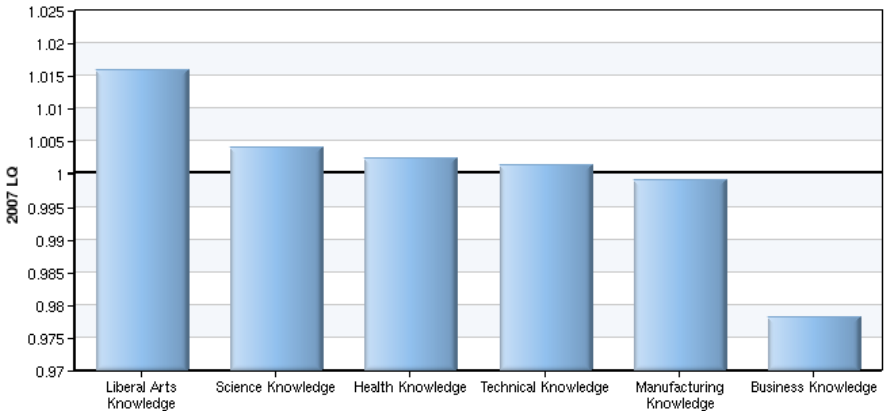
The following chart illustrates the share of each knowledge area as a percentage of total occupational knowledge in the region.



SAMPLE

Knowledge Concentrations

The following chart shows location quotients (LQs) of regional knowledge areas - the regional level of each knowledge area divided by the national average. This shows regional specialization. An LQ of 1.0 is average.

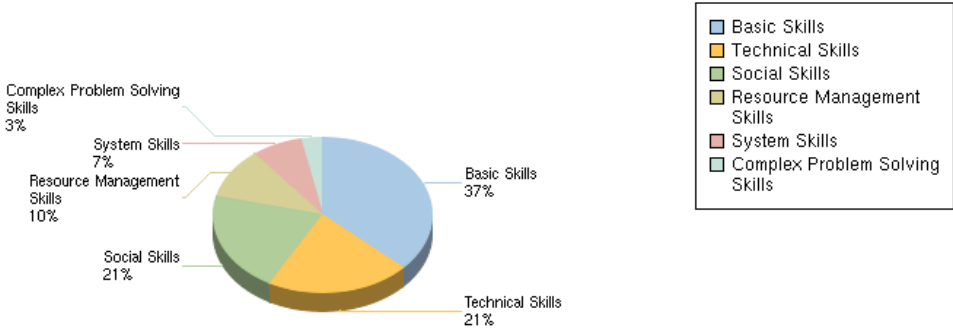


Skills Summary

SAMPLE

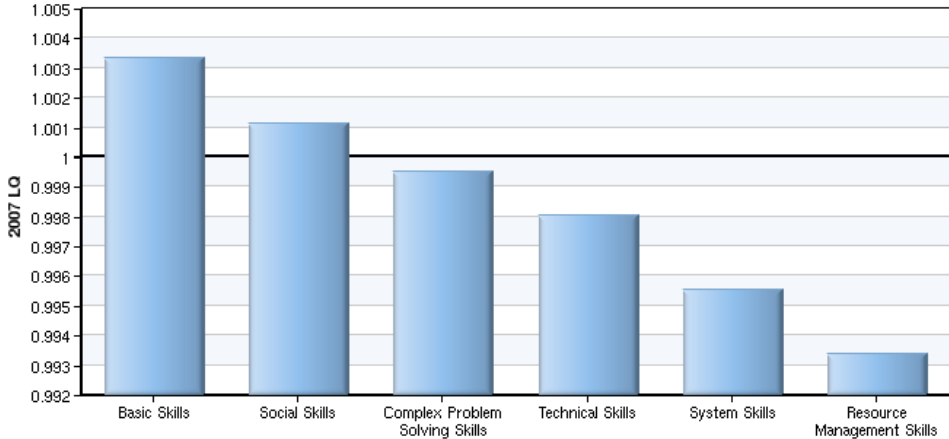
Skill Area Breakdown

The following chart illustrates the share of each skill area as a percentage of total occupational skills in the region.



Skills Concentrations

The following chart shows location quotients (LQs) of regional skill areas - the regional level of each skill area divided by the national average. This shows regional specialization. An LQ of 1.0 is average.



Abilities Summary

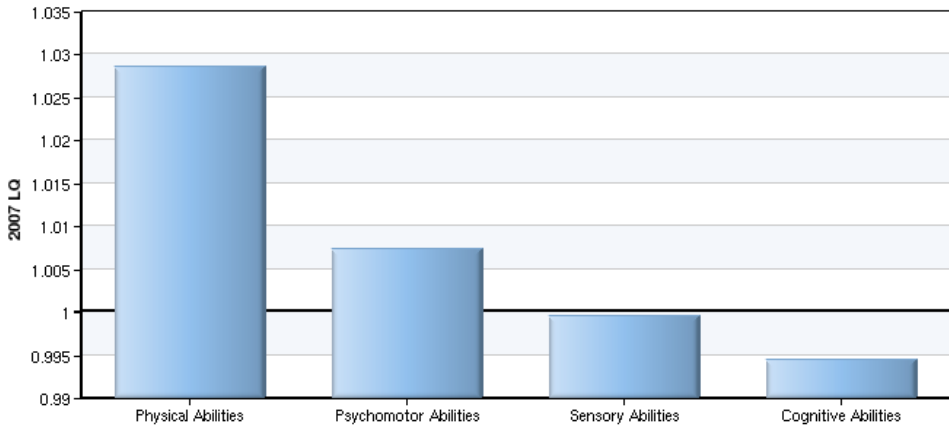
Abilities Area Breakdown

The following chart illustrates the share of each ability area as a percentage of total occupational abilities in the region.



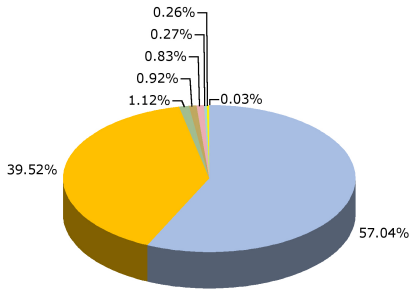
Abilities Concentrations

The following chart shows location quotients (LQs) of regional ability areas - the regional level of each ability area divided by the national average. This shows regional specialization. An LQ of 1.0 is average.



DEMOGRAPHICS OVERVIEW, 2003-2012

Race / Ethnicity Profile and Recent Trends, 2003-2007

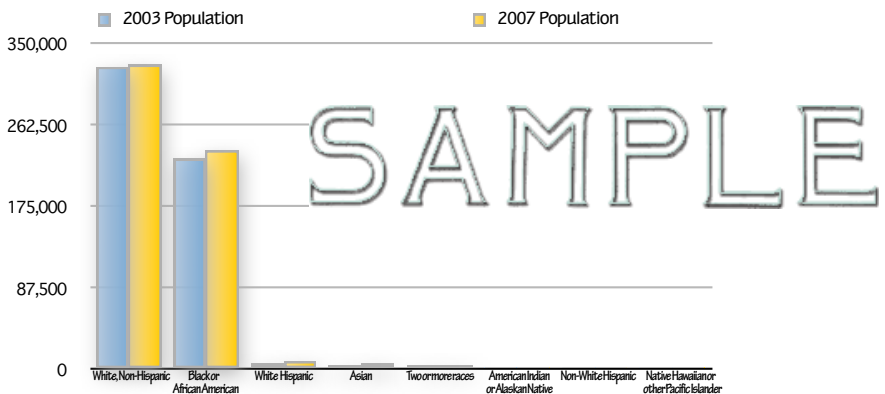


- White, Non-Hispanic
- Black or African American
- White, Hispanic
- Asian
- Two or more races
- American Indian or Alaskan Native
- Non-White Hispanic
- Native Hawaiian and other Pac. Islander

Race / Ethnicity	2003 Population	% of Total
White, Non-Hispanic	325,700	57.04%
Black or African American	225,681	39.52%
White, Hispanic	6,400	1.12%
Asian	5,276	0.92%
Two or more races	4,763	0.83%
American Indian or Alaska Native	1,548	0.27%
Non-White Hispanic	1,466	0.26%
Native Hawaiian and other Pac. Islander	149	0.03%

Race/ Ethnicity	2003 Population	2007 Population	Change	% Change
White, Non-Hispanic	325,700	326,466	766	0%
Black or African American	225,681	235,565	9,884	4%
White, Hispanic	6,400	8,488	2,088	33%
Asian	5,276	6,448	1,172	22%
Two or more races	4,763	5,424	661	14%
American Indian or Alaska Native	1,548	1,549	1	0%
Non-White Hispanic	1,466	1,489	23	2%
Native Hawaiian and other Pacific Islander	149	157	8	5%
	570,983	585,586	14,603	10%

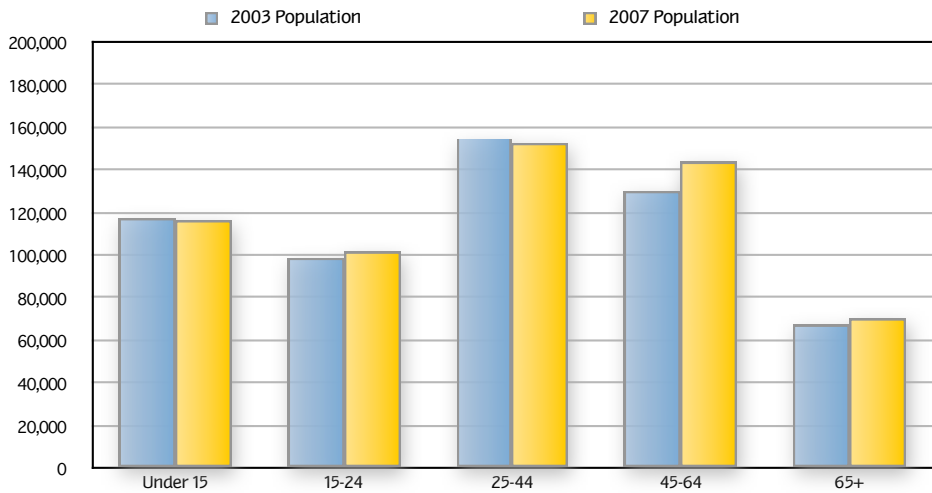
Source: EMSI Complete Employment - Spring 2008 Release v.2



Age Profile and Recent Trends, 2003-2007

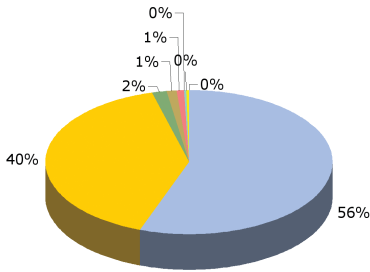
Age	2003 Population	2007 Population	Change	% Change
Under 15	117,193	116,427	(765)	(1%)
15-24	99,346	101,545	2,199	2%
25-44	156,321	152,598	(3,723)	(2%)
45-64	130,333	144,304	13,971	11%
65+	67,790	70,713	2,923	4%
	570,983	585,587	14,604	3%

Source: EMSI Complete Employment - Spring 2008 Release v.2



SAMPLE

Projected Race / Ethnicity Profile, 2008-2012

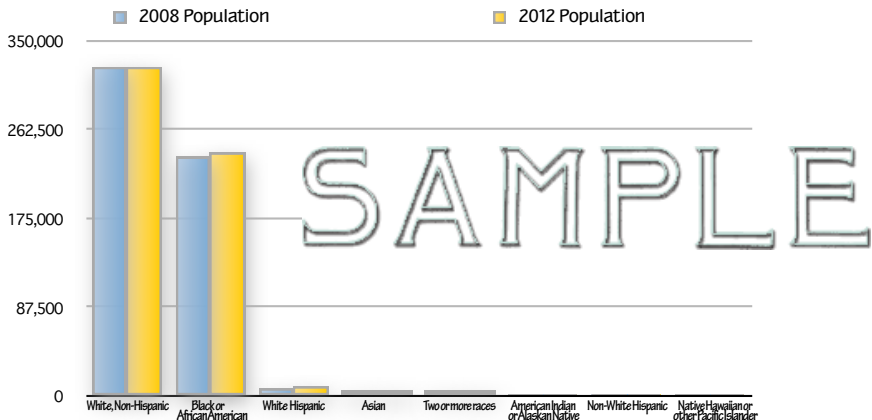


- White, Non-Hispanic
- Black or African American
- White, Hispanic
- Asian
- Two or more races
- American Indian or Alaskan Native
- Non-White Hispanic
- Native Hawaiian and other Pac. Islander

Race / Ethnicity	2008 Population	% of Total
White, Non-Hispanic	326,040	55.50%
Black or African American	237,195	40.38%
White, Hispanic	8,836	1.50%
Asian	6,635	1.13%
Two or more races	5,560	0.95%
American Indian or Alaska Native	1,549	0.26%
Non-White Hispanic	1,490	0.25%
Native Hawaiian and other Pac. Islander	157	0.03%

Race/ Ethnicity	2008 Population	2012 Population	Change	% Change
White, Non-Hispanic	326,040	324,432	(1,608)	0%
Black or African American	237,195	241,541	4,346	2%
White, Hispanic	8,836	9,842	1,006	11%
Asian	6,635	7,203	568	9%
Two or more races	5,560	5,955	395	7%
American Indian or Alaska Native	1,549	1,548	(1)	0%
Non-White Hispanic	1,490	1,486	(4)	0%
Native Hawaiian and other Pacific Islander	157	157	0	0%
	587,461	592,164	4,702	1%

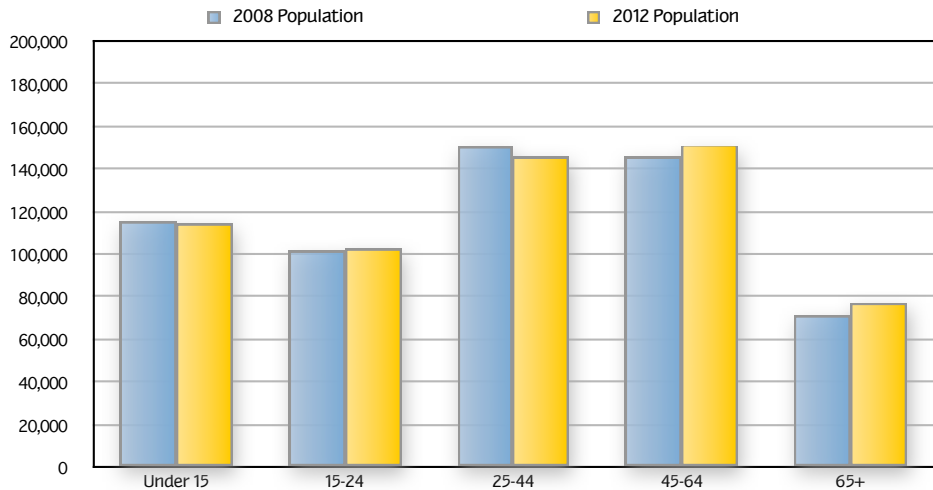
Source: EMSI Complete Employment - Spring 2008 Release v.2



Age Profile and Recent Trends, 2003-2007

Age	2008 Population	2012 Population	Change	% Change
Under 15	115,860	114,324	(1,535)	(1%)
15-24	102,288	102,506	218	0%
25-44	151,092	146,559	(4,533)	(3%)
45-64	146,482	151,631	5,149	4%
65+	71,739	77,144	5,404	8%
	587,461	592,164	4,703	1%

Source: EMSI Complete Employment - Spring 2008 Release v.2



SAMPLE

DATA SOURCES AND METHODOLOGY

Indicators Data

Most indicators data are taken directly from the cited sources with little or no processing by EMSI. Where noted, the original sources may be combined with EMSI databases to produce more complete or useful numbers. For example, indicators that include a number “per 1000 people” use EMSI Demographic Data.

For example, EMSI’s educational attainment numbers are based on Census 1990, Census 2000, the Current Population Survey, and EMSI’s demographic data. By combining these sources, EMSI interpolates for missing years and projects data at the county level. Educational attainment data cover only the population aged 25 years or more and indicate the highest level achieved.

High school graduation data are created by EMSI using the U.S. Department of Education’s National Center for Education Statistics in combination with EMSI’s demographic data to estimate private school graduations and interpolate missing data.

Industry Data

In order to capture a comprehensive picture of regional industry employment (EMSI Complete Employment), EMSI basically combines unsuppressed covered employment data from Quarterly Census of Employment and Wages (QCEW) produced by the Department of Labor with total employment data in the Regional Economic Information System published by the Bureau of Economic Analysis, augmented with County Business Patterns and Nonemployer Statistics published by the U.S. Census Bureau. Projections are based on the latest available EMSI industry data combined with past trends in each industry and the industry growth rates in national projections (Bureau of Labor Statistics) and state-level projections (individual state agencies). Unemployment data are based on the Bureau of Labor Statistics’ Local Area Unemployment Statistics program.

EMSI also provides a more limited industry and occupation data set, EMSI Covered Employment, which is an unsuppressed version of QCEW.

Occupation Data

EMSI’s occupation data are based on EMSI’s industry data and regional occupational statistics and staffing patterns taken from the Occupational Employment Statistics program (U.S. Bureau of Labor Statistics). Additional wage information is derived from the American Community Survey, and wages are adjusted and interpolated at the county and ZIP code level using EMSI earnings data from relevant industries.

Human Capital Data

EMSI quantifies human capital using employment by occupation (EMSI Complete Employment) and data from the Department of Labor’s O*NET initiative.

Demographic Data

EMSI’s proprietary population data and projections are based on several sources, including the 1990 and 2000 Census, U.S. Census Bureau annual county-level estimates, localized fertility/mortality rates by race/ethnicity and gender from the U.S. Health Department, and projected regional job growth estimated from state and national employment projections (on the assumption that people will follow jobs).