

INFRASTRUCTURE AND UTILITIES



Energy Utilities

162



Rural Utilities

163



Telecommunications

164



Transportation

165



ENERGY

Please refer to the “Energy Utilities” section earlier in the directory.

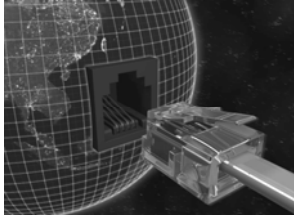


RURAL UTILITIES

USDA RURAL DEVELOPMENT ALABAMA STATE OFFICE

Please find the resource entry for USDA Rural Development under “Funding and Financing”. Guaranteed Loans, Direct Loans and Grants are available. Funds are available in the form of guaranteed loans through a local lender, and direct loans and grants directly from the U.S. Treasury. □ □
USDA Rural Utilities Service: <http://www.usda.gov/rus/>

- Water and Waste Disposal Loans and Grants: Funds are available to public bodies and nonprofit corporations to develop water and waste disposal systems, including solid waste disposal and storm drainage, in rural areas and towns with a population not in excess of 10,000. Qualifying applicants must be unable to obtain the financing from other sources and/or their own resources at rates and terms they can afford.
- Distance Learning and Telemedicine Program (DLT): This program is designed specifically to meet the educational and health care needs of rural America. Through loans, grants, and loan and grant combinations, advanced telecommunications technologies provide enhanced learning and health care opportunities for rural residents. The program asks applicants to define the educational or health care problems that face their communities and determine how Federal distance learning or telemedicine assistance can help. Distance Learning and Telemedicine funds are available to an incorporated organization, partnership Indian Tribe, and tribal organization, consortium, or other legal entity, (1) which operates or will operate a school, college, university, learning center, training facility, or other educational institution or (2) which is providing or proposes to provide telemedicine service or distance learning service to other legal entities.
- Technical Assistance and Training Grants: These grants are made to nonprofit organizations to provide technical assistance and/or training to associations located in rural areas and to cities and towns with a population of 10,000 or less. Assistance may be provided to identify and evaluate solutions to water and waste disposal problems, to improve the operation and maintenance of existing water and waste disposal facilities, and to assist associations in preparing applications for water and waste disposal facilities.
- Solid Waste Management Grants: Grants are made to public and private nonprofit organizations to provide technical assistance and/or training to associations located in rural areas and to cities and towns with a population of 10,000 or less to reduce or eliminate pollution of water resources, and to improve planning and management of solid waste facilities. Assistance may be provided to enhance operator skills in operations and maintenance, identify threats to water resources, and reduce the solid waste stream.



TELECOMMUNICATIONS

AT&T

Michael P. Harbin
Director, Alabama External Affairs
600 North 19th St., 28th Floor
Birmingham, AL 35203

Phone: (205) 714-0523
E-mail: michael.harbin@att.com
Web Site: <http://www.bellsouth.com>

OVERVIEW

AT&T has 7,500 workers in the state of Alabama, with about 4,200 of those in the Birmingham area. It is Alabama's biggest provider of landline telephone services and a major wireless carrier in the state. In the summer of 2008, the company was setting up a technical support call center with 376 jobs in Birmingham and taking steps to roll out its U-verse Internet-based video service in parts of the metro area. U-verse is a service offering video, telephone, online access and other services the company provides over Internet Protocol technology.

One of AT&T's strengths is its community ties. The company works to strengthen these ties by working throughout the state within communities, local governments and school systems.



AIR

AUBURN-OPELIKA ROBERT G. PITTS AIRPORT

William T. (“Bill”) Hutto
Director
700 Airport Road
Auburn, Alabama 36830

Phone: (334) 844-4597
E-mail: info@auoairport.com
Web: <http://www.auoairport.com>

PURPOSE

The Auburn-Opelika Robert G. Pitts Airport is a public use facility serving the local community that is owned and maintained by Auburn University offering excellent customer service, quality performance and efficient facilities.

PROGRAMS AND SERVICES

Air Transportation is available to Auburn University faculty, staff, and official guests 365 days a year. Since the inception of Air Transportation Services some 41 years ago, they have covered over 10 million passenger miles.

According to a recent study by Wilbur Smith Associates, the Auburn-Opelika Robert G. Pitts Airport is responsible for \$19.34 million in annual economic activity.

The airport is located two miles east of Auburn, Alabama, in Lee County. It lies approximately three miles west of Interstate 85 near U.S. Highway 280/431. The Auburn-Opelika/Robert G. Pitts Airport has two runways: Runway 18/36 is 5,265 feet in length and Runway 10/28 is 4,002 feet in length. The airport property, encompassing 423 acres, straddles the boundary between the cities of Auburn and Opelika. The airport, with 47 based aircraft, experiences approximately 47,800 aircraft operations annually.

Owned and maintained by Auburn University, the airport provides a robust flight education program, which has approximately 200 student pilots enrolled. The airport also holds intercollegiate flying meets for Auburn University. Aviation activities that take place on a regular basis at the airport include recreational flying and corporate travel. Other activities that take place less frequently at the airport include law enforcement, emergency medical evacuation, medical shipments/patient transfer, and aerial advertising. In addition, aerial utility inspections and community events take place on the airport.

The airport plays a significant role in attracting people to the area for conferences, college visits, and NCAA sporting events. The airport provides the community with public and private tours of its facilities. A picnic area is located adjacent to the airport.

BIRMINGHAM INTERNATIONAL AIRPORT

Al Denson
Executive Director
Birmingham Airport Authority
5900 Airport Highway
Birmingham, AL 35212

Phone: (205) 595-0533
E-mail: info@flybirmingham.com
Web: <http://www.flybirmingham.com>

MISSION

Birmingham International Airport is Alabama's largest airport serving the Greater Birmingham area and surrounding Southeastern cities. Offering more than 160 arrivals and departures daily to major cities throughout the United States, Birmingham International presently ranks in the country's top 75 airports in terms of passengers served annually, and is expected to serve more than 3 million travelers this year.

PROGRAMS AND SERVICES

The Birmingham Airport Authority is committed to building lasting community relationships. The Authority recognizes that to accomplish our goals we must consider and address the needs of its local communities, city and region. The on-going effort to be a responsible member of its community and friend to our neighbors remains a top priority of the Birmingham Airport Authority.

COLUMBUS GEORGIA AIRPORT AUTHORITY

Mark Oropeza
Airport Director
3250 W. Britt David Road
Columbus, Georgia 31909-5399

Phone: (706) 324-2449
E-mail: morepeza@flycolumbusga.com
Web: <http://www.flycolumbusga.com>

MISSION

The Columbus Georgia Airport Authority primarily offers connector services to Hartsfield International Airport.

PROGRAMS AND SERVICES

The airline serving the Columbus Metropolitan Airport provides connections to cities throughout the United States as well as access to international travel. Delta Connection/ASA offers flights daily with connections to Atlanta Hartsfield International Airport.

Other services offered by the airport include:

- Car Rental (Avis, Budget, Hertz, Enterprise and National)
- Gift Shop
- Dining (Propeller's Restaurant)
- Meeting Facilities
- Private Aviation
- Commercial Aviation
- Corporate Aviation
- Flight Lessons

DOTHAN REGIONAL AIRPORT

Angela McNeal
Marketing Director
Airport Administration
800 Airport Drive, Suite 15
Dothan, AL 36303

Phone: (334) 983-8100
E-mail: amcneal@flydothan.com
Web: <http://www.flydothan.com/>

MISSION

It is the goal of the Dothan Houston County Airport Authority to provide the type of air transportation service most desired by the citizens of the area.

PROGRAMS AND SERVICES

The services available to the public from the airport tenants cover a wide spectrum, including:

- *Airspeed Executive Terminal* is a full service Fixed Base Operator providing charter, maintenance, repair, Part 141 flight training and other services for privately owned aircraft and corporate aircraft owners.
- *FlightSafety International* is a Special Fixed Base Operator and provides a wide range of flight instruction services to include multi-engine, rotary wing, turbine, instrument, and simulator work.
- *Aerostar World* is a Special Fixed Based Operator that provides factory level maintenance for Piper Aerostars (one of only three companies in the world to do so) and is the parent company for Flightline of Dothan.
- *Flightline* of Dothan is a full service Fixed Base Operator operating as a Chevron dealer.
- *Pemco World Air Services* provides complete major overhaul and modification of large commercial and military aircraft. Some of Pemco's contracts have included cargo door installations on Boeing 747s, 737s, 727s, and BAe 146s as well as modifications and service for H-3s, DC-9s, L-1011s, MD-11s, Airbus A-300s, A-310s, and A-320s.

MOBILE REGIONAL AIRPORT

Bay Haas
Executive Director
8400 Airport Blvd.
Mobile, AL 36695

Phone: (251) 438-7110
E-mail: bay@mobairport.com
Web: <http://www.mobairport.com>

MISSION

The goal of the Mobile Regional Airport is to make the airport a clean, safe, enjoyable, and relaxing experience for passengers.

PROGRAMS AND SERVICES

Services Include:

- 30 minutes free parking
- Dining and shopping options
- WiFi
- Comfortable rocking chairs
- Fully staffed customer service center
- Private club
- Nation's first airport frequent flyer program

Five airlines serve the Mobile Regional Airport:

- American Eagle
- ASA -A Delta Connection
- Continental Express
- Delta Airlines
- Northwest Airlinck
- U.S. Airways

MONTGOMERY AIRPORT AUTHORITY

Phil Perry
Executive Director
4445 Selma Highway
Montgomery, AL 36108

Phone: (334) 281-5040
E-mail: executive-
director@montgomeryairport.org
Web: <http://www.montgomeryairport.org>

OVERVIEW

The Montgomery Airport Authority provides its passengers with four Airline options. See programs and services for more information.

PROGRAMS AND SERVICES

Airport Amenities:

- Phone service, including service for the hearing impaired
- Airport Lounge for individuals age 21 and over
- Automatic Teller Machine (ATM)
- Meeting room availability
- Baggage cart rentals
- Sandwich shop
- Broadband Internet access in the Business Service Center
- Free wireless Internet access in the passenger areas

Airlines Include:

- Delta Connection
- NWA Airlinck
- U.S. Airways Express
- Continental Express

NORTHWEST ALABAMA REGIONAL AIRPORT

John B. Lehrter
Director
1729 T. Ed Campbell Drive, Suite A
Muscle Shoals, Alabama 35661-2016

Phone: (256) 381-2869
E-mail: flymsl@aol.com
Web: <http://www.flytheshoals.com>

MISSION

The mission of the Northwest Alabama Regional Airport is to provide safe, efficient, and attractive facilities and services with a staff committed to the highest standards of customer satisfaction, convenience, and service.

PROGRAMS AND SERVICES

Northwest Alabama Regional Airport programs and services include:

- Commercial Air Service provided by Northwest AirlinK
- Fixed Base Operation provided by the Shoals Flight Center to include:
 - Jet A
 - 100LL
 - 100LL self-serve
 - Hangars/Tie Downs
 - Aircraft maintenance
 - Aircraft detailing
- ASOS
- ARFF-Index A
- Industrial airpark

PORT OF HUNTSVILLE

Rick Tucker
Executive Director
Port of Huntsville
1000 Glenn Hearn Ave.

Box 20008
Huntsville, AL 35824
Phone: (256) 258-1955

Huntsville International Airport

Barbie Peek
Director of Marketing
Phone: (256) 258-1977
barbie@hsvairport.org

International Intermodal Center

Mitch Bradley
Director
Phone: (256) 772-7084
mitch@hsvairport.org

Jetplex Industrial Park

Brooks Kracke
Director
Phone: (256) 258-1998
brooks@hsvairport.org

MISSION

The mission of the Port of Huntsville is to provide multi-modal transportation services to a diverse regional customer base and to stimulate the economic growth and development of the Tennessee Valley Region.

PROGRAMS AND SERVICES

The Port of Huntsville is an inland port that combines three major operating entities created to move people and products efficiently throughout the global marketplace.

- Huntsville International Airport
- International Intermodal Center
- Jetplex Industrial Park



HIGHWAY

ALABAMA DEPARTMENT OF TRANSPORTATION (ALDOT)

Duncan Joseph (Joe) McInnes
Director
1409 Coliseum Boulevard
P.O. Box 303050
Montgomery, Alabama 36130-3050

Phone: (334) 242-6358
E-mail: mcinnesj@dot.state.al.us
Web: <http://www.dot.state.al.us>

MISSION

ALDOT's mission is to provide a safe, efficient, environmentally sound intermodal transportation system for all users, especially the taxpayers of Alabama. ALDOT also facilitates economic and social development and prosperity through the efficient movement of people and goods and to facilitate intermodal connections within Alabama. ALDOT must also demand excellence in transportation and be involved in promoting adequate funding to promote and maintain Alabama's transportation infrastructure.

STRUCTURE

The Department is organized into nine geographic regions called Divisions, with a Central Office located in Montgomery. The Central Office is organized into the Office of the Transportation Director and the Office of the Chief Engineer with Bureaus and Divisions reporting to the Chief Engineer. Additionally, the department has several other boards and committees that operate either within a bureau or as a cooperative effort among several bureaus and/or divisions.

Alabama Service and Assistance Program (A.S.A.P) is a component of an overall Congestion Management Program designed to reduce traffic congestion on the regions interstate system and to improve air quality in the Greater Birmingham Area. To achieve this goal, A.S.A.P service trucks offer a variety of free services to disabled motorist to get them on the road again. A.S.A.P has assisted Alabama drivers, as well as drivers from across the United States, Canada, and many other nations.



RAIL

BNSF RAILWAY

Craig Morgan
Economic Development- AL, AR, FL, LA,
MS, OK, TN

Physical Address

2650 Lou Menk Drive
Fort Worth, TX 76131-2830 Toll Free: 1-800-795-2673
E-mail: craig.morgan@bnsf.com

Mailing Address

P.O. Box 961056
Fort Worth, TX 76161-0056

MISSION

BNSF's economic development mission is to promote the development of the physical infrastructure and institutional capacity to support quality growth on the BNSF Railway franchise and establish BNSF as the recognized state-of-the-art leader-in-class, economic development practice among Class I railroads.

PROGRAMS AND SERVICES

BNSF Serves and Transports the following:

- Coal
- Agricultural Products
- Consumer Products
- Industrial Products

CG RAILWAY, INC.

Kevin M. Wild
Sr. Vice President
CG Railway, Inc
11 N. Water Street, Suite 18290
Mobile, Alabama 36602

Phone: (251) 243.9140
E-mail: wildkm@intship.com
Web: www.cgrailway.com

OVERVIEW

The U.S.-Mexico interline rail-ferry service between the ports of Mobile, Alabama and Coatzacoalcos, Mexico, connects the Midwest and Eastern U.S. with Central and Southern Mexico. The primary service area in the U.S. is east of the Mississippi River and the principal service area in Mexico is the Mexico City region and all points south. The U.S. terminal is located within the Alabama State Docks. The newly constructed double deck terminal is serviced by the Terminal Railroad Alabama State Docks (TASD).

PROGRAMS AND SERVICES

Advantages of the service include:

- Multi-vessel sailings
- Fast transit time (3 days on the water)

- Frequency of every 4 days in port
- Vessel Capacity = 115 railcars
- Seamless interchange with United States and Mexican railroads
- No transloading of cargo
- Competitive rates with flexibility to quote door to door, port to port or other customer preferences
- New entry and exit border points
- Single bill of lading and invoicing.

CSX TRANSPORTATION

Meg Saks
Corporate Headquarters
500 Water Street, 15th Floor
Jacksonville, FL 32202

Phone: (904) 359-3200
E-mail: ServiceStartUp@csx.com
Web: www.csxt.com/index.cfm

MISSION

CSX Transportation's mission is to be the safest, most progressive North American railroad, relentless in the pursuit of customer and employee excellence.

PROGRAMS AND SERVICES

CSX Corporation, based in Jacksonville, Fla., owns companies providing rail, intermodal and rail-to-truck transload services that are among the nation's leading transportation companies, connecting more than 70 river, ocean, and lake ports, as well as more than 200 short-line railroads.

KANSAS CITY SOUTHERN RAIL NETWORK

Avery Grimes
AVP Business Development
Mailing Address:
Kansas City Southern
PO Box 219335
Kansas City, MO 64121-9335
Phone: (816) 983-1735

Physical Address:
Kansas City Southern
427 West 12th Street
Kansas City, MO 64105
E-mail: george.avery.grimes@kcsr.com
Web: <http://www.kcsi.com>

VISION

The Kansas City Southern Rail Network's vision is to be a strong, independent transportation company that consistently delivers exceptional service to its customers, challenging careers to its employees, and increasing value to its shareholders.

PROGRAMS AND SERVICES

- More than 6000 track miles in the United States and Mexico
- Marketing Alliances with CN, BNSF, IC&E, and NS
- Interchange with other railroads at 181 points
- Service to twelve Gulf Ports and one Pacific Ocean Port

- Beaumont, TX
- Corpus Christi, TX
- Houston, TX
- Mobile, AL
- Port Arthur TX
- Lazaro Cadernas,
Mexico
- Veracruz, Mexico
- Brownsville, TX
- Gulfport, MS
- Lake Charles, LA
- New Orleans, LA
- Altamira, Mexico
- Tampico, Mexico

NORFOLK SOUTHERN CORPORATION

CJ Brenner
Associate Vice President
Market Development and Systems
Three Commercial Place
Norfolk, VA 23510-9217

Phone: (757) 629-2729
E-mail: Charlie.Brenner@nscorp.com
Web: <http://www.nscorp.com>

MISSION

Norfolk Southern's mission is to enhance the value of its stockholders' investment over time by providing quality freight transportation services and undertaking any other related businesses in which its resources, particularly its people, give the company an advantage.

PROGRAMS AND SERVICES

Norfolk Southern Corporation is a Norfolk, Virginia based company that controls a major freight railroad, Norfolk Southern Railway Company. The railway: operates approximately 21,200 route miles in 22 eastern states, the District of Columbia and Ontario, Canada; serves all major eastern ports; and connects with rail partners in the West and Canada, linking customers to markets around the world. Norfolk Southern provides comprehensive logistics services and offers the most extensive intermodal network in the East.



WATER

ALABAMA STATE PORT AUTHORITY

Judith Adams
Manager Media Relations & Economic Development

Mailing Address:

P.O. Box 1588
Mobile, AL 36633
Phone: (251) 441-7003
Web: www.asdd.com

Physical Address:

250 North Water Street
Mobile, AL. 36602
E-mail: jadams@asdd.com

OVERVIEW

The Alabama State Port Authority oversees the Port of Mobile. About 375 employees operate, maintain and market these facilities. In 1999, the Port of Mobile was the 14th largest port in the nation in total tonnage. The economic impact to Alabama was over \$3 billion statewide. Tax payments of \$467 million were made from activities in the International Trade sector. And most importantly, the Alabama State Docks support the jobs of more than 118,000 Alabamians.

Alabama State Port Authority Facilities:

- McDuffie Terminals
- Bulk Material Handling Plant
- General Cargo/Intermodal
- Terminal Railway (Theodore Terminals and Mobile Middle Bay Port)
- Marine Liquid Bulk Terminal
- Inland Docks

TENNESSEE TOMBIGBEE WATERWAY DEVELOPMENT AUTHORITY

W. H. "Buck" Borders (Governor's Alternate)
Ft. Payne, AL
Post Office Drawer 671
Columbus, Mississippi 39703

Phone: (662) 328-3286
E-mail: ttw@tenntom.org
Web: <http://www.tenntom.org>

OVERVIEW

The Tenn-Tom Waterway Development Authority is an interstate compact ratified by the U.S. Congress to promote the development of the waterway and its economic and trade potential. The compact consists of the States of AL, KY, MS and TN, and is funded solely by appropriations from the member states. Its membership is limited to the four governors and five gubernatorial appointees from each state. Chairmanship rotates annually among the four governors. The authority is also the waterway's regional sponsor to ensure its funding and to address policies and issues that may deter its development. Inland waterways, like the Tenn-Tom, provide myriad benefits to the Nation's economy and its impacted region.

The deep water ports served by the Tenn-Tom include:

- Biloxi, MS
- Port of Panama City
- Mobile, AL
- Port of Pascagoula
- Port of New Orleans
- Port of Pensacola
- Port of Gulfport