

Alabamans Value the Quality of Life in Their Communities and Prefer Local Governments to Become More Involved in Growth Management and Planning

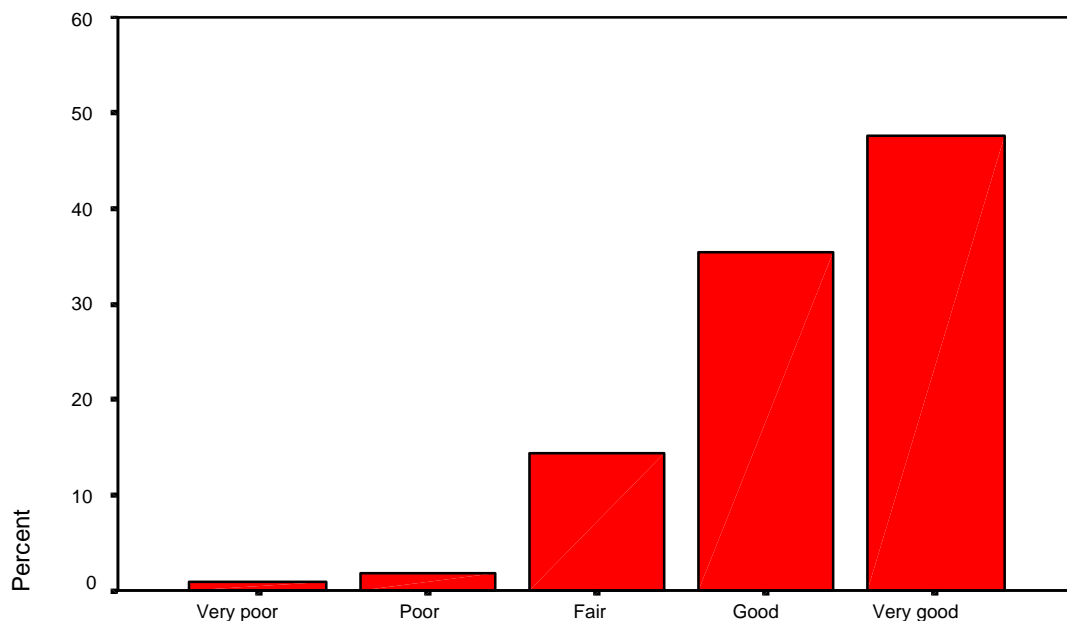
SMART GROWTH SURVEY

Center for Governmental Services
Auburn University, AL 36849
(334) 844-1914

(Auburn, April 29, 2001) The Center for Governmental Services at Auburn University announces the results of a statewide public opinion survey on the perceptions and attitudes of Alabamans towards growth and growth management in their local community. Auburn's survey reveals that Alabamans generally like where they live and; for the most part, believe that managing growth is necessary to maintain their community's quality of life. In addition, the survey results underscore that Alabamans strongly prefer local governments to be involved in growth management decision-making, and that the State government should not be the sole authority

Alabamans tend to be very pleased with the local community where they live. Almost 83% of Alabamans rate their communities as a *good* or *very good* place to live, while less than 4% characterize their community as *poor* or *very poor*.

Alabamans Value Their Community as a Place to Live



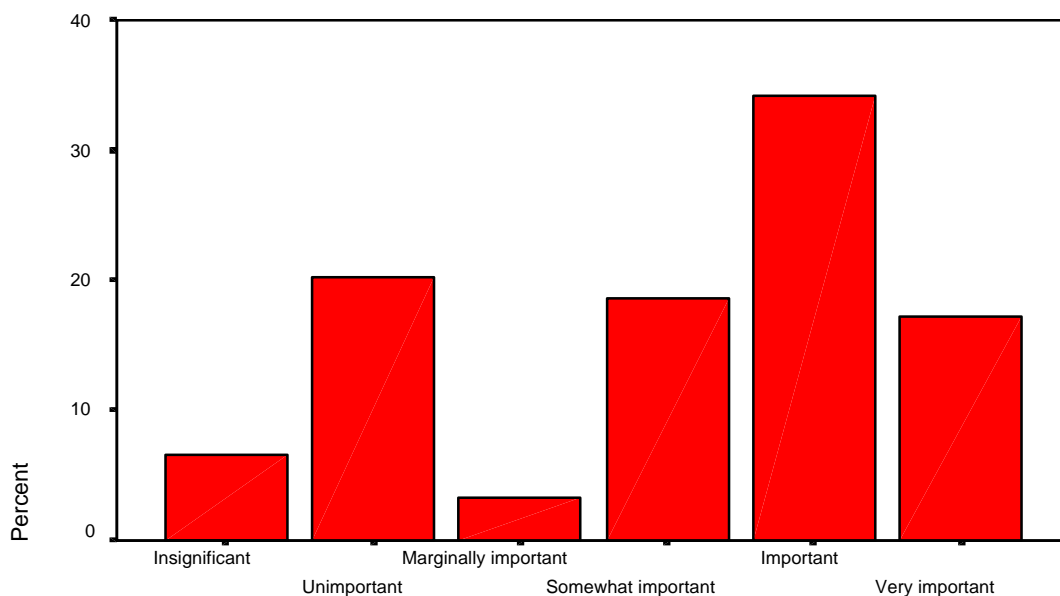
Nearly 40% of Alabamans also perceive that the quality of life in their community is improving, while just over 50% think it is staying the same. Significantly, less than 10% of the survey respondents believed that the quality of life in their community is deteriorating.

Alabamans Believe That Community is Retaining Its Quality of Life

		Frequency	Percent	Valid Percent	Cumulative Percent
Valid	Getting worse	44	9.6	9.8	9.8
	Staying the same	229	50.0	51.0	60.8
	Getting better	176	38.4	39.2	100.0
	Total	449	98.0	100.0	
Missing	Don't know	9	2.0		
Total		458	100.0		

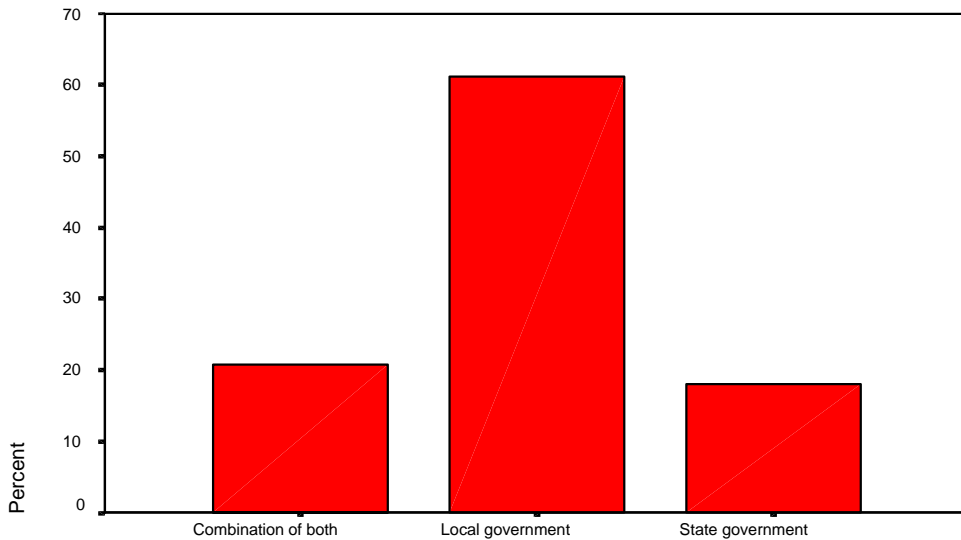
In response to a question concerning the growth rate in their community, 57% of Alabamans feel that their community is growing at just about the right pace. Twenty-two percent of Alabamans believe that their local community is growing too slowly, and 21% believe that growth in their community is much too rapid. When queried if growth management is an important issue, 51% stated that local growth management is an *important* or a *very important* issue, with another 19% answering that it is a *somewhat important* problem. Only about 20% of Alabamans feel that growth management in their local community is an unimportant or insignificant issue.

Alabamans Perceive Community Growth Management to Be Important



Only 18% of Alabamans prefer that state government should handle growth in the local community, and 61% believe that local government should be entrusted with responsibility for growth management. Twenty-one percent prefer that state and local governments should share responsibility for growth management in the community.

Local Government is the Preferred Level of Government for Managing Community Growth



Support among Alabamans is very strong for the creation of long-term land use plans, with 74% of participants in favor. Less than 20% oppose the creation of such plans. There is also considerable public support to restrict or regulate certain types of growth in a community. Seventy-one percent of Alabamans favor growth restrictions and less than 25% oppose such restrictions.

High Level of Support for Local Growth Management Engagement

		Frequency	Percent	Valid Percent	Cumulative Percent
Valid	Strongly oppose	16	3.5	3.9	3.9
	Oppose	86	18.8	20.9	24.8
	Neutral	18	3.9	4.4	29.1
	Support	231	50.4	56.1	85.2
	Strongly support	61	13.3	14.8	100.0
	Total	412	90.0	100.0	
Missing	Don't know	33	7.2		
	System	13	2.8		
	Total	46	10.0		
Total		458	100.0		

The survey was conducted during April 20-25, 2001 and is based upon 458 responses from a statewide random telephone sample.