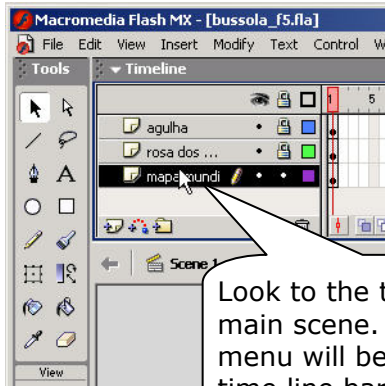


Flash MX

Adding and Deleting Layers

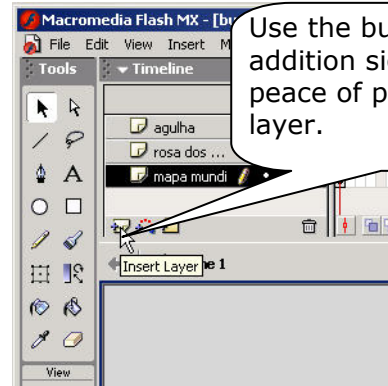


Step 1



Look to the top of the main scene. The layer menu will be a part of the time line bar.

Step 2



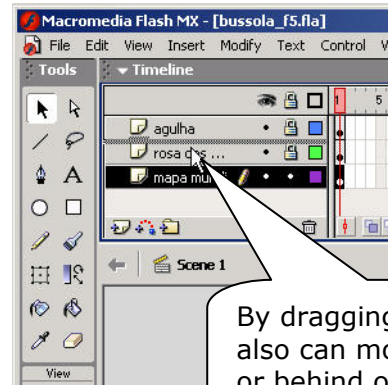
Use the button with the addition sign and the piece of paper to add a layer.

Step 3



Use the trash can button to delete a layer.

Step 4



By dragging a layer, you also can move it in front or behind other layers.