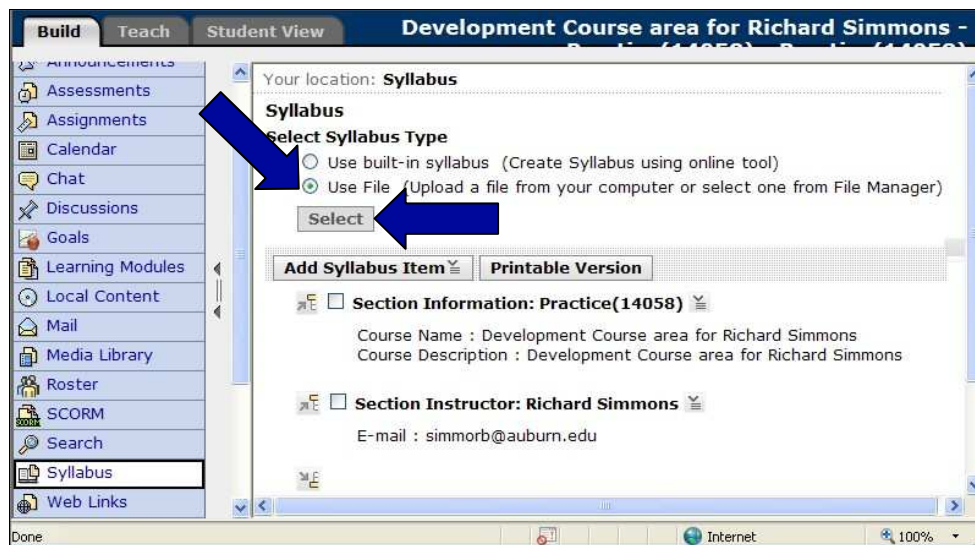


# How to Add a Syllabus

1. Select the **Syllabus** link



2. Select the **Use File** (Upload a file from your computer or select one from File Manager) radio button. Then click the **Select** button

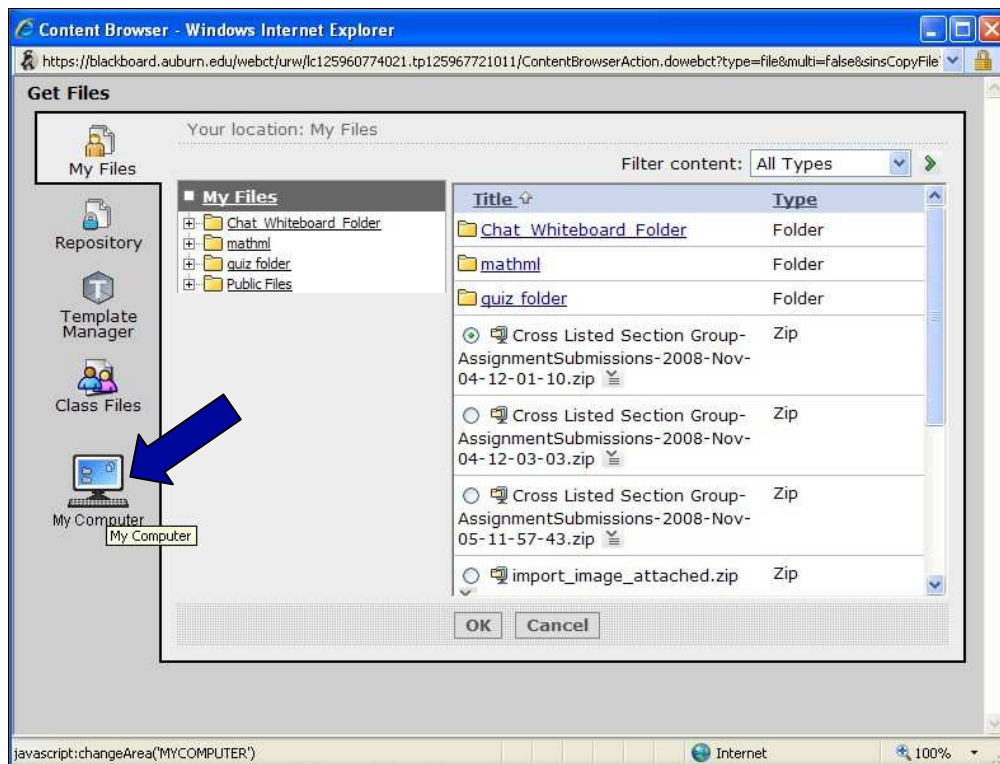


# How to Add a Syllabus

3. Select the **Browse...** link

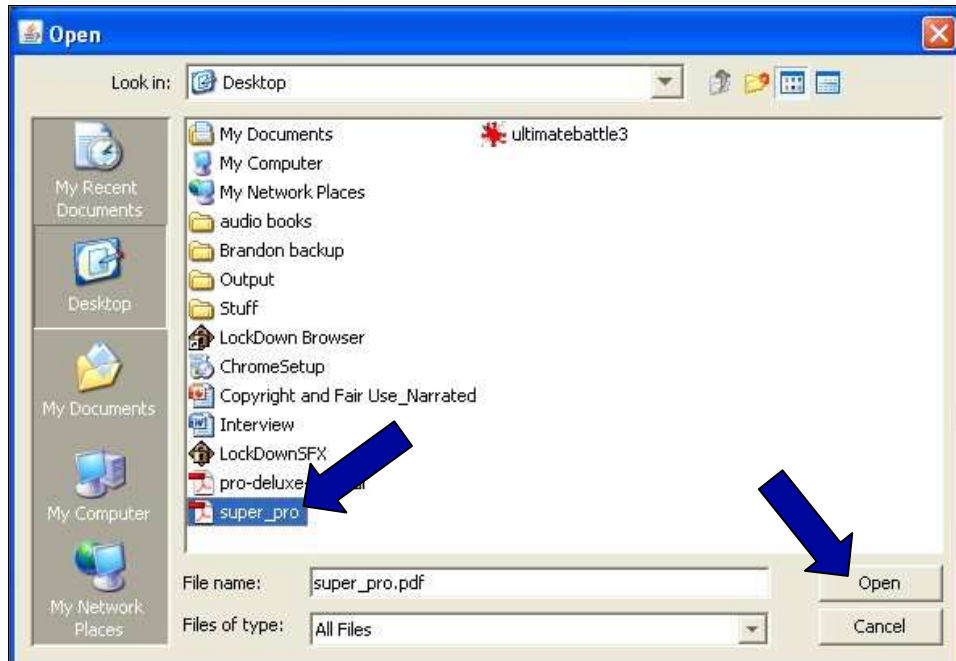


4. Select the **My Computer** icon



# How to Add a Syllabus

5. Select your syllabus file, PDF is recommended, and then click **Open**



6. The syllabus is viewable by students now.

