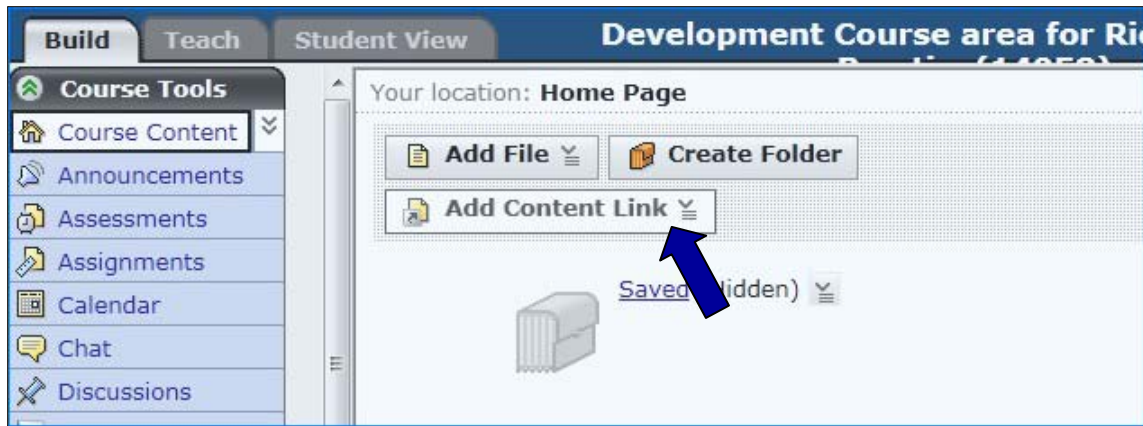
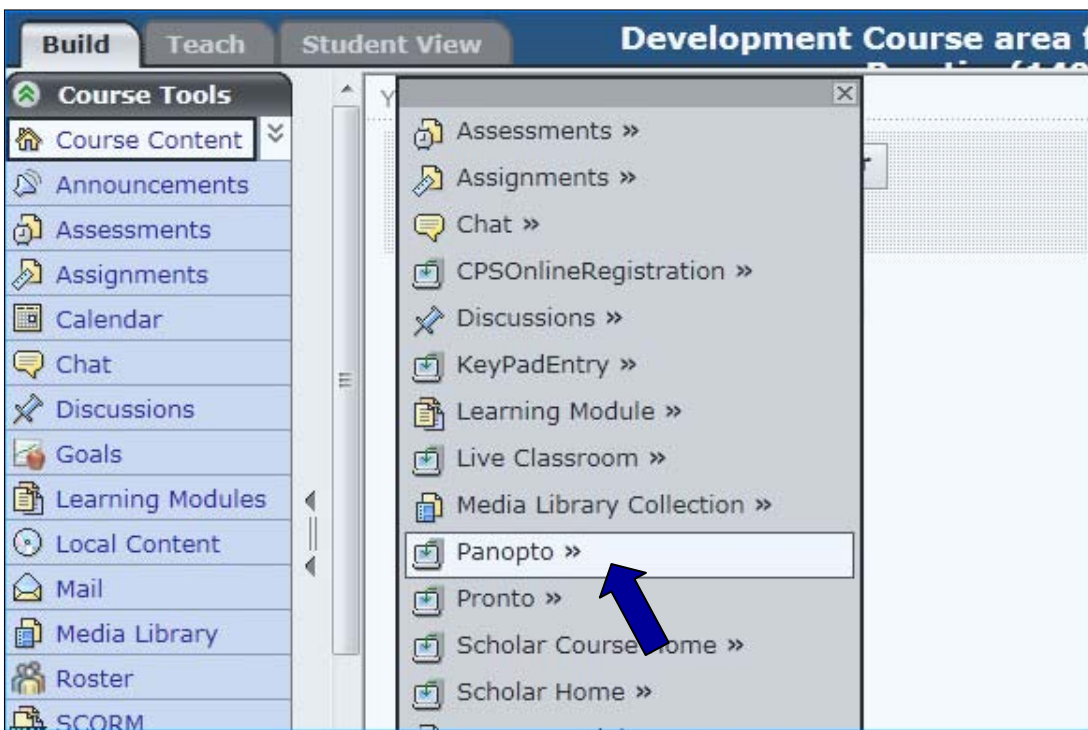


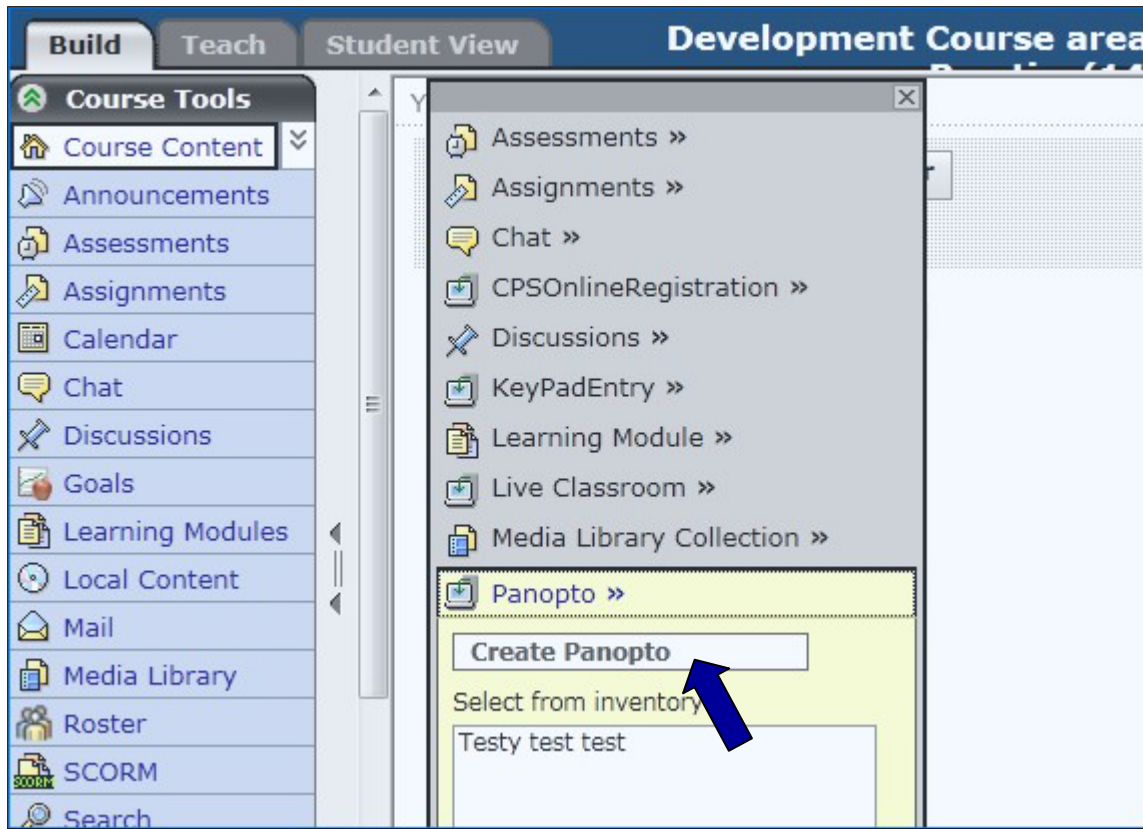
1. Once in Blackboard, select **Add Content Link**.



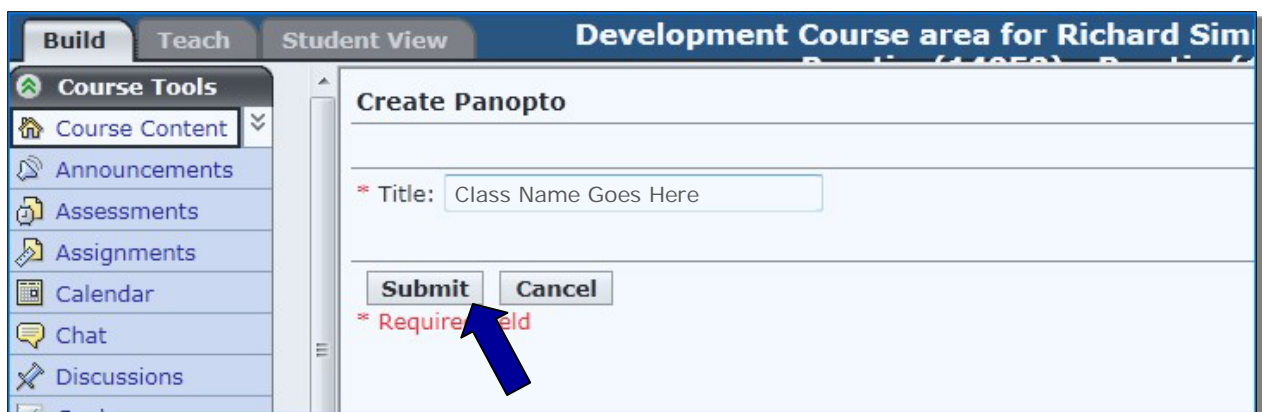
2. Select the **Panopto** link.



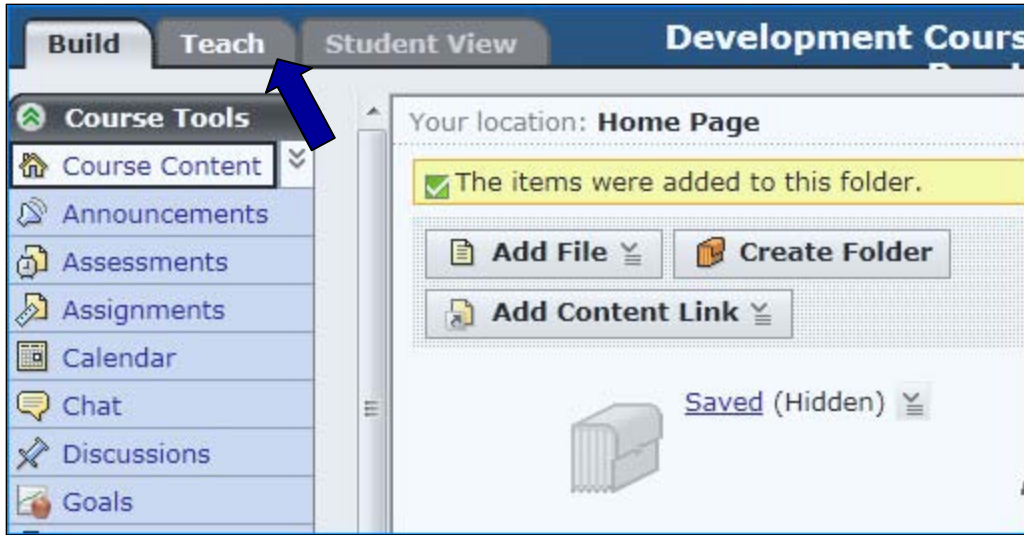
3. Select the **Create Panopto** link.



4. Enter a name for the Panopto link, then click **Submit**.
(**Note:** We strongly recommend using the name of your course.)



- To access Panopto, you will need to be under the Teach tab. Click the **Teach** tab.



- Select the **Panopto** link.



7. Your sessions will appear.

