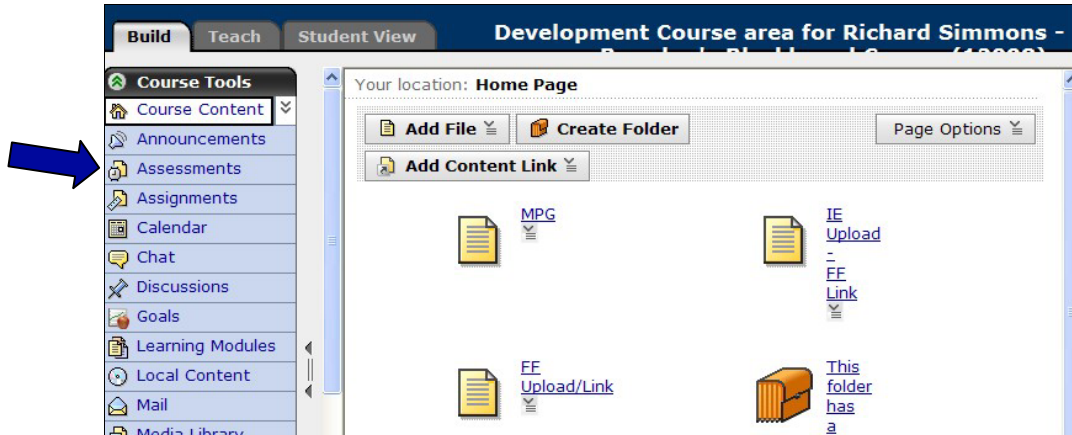


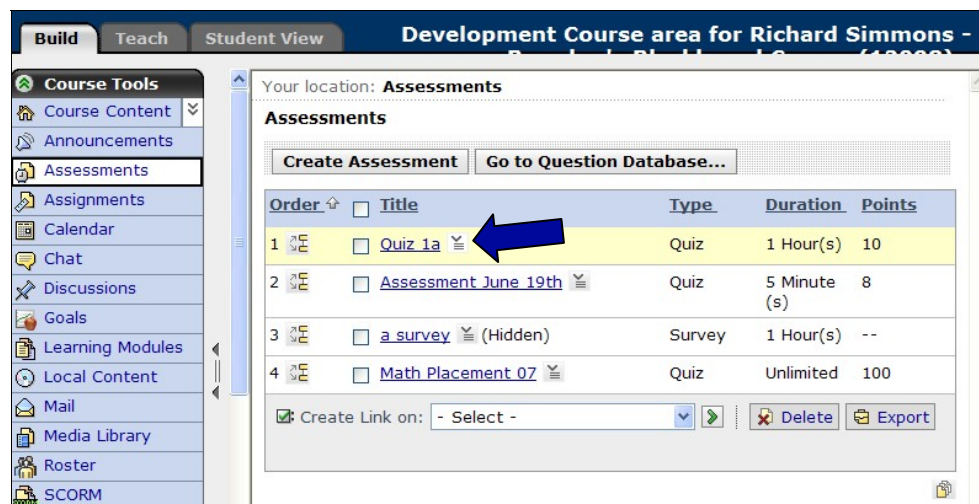
How to Use Basic Selective Release Criteria

1. For this tipsheet, **selective release criteria** will be added to an **Assessment**, but it can be added to other items as well, such as Assignments or Files.

Under the **Build** tab, select **Assessments**.

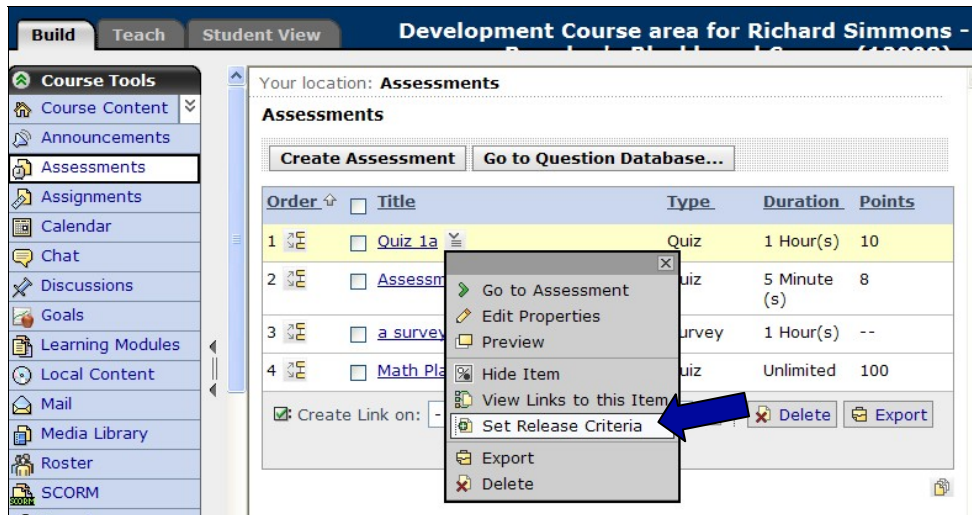


2. Select the **action link** next to the assessment to which you wish to add selective release criteria.

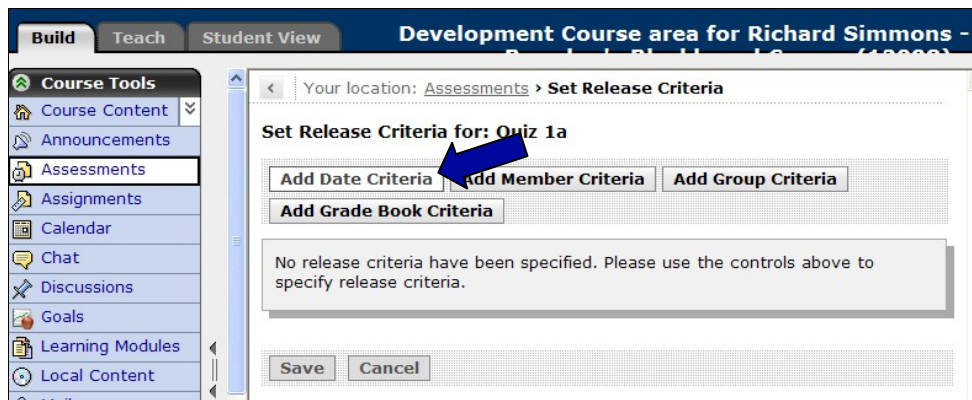


How to Use Basic Selective Release Criteria

3. Select the **Set Release Criteria** link.

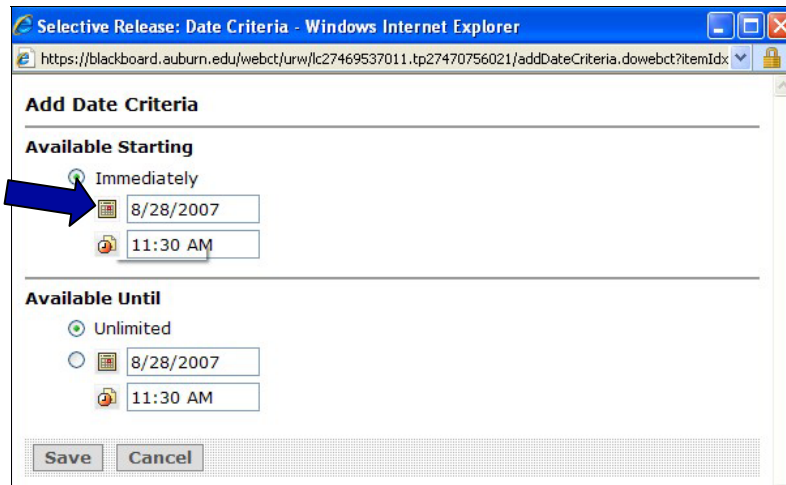


4. Select the **Add Date Criteria** link.

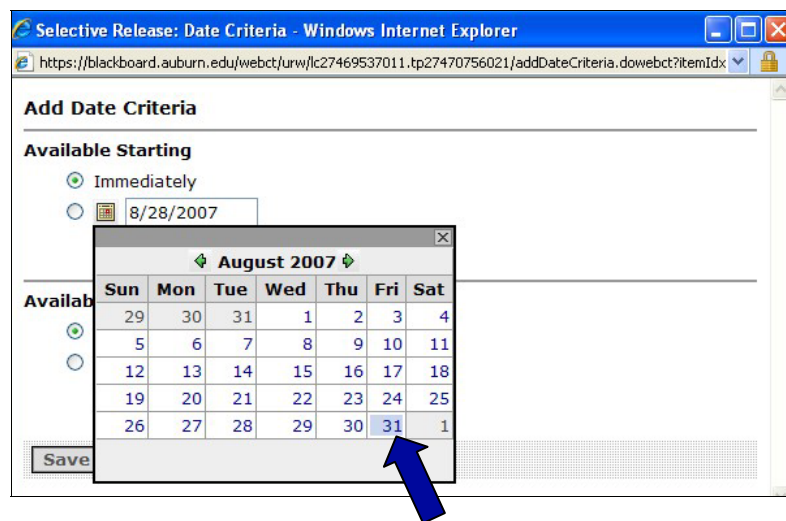


How to Use Basic Selective Release Criteria

- Click the first calendar icon to select a starting date.

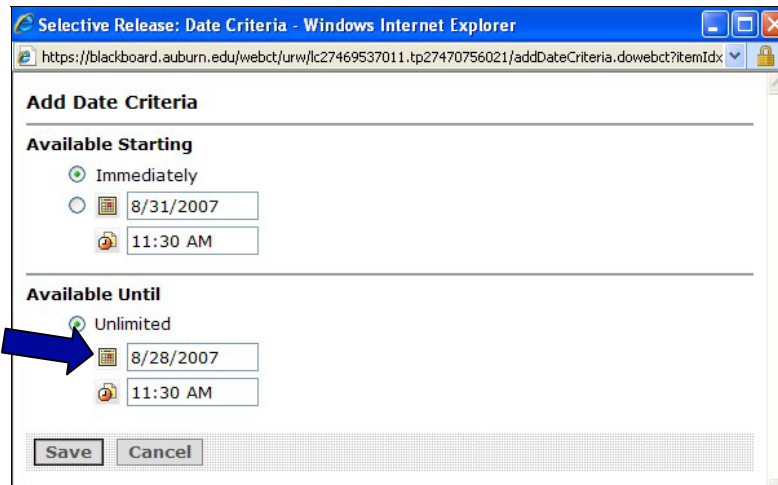


- Select the start date.

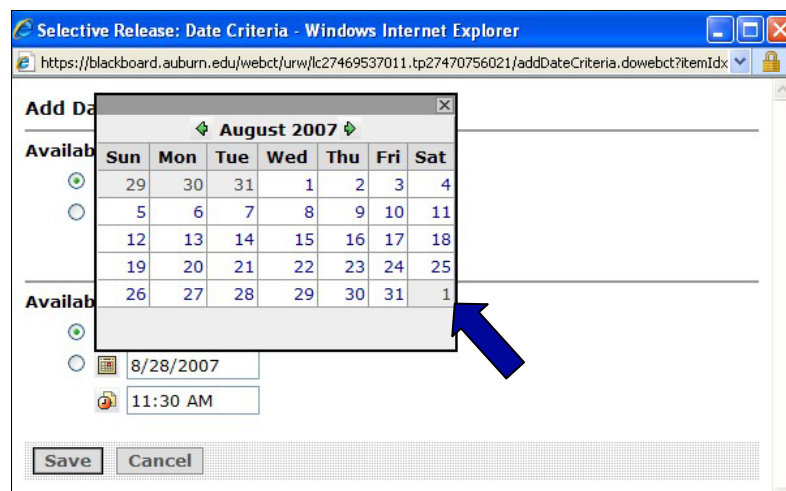


How to Use Basic Selective Release Criteria

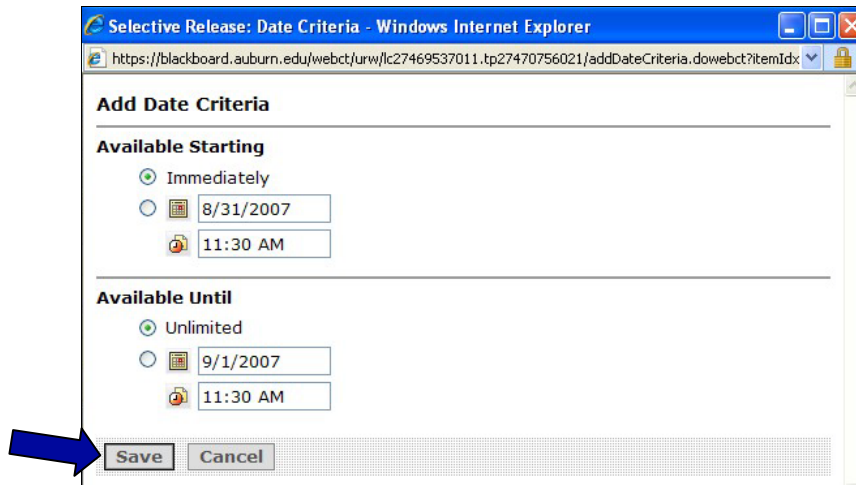
- Click the second calendar icon to select an ending date.



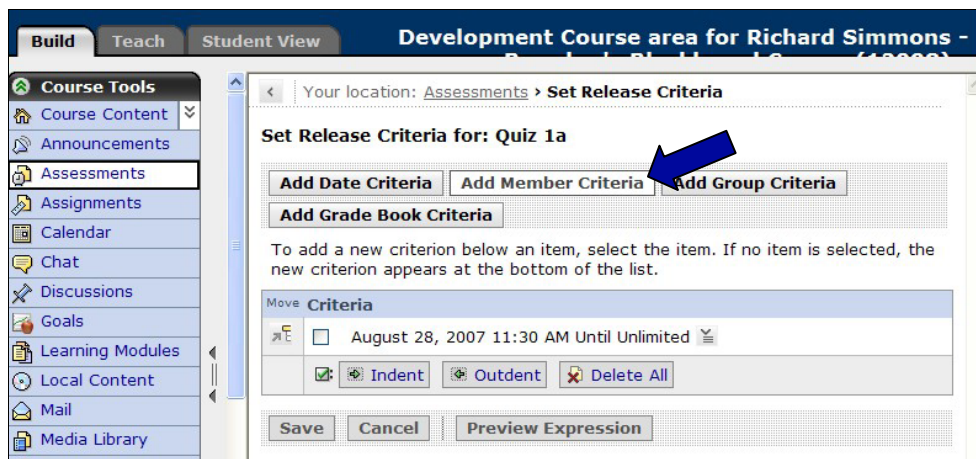
- Select the end date.



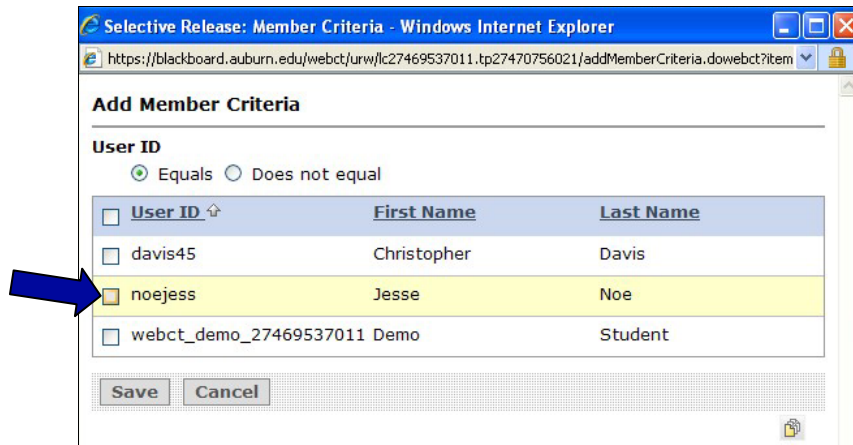
9. Click the **Save** button.



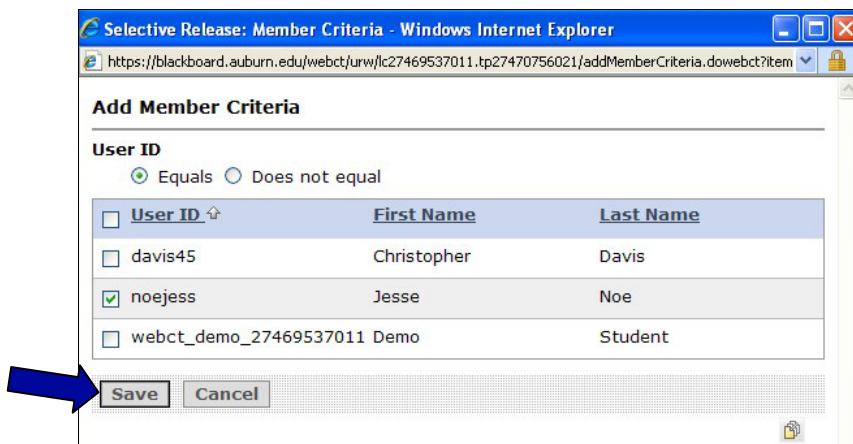
10. Select the **Add Member Criteria** link.



11. Select the check box next to the desired student.



12. Click the **Save** button.

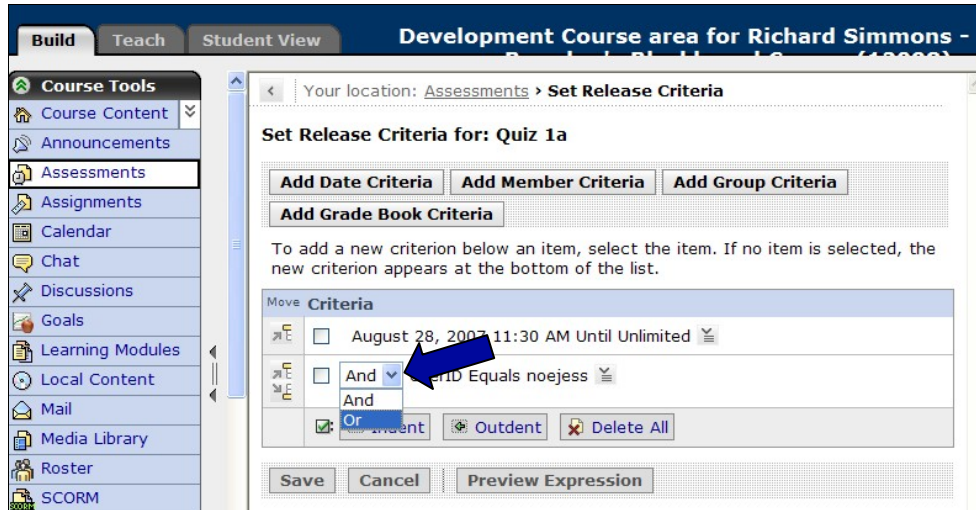


How to Use Basic Selective Release Criteria

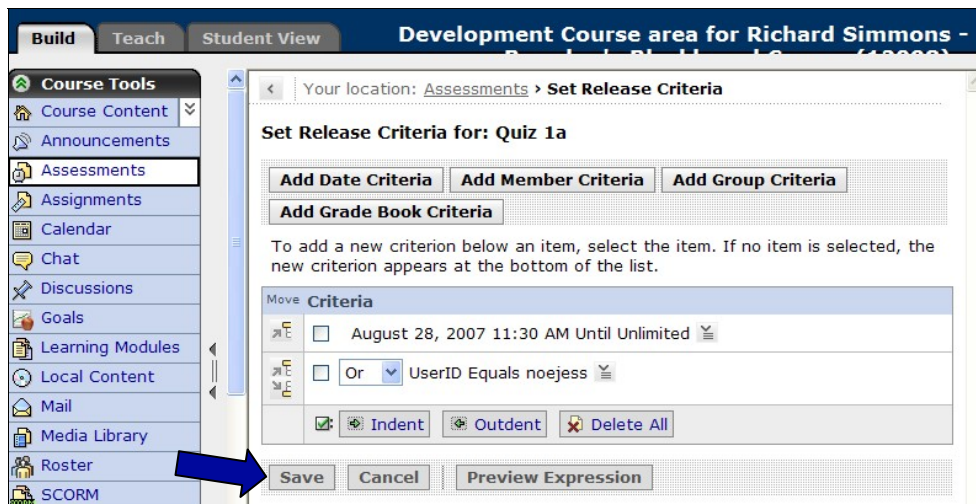
- Click the **And** drop-down arrow and select **Or** for this example.

And: The student may take the assessment only during the designated time.

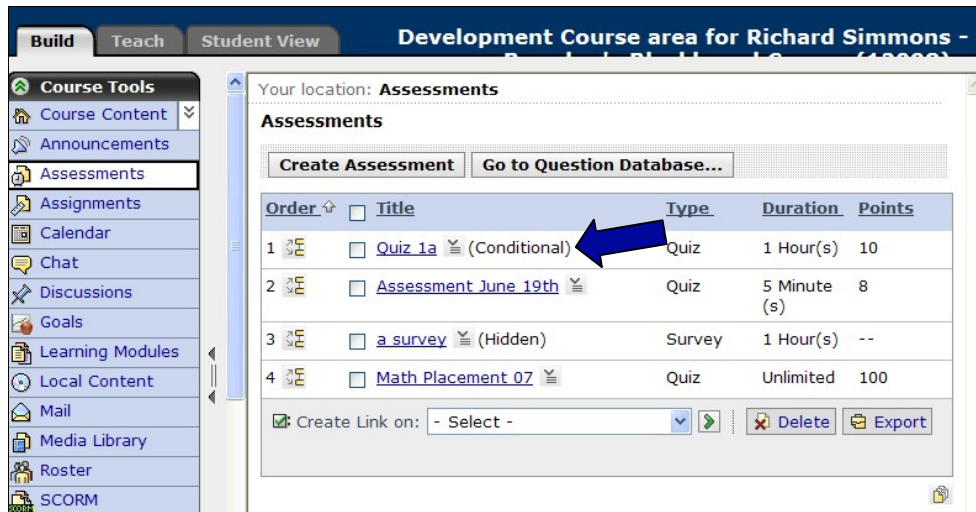
Or: The student may take the assessment anytime OR anyone may take the assessment during the designated time.



- Click the **Save** button.



15. The word **(Conditional)** shows there are release criteria on that assessment.



The screenshot shows the 'Assessments' page in a Learning Management System. The left sidebar contains 'Course Tools' with options like Course Content, Announcements, Assessments, Assignments, Calendar, Chat, Discussions, Goals, Learning Modules, Local Content, Mail, Media Library, Roster, and SCORM. The main content area shows a list of assessments:

Order	Title	Type	Duration	Points
1	Quiz 1a (Conditional)	Quiz	1 Hour(s)	10
2	Assessment June 19th	Quiz	5 Minute (s)	8
3	a_survey (Hidden)	Survey	1 Hour(s)	--
4	Math Placement 07	Quiz	Unlimited	100

At the bottom of the list, there is a 'Create Link on:' dropdown menu set to '- Select -', and buttons for 'Delete' and 'Export'.