

Simple, General, Realistic, Robust, Analytic, Tokamak Equilibria

I. Limiter and Divertor Tokamaks

L. Guazzotto¹ and J. P. Freidberg²

¹ Auburn University, Physics Department, Auburn AL 36849

² MIT, Plasma Science and Fusion Center, Cambridge MA 02139 USA

Abstract

Tokamak equilibria have been derived that are analytic solutions to the Grad-Shafranov equation. Paper I describes a wide range of such equilibria including smooth limiter surfaces, double and single null divertor surfaces, arbitrary aspect ratio, elongation, triangularity, and beta. Paper II generalizes the analysis to include edge pedestals and toroidal flow.

1. Introduction

The title of the paper tells the whole story. We have derived simple, general, realistic, robust, analytic, solutions to the Grad-Shafranov equation describing tokamak equilibria. What is meant by all of these adjectives? “Simple” refers to the fact that the equilibria require only a few, intuitively simple-to-visualize, terms. “General” indicates that the equilibria are valid for a wide range of configurations, including smooth limiter surfaces, double null divertor surfaces, single null divertor surfaces, finite aspect ratio including spherical tokamaks, finite elongation, finite positive and negative triangularity, and small, medium, large beta. “Realistic” implies that our profiles are continuous and monotonic with the pressure, pressure gradient, and toroidal current density smoothly vanishing at the plasma edge. Finite edge pedestals, an edge contribution due to the bootstrap current, and toroidal flow are generalizations included in paper II. “Robust” refers to the fact that only 4 (or 6 for asymmetric configurations) input parameters are required to obtain a solution for the flux surfaces – 3 (or 5) geometrical parameters and 1 simple physically intuitive parameter. The model leads to well behaved solutions every time – no delicate choosing of any parameters. Lastly, “analytic” indicates that our solutions satisfy the exact, unexpanded, Grad-Shafranov equation, and are expressed in terms of known functions. The final results are simple analytic expressions for the flux function and importantly its first and second derivatives.

To put the present work in perspective, it is useful to compare with earlier related research. Solov’ev calculated the first purely analytic equilibrium (Solov’ev 1968). The well-known “Solov’ev profile” is characterized by choosing $dp/d\psi$ and $FdF/d\psi$, the free functions on the right hand side of the Grad-Shafranov equation, as constants. The resulting solutions capture many useful features of tokamak equilibria, but are unrealistic in that important physical profiles have large jumps at the plasma edge. Specifically, in physical space, the toroidal and poloidal current densities, plus the plasma pressure gradient have edge jumps. The pressure itself is parabolic. Even so, it

is an analytic equilibrium and over the years several generalizations have been developed (Zheng et. al. 1996, Weening 2000, Shi 2005, Cerfon et. al. 2010) which allowed application to a much wider range of equilibrium plasma shapes, although still with the same jumps at the plasma edge.

The next step of progress (see for instance Herrnegger 1972, Maschke 1972, De Menna 1977, McCarthy 1999, Atanasiu et. al. 2004, Guazzotto et. al. 2007, Shi 2009) allows the right hand side functions, $dp / d\psi$ and $FdF / d\psi$ to be linear (or linear plus constant) in ψ rather than purely constant. This has the important benefit of producing smooth, monotonic profiles for which the current densities, pressure, and pressure gradient vanish at the plasma edge. The resulting solutions more closely model experimental profiles than the Solov'ev solutions.

In general, the solutions associated with the linear-in- ψ free functions $dp / d\psi$ and $FdF / d\psi$ are complicated, involving a sum of terms obtained by separation of variables. The radial separation functions consist of unintuitive hypergeometric functions, Coulomb wave functions, or Whittaker functions of imaginary order and imaginary argument. Furthermore, the number of terms to be maintained plus the choice of separation constants is not robust, and in some cases delicate choices have to be made to obtain physically realistic solutions. Consequently, even though purely analytic solutions should be helpful in experimental comparisons, reactor design, diagnostic development, MHD stability determination, and benchmarking more general Grad-Shafranov solvers, the complexity and sensitivity of the solutions has hindered implementation from widely occurring.

This assessment applies to the references listed above, from Herrnegger 1972 to Shi 2009, including the one by the present authors Guazzotto et. al. 2007. While the corresponding research traces a continuing path of progress, describing increasingly realistic plasma shapes and experimental comparisons, there is still more work to be done.

In this context, the present work also focuses on analytic solutions in which the right hand side of the Grad-Shafranov equation is a combination of linear and constant terms in ψ . However, an underutilized mathematic insight allows us to overcome the

difficulties just described. In detail, we also use separation of variables and the resulting solutions can again be formally expressed in terms of Whittaker functions. Even so, “Whittaker” is just a “name” for the functions. Our solutions are rewritten in a much more convenient form in which each radial separation function is approximately a sine or cosine. This enables a sharp determination of (a) the number of terms (7 for symmetric and 12 for asymmetric systems) required for the solution as well as (b) the choice plus number of separation constants (4 for both cases). The details are described in the main text. The end result is a robust and general analytic solution to the Grad-Shafranov equation. A computer code has been developed, primarily to plot flux surfaces and carry out post-processing evaluation of various plasma parameters of interest. Typically, the eigenvalue is calculated to 6 figure accuracy (although this can easily be increased), while the value of the flux, and its first and second derivatives, are accurate to 10 - 15 significant figures.

The code, written in MatLab is freely available by contacting Professor Luca Guazzotto lzg0022@auburn.edu. On a laptop computer, it takes about 1 second to calculate and plot the flux surfaces and an additional 1 second for standard post-processing evaluations. The post-processing can take substantially longer, on the order of a minute, if a large number of very high resolution $q(\psi)$ surfaces are required. In its present form the code, which has not been optimized for speed, is not practical for real time reconstruction and control. However, optimization could resolve this problem although the solutions would still be limited by the choice of free functions required for analytic solutions.

In terms of organization, the research is separated into two papers because of the large number of examples to be presented. Paper I focuses on standard tokamaks with smooth, double null divertor or single null divertor plasma surfaces. The plasma edge is idealized, with the pressure, pressure gradient, and current density all vanishing on this surface. Paper II treats the same plasma shapes, but generalizes the edge treatment. Edge jumps, which are a simple approximation to narrow smooth pedestals, in the pressure, pressure gradient, and current density are allowed. Also, the edge localized

portion of the bootstrap current can be included. Toroidal flow is a final feature that is added.

In summary, we believe the work presented here represents a very useful step of progress along the path of obtaining realistic, analytic solutions to the Grad-Shafranov equation. Our hope is that the simplicity, accuracy, and speed of the evaluation code will encourage researchers to make use of the results.

2. Formulation of the problem

- **Starting equations and boundary conditions**

The tokamak equilibria of interest are described by the familiar Grad-Shafranov equation (Lust et. al. 1957, Grad et. al. 1958, Shafranov 1966)

$$R \frac{\partial}{\partial R} \left(\frac{1}{R} \frac{\partial \Psi}{\partial R} \right) + \frac{\partial^2 \Psi}{\partial Z^2} = -\mu_0 R^2 \frac{dp}{d\Psi} - \frac{1}{2} \frac{dF^2}{d\Psi} \quad (1)$$

with Ψ the poloidal flux function and $p(\Psi)$, $F(\Psi) = RB_\phi$ the two free functions. As discussed, we shall assume in Paper I that the free functions are chosen to be quadratic in Ψ ,

$$\begin{aligned} p(\Psi) &= p_0 \left(\frac{\Psi}{\Psi_0} \right)^2 \\ F^2(\Psi) &= R_0^2 B_0^2 \left[1 + \frac{2\delta B}{B_0} \left(\frac{\Psi}{\Psi_0} \right)^2 \right] \end{aligned} \quad (2)$$

Here, Ψ_0 is the flux on the magnetic axis, R_0 is the major radius, B_0 is the vacuum toroidal field at $R = R_0$, p_0 is the pressure on axis, and $\delta B / B_0$ is a measure of the toroidal field diamagnetism on axis. Mathematically and physically, we require that

each of these parameters except Ψ_0 be specified as inputs. The value of Ψ_0 is determined as an output of the calculation. Also, based on our definition of realistic profiles, we require that the plasma pressure, plasma pressure gradient and toroidal current density vanish on the plasma surface. This implies that the boundary condition on Ψ is

$$\Psi(\text{surf}) = 0 \quad (3)$$

With the choice of free functions given above, the Grad-Shafranov equation becomes a linear partial differential equation in Ψ .

$$R \frac{\partial}{\partial R} \left(\frac{1}{R} \frac{\partial \Psi}{\partial R} \right) + \frac{\partial^2 \Psi}{\partial Z^2} + \left(\frac{2\mu_0 p_0}{\Psi_0^2} R^2 + \frac{2R_0^2 B_0 \delta B}{\Psi_0^2} \right) \Psi = 0 \quad (4)$$

- **The solution procedure**

The procedure used in earlier studies to obtain solutions is to introduce an appropriate set of normalized variables and then solve the resulting equation by separation of variables. For example, define $R = Ku^{1/2}$, $Z = Kv$, $K = (\Psi_0^2 / 2\mu_0 p_0)^{1/4}$.

The Grad-Shafranov equation reduces to

$$4u \frac{\partial^2 \Psi}{\partial u^2} + \frac{\partial^2 \Psi}{\partial v^2} + (u + \zeta) \Psi = 0 \quad \zeta = \frac{2R_0^2 B_0 \delta B K^2}{\Psi_0^2} \quad (5)$$

Solutions to this equation can be found by summing a finite or infinite set of terms, each obtained by separation of variables,

$$\Psi(u, v) = \sum U_n(u)V_n(v)$$

$$\frac{d^2V_n}{dv^2} + \zeta_n V_n = 0 \tag{6}$$

$$\frac{d^2U_n}{du^2} + \left(\frac{1}{4} + \frac{\zeta - \zeta_n}{4u} \right) U_n = 0$$

Here, ζ_n is the n^{th} separation constant, which can be positive or negative. The solution is given by

$$V_n(v) = c_1 \exp(i\zeta_n^{1/2}v) + c_2 \exp(-i\zeta_n^{1/2}v)$$

$$U_n(u) = c_3 W_{i\kappa, 1/2}(iu) + c_4 M_{i\kappa, 1/2}(iu) \tag{7}$$

where $\kappa = (\zeta - \zeta_n) / 4$ and $W_{i\kappa, 1/2}(iu), M_{i\kappa, 1/2}(iu)$ are Whittaker functions.

The Whittaker solutions are a mixed blessing. On the positive side, the solutions are known analytic functions. This is important because many basic mathematical properties have been derived and are easily accessible in the literature. Also, they can be called in well-known mathematical programs such as MatLab and Mathematica or solved for by direct numerical computation.

On the negative side, there is no guarantee that a sum of such terms will converge to a desired solution. The reason is that the natural convergence boundaries for the R, Z separated coordinates are rectangles while plasma boundaries are quite different, typically an elongated D-shape. Thus, the radius of convergence of the series may not include the entire plasma shape. It is somewhat like trying to fit a round peg into a square hole. Another point is that the solutions are not very intuitive as they consist of Whittaker functions of imaginary order with imaginary argument. This lack of intuition makes it difficult to choose values for the separation constants, and equally important, to decide how many terms to keep in the series. Similarly, the normalized scale length is un-intuitively connected to the real geometry. Lastly, while Whittaker functions are available in standard mathematical programs, their evaluation can be time consuming.

Even with these negative factors, authors have been successful in making the solutions work to a certain extent. However, because of their complexity, they have not been as widely used as might be expected.

- **A new approach**

After analyzing the difficulties with the Whittaker function procedure, we have developed a new approach to solving the linear partial differential equation. The approach is also based on separation of variables, but is much more mathematically intuitive, thereby eliminating many of the difficulties just discussed. Specifically, the number of terms in the series, the choice of separation constants, and behavior of the solutions are much easier to understand and obtain. This progress is the result of exploiting an underutilized mathematical insight into the nature of the separated solutions.

Several steps are required to reduce the problem to the desired form. First, we introduce a normalized flux and simple normalized coordinates into Eq. (4). The normalizations are defined by

$$\begin{aligned}
 \Psi &= \Psi_0 \psi & 0 \leq \psi \leq 1 \\
 R &= R_0 r^{1/2} = R_0 (1 + \varepsilon^2 + 2\varepsilon x)^{1/2} & -1 \leq x \leq 1 \\
 Z &= ay & -\kappa \leq y \leq \kappa
 \end{aligned} \tag{8}$$

Here, a is the plasma minor radius, $\varepsilon = a / R_0$ is the inverse aspect ratio, and κ is the plasma elongation, all assumed to be known inputs. The Grad-Shafranov equation and boundary condition reduce to

$$\begin{aligned}
(1 + \hat{\varepsilon}x) \frac{\partial^2 \psi}{\partial x^2} + \frac{1}{1 + \varepsilon^2} \frac{\partial^2 \psi}{\partial y^2} &= -\alpha^2 (1 + \hat{\varepsilon}\nu x) \psi & \psi(\text{surf}) &= 0 \\
\hat{\varepsilon} &= \frac{2\varepsilon}{1 + \varepsilon^2} < 1 \\
\alpha^2 &= \frac{2R_0^2 a^2}{\Psi_0^2} \left(\mu_0 p_0 + \frac{B_0 \delta B}{1 + \varepsilon^2} \right) \geq 0 \\
\nu &= \frac{\mu_0 p_0}{\mu_0 p_0 + B_0 \delta B / (1 + \varepsilon^2)} \geq 0
\end{aligned} \tag{9}$$

There are several points worth discussing. First, note that $\psi = 0$ satisfies the equation and boundary condition. Our problem is thus an eigenvalue problem as has previously been pointed out by several authors (Goedbloed 1984, Takeda et. al. 1991, LoDestro et. al. 1994, Pataki et. al. 2013)

Nontrivial solutions exist only for special choices of the eigenvalue α^2 . Only positive eigenvalues $\alpha^2 > 0$ need be considered, to insure that the physical requirement of non-reversed toroidal current density is satisfied. Since $\alpha \propto 1 / \Psi_0$ the eigenvalue determines the unknown value of the flux on axis.

Second, for a given geometry, the parameter ν is assumed to be a known quantity since p_0 and $B_0 \delta B$ are, at this point, known inputs. It is critical to recognize that values of both p_0 and $B_0 \delta B$ are required for post-processing in order to evaluate various plasma quantities of interest. However, only the value of a single parameter ν is needed to determine the solution for ψ itself. Furthermore, it is shown in Section 6 that $\nu \approx \beta_p$, the poloidal beta, thus making it easy to choose reasonable values. To be more specific, the interesting range of ν is defined by

$$\begin{aligned}
0 \leq \nu \leq \nu_{\max} \\
\nu = 0 & \quad \text{Force free } (p_0 = 0) \\
\nu = 1 & \quad \beta_p = 1 \ (\delta B = 0) \\
\nu = \nu_{\max} = 1 / \hat{\varepsilon} & \quad \text{Inboard current reversal at } R = R_0 - a \ (\text{high } \beta)
\end{aligned} \tag{10}$$

Note that solutions can be easily found for $\nu > \nu_{\max}$. However, these are considered to be physically uninteresting since they correspond to a reversal in direction of the toroidal current density near the inboard midplane.

Third, the normalization requirement $\psi(\text{axis}) = 1$ is simple to satisfy. Since Eq. (9) is linear in ψ , the condition just corresponds to a rescaling of the eigenfunction. Lastly, observe that in the large aspect ratio limit, $\varepsilon = \hat{\varepsilon} = 0$, the equation reduces to the basic Cartesian form of Poisson's equation. The separated solutions are then intuitively simple sines, cosines or hyperbolic sines, cosines. The toroidal modifications are proportional to $\varepsilon < 1$. For most practical configurations of interest ε is not very large: $\varepsilon \sim 0.2 - 0.5$. This, we shall see shortly, suggests a rapidly converging power series representation of the radial separated variable functions. It also provides a primary motivation for our choice of independent variable x .

- **Separation of variables and a mathematical insight**

The next step in the analysis is to solve Eq. (9) using separation of variables,

$$\psi(x, y) = \sum X_n(x)Y_n(y) \quad (11)$$

For the moment we do not specify the number of terms to be included in the summation. The equations for X_n, Y_n are given by

$$\begin{aligned} \frac{d^2 Y_n}{dy^2} + h_n^2 Y_n &= 0 \\ (1 + \hat{\varepsilon}x) \frac{d^2 X_n}{dx^2} + (k_n^2 + \lambda^2 x) X_n &= 0 \\ k_n^2 &= \alpha^2 - \frac{h_n^2}{1 + \varepsilon^2} \\ \lambda^2 &= \alpha^2 \hat{\varepsilon} \nu \end{aligned} \quad (12)$$

In these equations, h_n^2 is the separation constant. Also, for physical systems recall that $\alpha^2 > 0$ and correspondingly $\lambda^2 > 0$.

At this point we do not know how to choose the separation constants h_n^2 , which may be positive or negative with magnitudes small, medium, or large. It is here that mathematical insight proves crucial. The key point is the recognition that physically interesting solutions must have closed flux surfaces everywhere within the plasma. Therefore, if we make each term in our expansion separately produce closed flux surfaces about the geometric axis $x = 0, y = 0$, then when summing the terms, the total flux surfaces will automatically be closed around $x = 0, y = 0$, and almost certainly around the magnetic axis as well.

Mathematically, the surfaces for each expansion term must be shifted ellipses with the center located approximately on the magnetic axis. Since the solution for each expansion term behaves like $\psi_n = c_0 + c_1x + c_2y + c_3x^2 + c_4y^2 + \dots$ near the geometric axis, the implication is that c_3, c_4 must have the same sign, either positive or negative, for closed surfaces. Now, if $h_n^2 < 0$, then $k_n^2 > 0$ and the signs for c_3, c_4 are opposite and the surfaces are open. If, however, we choose $h_n^2 > 0$ but limit its magnitude so that $k_n^2 > 0$, then each and every term in the summation produces closed flux surfaces near the axis. This insight translates into the following constraints on the separation constants,

$$\begin{aligned} 0 \leq h_n^2 \leq h_{\max}^2 & & h_{\max} &= (1 + \varepsilon^2)^{1/2} \alpha \\ k_{\max}^2 \geq k_n^2 \geq 0 & & k_{\max} &= \alpha \end{aligned} \tag{13}$$

Choosing the separation constants substantially outside this range leads to separate terms in the expansion having open flux surfaces near the axis, which then have to be compensated by other terms with comparable and cancelling open flux surfaces. This is often a delicate balance, sometimes requiring many terms in the solution or even possibly not having a solution at all.

Implementation of these constraints is the reason why realistic solutions require only a few terms in the summation. Specifically, in the sections that follow we shall show that realistic solutions require only 4 separation constants and either 7 or 12 terms in the summation depending on whether the configuration of interest is up-down symmetric or asymmetric. These numerical values are not empirical but are based on firm mathematical constraints.

Having laid the groundwork, we close this section by deriving the actual solutions for the separation functions $X_n(x)$ and $Y_n(y)$. The $Y_n(y)$ solutions are straightforward,

$$Y_n(y) = \begin{cases} \cos(h_n y) \\ \sin(h_n y) \end{cases} \quad (14)$$

The $X_n(x)$ solutions are more complicated. We could write them in terms of Whittaker functions, but that would negate the usefulness of many of the steps so far introduced. Instead, let us take a step back and reexamine the $X_n(x)$ equation, given by Eq. (12). This equation has a regular singular point at $x = -1/\hat{\varepsilon}$ ($R = 0$) and an irregular singular point at $x = R = \infty$. However, the regime of interest $-1 \leq x \leq 1$ does not include either singularity. From a mathematical point of view, the equation is “boring”. This behavior coupled with the fact that $X_n(x)$ reduces to sines and cosines as $\varepsilon \rightarrow 0$ suggests that simple intuitive representations of its two solutions can be written as

$$X_n(x) = \begin{cases} C_n(x) = \sum [\hat{a}_m x^m \cos(k_n x) + \hat{b}_m x^m \sin(k_n x)] \\ S_n(x) = \sum [\tilde{a}_m x^m \cos(k_n x) + \tilde{b}_m x^m \sin(k_n x)] \end{cases} \quad (15)$$

We expect each power series to be rapidly converging since the m^{th} coefficients are proportional to $\hat{\varepsilon}^m$. It is a simple matter to calculate the recursion relations for the coefficients $\hat{a}_m, \hat{b}_m, \tilde{a}_m, \tilde{b}_m$ as well as analytic first and second derivatives. The details are described in Appendix A. The end results are indeed highly accurate and

computationally fast representations of $C_n(x)$ and $S_n(x)$ plus first and second derivatives. Stated differently, $C_n(x)$ and $S_n(x)$ can be viewed as known mathematical functions. They are Whittaker functions that just happen to be expressed in a particularly convenient way that exploits the “boring” behavior of the solutions in the regime of interest.

The tokamak equilibrium problem has now been formulated. As such, we are now in a position to investigate various applications of interest.

3. Smooth, up-down symmetric limiter equilibria

- **Number of terms in the series**

The number of terms and corresponding separation constants in the $\psi(x, y)$ series is determined by the number of constraints that must be applied. The number of constraints is based on the following mathematical intuition. Start by recognizing that the flux surfaces near the axis are, by construction, closed surfaces. It then makes sense to require the flux, its slope, and its curvature to match a specified desired model surface at four critical points around the circumference: (a) the inner midplane point, (b) the outer midplane point, (c) the upper maximum point, and (d) the lower maximum point. This, in principle, corresponds to 12 constraints.

For an up-down symmetric configuration, the lower maximum point constraint is automatically satisfied by choosing only the $\cos(h_n y)$ terms in the $Y_n(y)$ series. This reduces the number of constraints from 12 to 9. Furthermore, since $\cos(h_n y)$ is up-down symmetric, the slope constraints at the inner and outer midplane points are also automatically satisfied. This reduces the number of constraints by an additional factor of 2 from 9 to 7.

The conjecture is that 7 carefully chosen terms in the series for $\psi(x, y)$ should produce a set of closed flux surfaces whose boundary closely approximates the specified model surface.

- **Choice of the separation constants**

How many separation constants are needed and what values should they have in order to be able to satisfy the 7 constraints? Now, each separation constant leads to 2 terms in the series, one proportional to $C_n(x)$, the other to $S_n(x)$. Allowing 3 separation constants corresponds to 6 terms in the series (not enough by one) while 4 separation constants produce 8 terms (one too many). The minimum number of required separation constants is, therefore, equal to 4 although we need to decide the fate of the one extra term.

One possibility is to add another constraint. A simpler idea, and the one utilized in our studies, is to choose one of the separation constants, say h_1^2 , to make $k_1^2 = 0$,

$$h_1 = h_{\max} = (1 + \varepsilon^2)^{1/2} \alpha \quad \rightarrow \quad k_1 = 0 \quad (16)$$

This is useful, because as shown in Appendix A, the function $S_1(x)$ with $k_1 = 0$ is identically zero, thereby eliminating one term in the series, reducing the total number from 8 to the desired 7. The conclusion is that for a smooth up-down symmetric configuration, the solution for $\psi(x, y)$ and its first and second derivatives can be written as

$$\begin{aligned}
\psi(x, y) &= c_1 \cos(h_1 y) C_1(x) + \sum_2^4 \cos(h_n y) [c_n C_n(x) + s_n S_n(x)] \\
\frac{\partial \psi(x, y)}{\partial x} &= c_1 \cos(h_1 y) C_1'(x) + \sum_2^4 \cos(h_n y) [c_n C_n'(x) + s_n S_n'(x)] \\
\frac{\partial \psi(x, y)}{\partial y} &= -c_1 h_1 \sin(h_1 y) C_1(x) - \sum_2^4 h_n \sin(h_n y) [c_n C_n(x) + s_n S_n(x)] \\
\frac{\partial^2 \psi(x, y)}{\partial x^2} &= c_1 \cos(h_1 y) C_1''(x) + \sum_2^4 \cos(h_n y) [c_n C_n''(x) + s_n S_n''(x)] \\
\frac{\partial^2 \psi(x, y)}{\partial y^2} &= -c_1 h_1^2 \cos(h_1 y) C_1(x) - \sum_2^4 h_n^2 \cos(h_n y) [c_n C_n(x) + s_n S_n(x)]
\end{aligned} \tag{17}$$

The 7 unknown expansion coefficients to be determined by the constraints are

$$\mathbf{u} = [c_1, c_2, s_2, c_3, s_3, c_4, s_4].$$

The next step is the choice of the other separation constants h_2, h_3, h_4 . Intuitively, we might expect that equal separation of their values would be useful so as to prevent two terms from being too similar, thereby reducing the amount of independent information in the series. But, this turns out to not exactly be the case.

We have, in fact, tried a wide range of h_n , all satisfying the constraint given by Eq. (13). A large fraction, but not all, of these choices yield very similar flux surfaces. Keep in mind that they are all analytic solutions to the Grad-Shafranov equation, the only difference being how closely they approximate the model surface. However, since the model surface is only a model surface, there is nothing fundamental about it. Each viable choice of the h_n produces very reasonable looking surfaces, all with the same elongation and triangularity, and similar values for beta and safety factor. In short, there is not a strong motivation to devote computational effort choosing the h_n to get as close a match to the model surface as possible.

Instead, our strategy has been to develop a simple, empirical, essentially universal, algorithm for choosing the h_n that works robustly over a very wide range of magnetic geometries and plasma parameters. Many, many test cases have shown that the choices below accomplish this goal,

$$\begin{aligned}
h_1 &= (1 + \varepsilon^2)^{1/2} \alpha & k_1 &= 0 \\
h_2 &= \left(\frac{35}{36}\right)^{1/2} (1 + \varepsilon^2)^{1/2} \alpha & k_2 &= \left(\frac{1}{6}\right) \alpha \\
h_3 &= \left(\frac{13}{49}\right)^{1/2} (1 + \varepsilon^2)^{1/2} \alpha & k_3 &= \left(\frac{6}{7}\right) \alpha \\
h_4 &= 0 & k_4 &= \alpha
\end{aligned} \tag{18}$$

Observe that the optimal choices in k_n are bunched near the maximum and minimum values and not equally spaced as might have been expected.

The number of terms in the series plus the separation constants have now been defined.

- **Model surface and matching constraints**

A good choice for a model surface that produces smooth, up-down symmetric, configurations is the well-known Miller profile [Miller et. al. 1998]. Although known as the ‘‘Miller profile’’, Miller et. al. actually credit the profile to an earlier paper [Todd et. al. 1979]. For the actual surface coordinates R_s, Z_s , plus the corresponding normalized surface coordinates x_s, y_s , the Miller profile is defined in terms of an angle-like parameter θ , $0 \leq \theta \leq 2\pi$, as follows

$$\begin{aligned}
R_s &= R_0 + a \cos(\theta + \hat{\delta} \sin \theta) \rightarrow x_s(\theta) = \cos(\theta + \hat{\delta} \sin \theta) - \frac{\varepsilon}{2} \sin^2(\theta + \hat{\delta} \sin \theta) \\
Z_s &= a\kappa \sin \theta \rightarrow y_s(\theta) = \kappa \sin \theta
\end{aligned} \tag{19}$$

Here, κ is the elongation, δ is the triangularity, and $\hat{\delta} = \sin^{-1} \delta$.

The next task is to define the 7 constraints at the matching points: inner midplane point $\theta = \pi, x_s = -1, y_s = 0$, outer midplane point $\theta = 0, x_s = 1, y_s = 0$, and upper

maximum point $\theta = \pi / 2$, $x_s = -\delta - (\varepsilon / 2)(1 - \delta^2)$, $y_s = \kappa$. The flux and slope constraints are easy to specify,

$$\begin{aligned}
(a) \quad \psi(-1, 0) &= 0 && \text{Flux surface at } \theta = \pi \\
(b) \quad \psi(1, 0) &= 0 && \text{Flux surface at } \theta = 0 \\
(c) \quad \psi(-x_\delta, \kappa) &= 0 && \text{Flux surface at } \theta = \pi / 2 \\
(d) \quad \psi_x(-x_\delta, \kappa) &= 0 && \text{Flux surface slope at } \theta = \pi / 2
\end{aligned} \tag{20}$$

where we have defined $x_\delta = \delta + (\varepsilon / 2)(1 - \delta^2)$.

The curvature constraints require a short analysis. Their evaluation requires the local expansion of the surface about the three critical matching points. A simple calculation yields

$$\begin{aligned}
x_s + 1 &\approx \frac{(1 - \varepsilon)(1 - \hat{\delta})^2}{2\kappa^2} y_s^2 && \theta = \pi \\
x_s - 1 &\approx -\frac{(1 + \varepsilon)(1 + \hat{\delta})^2}{2\kappa^2} y_s^2 && \theta = 0 \\
y_s - \kappa &\approx -\frac{\kappa}{2(1 - \varepsilon\delta)^2(1 - \delta^2)} (x_s + x_\delta)^2 && \theta = \pi / 2
\end{aligned} \tag{21}$$

These relations can be converted into flux function constraints by expanding $\psi(x, y)$ about the same three points,

$$\begin{aligned}
\psi(x_s, y_s) &\approx \frac{\partial\psi(-1, 0)}{\partial x} (x_s + 1) + \frac{\partial^2\psi(-1, 0)}{\partial y^2} \frac{y_s^2}{2} = 0 && \theta = \pi \\
\psi(x_s, y_s) &\approx \frac{\partial\psi(1, 0)}{\partial x} (x_s - 1) + \frac{\partial^2\psi(1, 0)}{\partial y^2} \frac{y_s^2}{2} = 0 && \theta = 0 \\
\psi(x_s, y_s) &\approx \frac{\partial^2\psi(-x_\delta, \kappa)}{\partial x^2} \frac{(x_s + x_\delta)^2}{2} + \frac{\partial\psi(-x_\delta, \kappa)}{\partial y} (y_s - \kappa) = 0 && \theta = \pi / 2
\end{aligned} \tag{22}$$

Combining Eqs. (21) and (22) we see that the curvature constraints reduce to

$$\begin{aligned}
(e) \quad & \frac{\psi_{yy}(-1,0)}{\psi_x(-1,0)} = -\frac{(1-\varepsilon)(1-\hat{\delta})^2}{\kappa^2} \equiv -\Lambda_1 & \theta = \pi \\
(f) \quad & \frac{\psi_{yy}(1,0)}{\psi_x(1,0)} = \frac{(1+\varepsilon)(1+\hat{\delta})^2}{\kappa^2} \equiv \Lambda_2 & \theta = 0 \\
(g) \quad & \frac{\psi_{xx}(-x_\delta, \kappa)}{\psi_y(-x_\delta, \kappa)} = \frac{\kappa}{(1-\varepsilon\delta)^2(1-\delta^2)} \equiv \Lambda_3 & \theta = \pi/2
\end{aligned} \tag{23}$$

Equations (20) and (23) are the seven constraints on the flux function that determine α^2 and the unknown expansion coefficients. In terms of obtaining realistic analytic equilibria, it is worth emphasizing that the only purpose of the model surface is to provide reasonable values for the surface curvature at the three critical matching points.

- **Solution**

Using the results obtained in Appendix A, the constraint relations lead to a set of linear homogeneous algebraic equations for the expansion coefficients

$$\vec{\mathbf{A}}(\alpha) \cdot \mathbf{u} = 0 \tag{24}$$

Here, α appears as an eigenvalue but in a complex way, both as a “standard” eigenvalue, but also in the separation constants.

The following procedure can be used to determine α and the expansion coefficients. Assume values for $\varepsilon, \kappa, \delta, \nu$ have been specified. Set the coefficient $c_1 = 1$. Now, solve the first six constraint equations, (a) – (f), for the six unknowns $c_2, c_3, c_4, s_2, s_3, s_4$.

This is a simple linear solve. The key point is that only if α^2 just happens to be the correct value will the seventh equation be satisfied. In general, it will not be satisfied

and some form of iteration on α is required. Schematically, constraint (g) can be written as

$$Q_1 + Q_2 c_2 + Q_3 s_2 + Q_4 c_3 + Q_5 s_3 + Q_6 c_4 + Q_7 s_4 = 0 \quad (25)$$

Just looking for a zero crossing of this function should work but in practice there are often spurious results. The reason is that sign changes occur when the function changes from plus to minus infinity at certain values of α . These appear like spurious zero crossings when plotted versus α . A better approach is to define an error function

$$E(\alpha) = \left(\frac{Q_1 + Q_2 c_2 + Q_3 s_2 + Q_4 c_3 + Q_5 s_3 + Q_6 c_4 + Q_7 s_4}{|Q_1| + |Q_2 c_2| + |Q_3 s_2| + |Q_4 c_3| + |Q_5 s_3| + |Q_6 c_4| + |Q_7 s_4|} \right)^2 = 0 \quad (26)$$

Clearly this function is always positive and bounded by unity. We carry out a scan in α and look for that value for which $E(\alpha)$ has a minimum corresponding to $E(\alpha) = 0$. Our scanning procedure is straightforward, although somewhat “brute force” in nature. It is a two step process. First we perform a fine scale scan over a hundred points to bracket the lowest α corresponding to minimum in $E(\alpha)$ with $|E(\alpha)| \leq \text{Tol} \sim 10^{-3}$. Second, we then use MATLAB’s standard minimizing option to find the actual α to whatever accuracy is desired, typically 6 significant figures. The choice of a “brute force” procedure is made to keep the search algorithm robust.

Even so, the numerical determination of α and the expansion coefficients, is very fast with α typically calculated to 6 figure accuracy (although this can easily be increased). This represents the numerical solution to the Grad-Shafranov equation. The CPU times, with no attempt at numerical optimization, depend only weakly on how many terms are maintained in the series for $C_n(x)$ and $S_n(x)$. For typical inverse aspect ratios $\varepsilon \sim 0.35$, approximately 10 terms are required for 5 – 6 significant figure accuracy in ψ , sufficient for practical applications. The CPU time is typically 0.5 seconds. For 15 significant figure accuracy, the number of terms increases to about 25

while the CPU time is about the same (a nice feature of MatLab linear algebra calculations). Even in an extreme spherical tokamak case with $\varepsilon = 0.75$, 220 terms produce 15 figure accuracy with the CPU time again about the same. Overall, the ultimate accuracy of the solution is determined by the accuracy of the eigenvalue, not the accuracy of the expansion functions. Specifically, the numerical solutions satisfy the Grad-Shafranov equation to a comparable number of significant figures as maintained in the expansion functions, while the boundary condition accuracy is comparable to the number of significant figures in α .

Since the CPU times are so short, we admittedly use overkill, and for simplicity always maintain 150 terms in the series. Overall, the total CPU time required to calculate an equilibrium is largely determined by the amount of post-processing desired. Typically, the evaluations of α , the expansion coefficients, a flux surface plot, and the key parameters of physical interest require about 2 seconds of CPU time. This corresponds to a single evaluation of $q(\psi)$ at the 95% surface. The post-processing can increase to about 1 minute if a large number of ultra-high resolution $q(\psi)$ surfaces is required. Note also, that to carry out due diligence with respect to verification of our numerical code, we have compared results against an established Grad-Shafranov solver “FLOW” that includes plasma flow (Guazzotto et. al. 2004). In the limit of zero flow the agreement is very good, thereby verifying our numerical implementation.

- **Example: Circle, Ellipse, Elongated D, Inverse D**

To demonstrate the solutions we calculate and plot the flux surfaces for five model plasma surfaces: (a) a circle, (b) an ellipse, (c) an elongated D, (d) a high triangularity D, and (e) and an inverse D. Also illustrated are the midplane plots for the pressure and current density, normalized to their maximum values. The vertical axis is Z / a while the horizontal axis is R / R_0 . The circle and the ellipse are just reference cases to demonstrate credibility plus versatility of the procedure. The elongated, high triangularity, and inverse D shapes are more relevant to modern tokamaks. All

correspond to special choices of the Miller profile parameters. The actual post processing physical parameters of interest are presented in Sec. 6, after they have been defined. The flux surfaces and midplane plots are illustrated in Figs. 1 – 5 with the corresponding specific profile parameters listed below in Table 1.

Plasma Shape	ε	κ	δ	ν
Circle, standard ε , standard β_p	0.33	1	0	1
Ellipse, small ε , standard β_p	0.25	2	0	1
Elongated D, standard ε , low β_p	0.33	1.8	0.4	0.3
High triangularity D, large ε , standard β_p	0.4	2	0.75	1
Inverse D, standard ε , low β_p	0.33	1.9	- 0.6	0.5

Table 1 Input parameters for smooth, up-down symmetric, limiter tokamaks

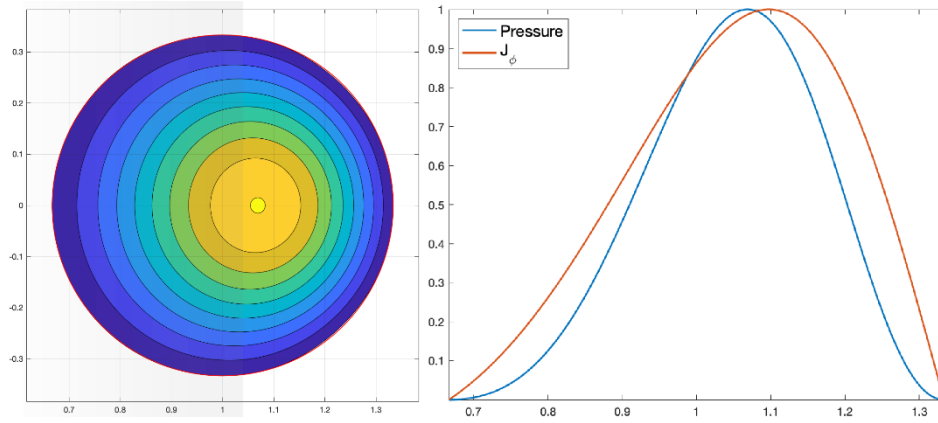


Figure 1 Circle: $\varepsilon = 0.33, \kappa = 1, \delta = 0, \nu = 1$

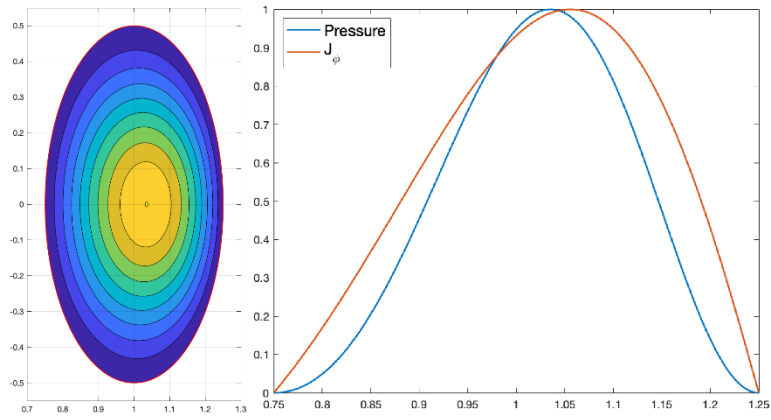


Figure 2 Ellipse: $\varepsilon = 0.25, \kappa = 2, \delta = 0, \nu = 1$

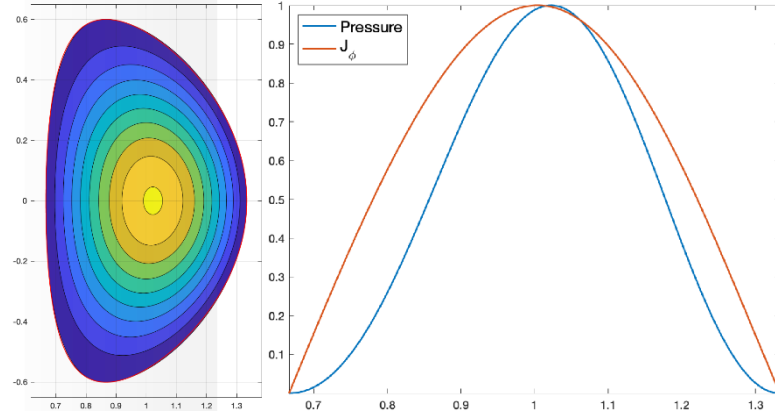


Figure 3 Elongated D: $\varepsilon = 0.33, \kappa = 1.8, \delta = 0.4, \nu = 0.3$

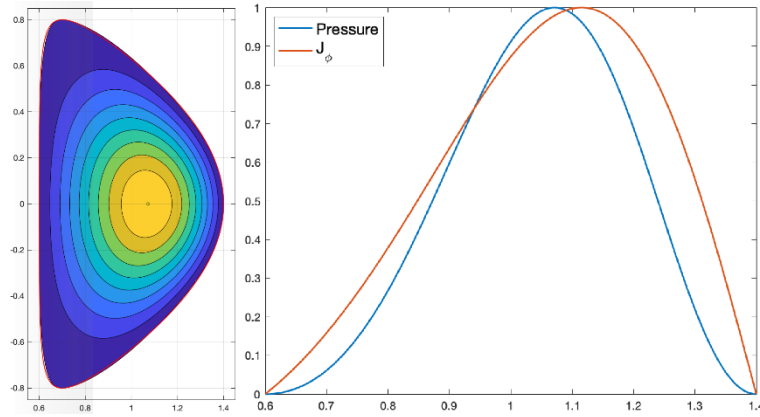


Figure 4 High triangularity D: $\varepsilon = 0.4, \kappa = 2, \delta = 0.75, \nu = 1$

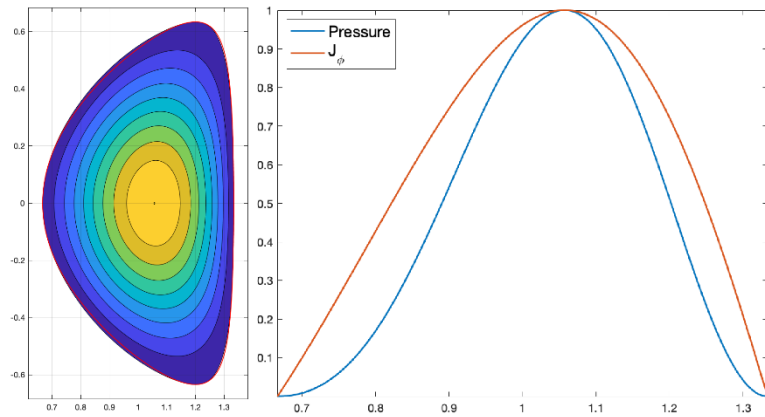


Figure 5 Inverse D: $\varepsilon = 0.33, \kappa = 1.9, \delta = -0.6, \nu = 0.5$

There are two main points to observe. First, flux surfaces (c) – (e) have reasonable, realistic shapes, quite comparable to existing tokamak experiments. Similarly for the midplane profiles. Second, plotted as a red curve is the model Miller surface for each configuration. We see that the surfaces for the analytic equilibria closely match the Miller surface. The analysis for smooth limiter surfaces appears to work quite well over a wide range of parameters.

4. Up-down symmetric double null divertor equilibria

The generalization of the analysis to include the treatment of double null divertor systems is straightforward. Only two modifications are necessary. First, a new X-point model surface must be introduced, enabling us to obtain modified curvature conditions at the inner and outer midplane points. A new surface is needed because the Miller shape does not allow X-points. Using its midplane curvatures resulted in flux surfaces that were overly distorted at the desired X-points. Second the curvature constraint at the maximum point must be replaced by the X-point constraint that B_r vanish at this point.

- **The double null model surface**

A simple form for the shape of a double null surface consists of two intersecting ellipses. Note that when the current density vanishes on the plasma surface then not only must ψ_x and ψ_y vanish simultaneously at the X-point, but there is a further constraint that must also be imposed. Specifically, the ellipses must intersect perpendicular to each other. The double null model surface satisfying these constraints can be expressed in terms of an angle-like parameter θ and is defined by

Inboard ellipse

$$Z_s = a\kappa_0 \sin \theta \quad R_s = R_0 + a \left[x_1 + (1 + x_1) \cos \theta \right] \quad \pi - \theta_0 \leq \theta \leq \pi + \theta_0 \quad (27)$$

Outboard ellipse

$$Z_s = a\kappa_0 \sin \theta \quad R_s = R_0 + a \left[-x_2 + (1 + x_2) \cos \theta \right] \quad -\theta_0 \leq \theta \leq \theta_0 \quad (28)$$

Here,

$$\begin{aligned} \frac{\kappa_0}{\kappa_X} &= \frac{1}{(1 - \xi^2)^{1/2}} \\ x_1 &= \frac{\xi - \delta_X}{1 - \xi} \\ x_2 &= \frac{\xi + \delta_X}{1 - \xi} \\ \theta_0 &= \tan^{-1} \left[\frac{(1 - \xi^2)^{1/2}}{\xi} \right] \\ \xi &= \frac{(1 - \delta_X^2)^{1/2}}{\kappa_X - (1 - \delta_X^2)^{1/2}} \end{aligned} \quad (29)$$

and κ_X, δ_X at the X-point are known inputs replacing κ, δ for the smooth surface.

Observe that for real solutions to exist we require $0 \leq \xi \leq 1$. The left limit is always satisfied but the right limit requires that

$$\kappa_X > 2(1 - \delta_X^2)^{1/2} \quad (30)$$

This constraint arises because in low elongation, circular-like plasmas it is difficult to shrink the X-point angle to $\pi / 2$. In practice if we assume $\kappa_X > 2$ the condition is

automatically satisfied, and this is not a very strong practical limitation. A cleverer choice of model surface could lower this limit if important.

- **The $B_R = 0$ constraint**

In a double null system there is no longer a curvature constraint at the X-point as there is for a smooth surface. Instead, we replace the curvature constraint given by term (g) in Eq. (23) with

$$\psi_y(-x_X, \kappa_X) = 0 \quad x_X = \delta_X + (\varepsilon / 2)(1 - \delta_X^2) \quad (31)$$

- **The full set of double null constraints**

The full set of double null constraints is summarized below

(a) $\psi(-1, 0) = 0$	Flux surface at inner midplane
(b) $\psi(1, 0) = 0$	Flux surface at outer midplane
(c) $\psi(-x_X, \kappa_X) = 0$	Flux surface at X-point
(d) $\psi_x(-x_X, \kappa_X) = 0$	$B_z = 0$ at X-point
(e) $\frac{\psi_{yy}(-1, 0)}{\psi_x(-1, 0)} = -\Lambda_1$	Curvature at inner midplane
(f) $\frac{\psi_{yy}(1, 0)}{\psi_x(1, 0)} = \Lambda_2$	Curvature at outer midplane
(g) $\psi_y(-x_X, \kappa_X) = 0$	$B_R = 0$ at X-point

In this equation, a short calculation shows that the values of Λ_1, Λ_2 for the intersecting ellipse model are given by

$$\Lambda_1 = \frac{(1 - \varepsilon)(1 - \delta_X)(1 + \xi)}{\kappa_X^2}$$

$$\Lambda_2 = \frac{(1 + \varepsilon)(1 + \delta_X)(1 + \xi)}{\kappa_X^2}$$
(33)

Our expansion for $\psi(x, y)$ maintains the same form as Eq. (17). The constraint relations determining the expansion coefficients are nearly identical to the smooth surface constraints except for the $B_R = 0$ replacement and the new values for Λ_1, Λ_2 . Thus, the same solution procedure with similar CPU timing can be used to calculate equilibria.

- **Examples: Standard Tokamak, Spherical Tokamak**

Double null divertor analytic equilibria are illustrated for two examples: (a) a tokamak with standard aspect ratio, low β_p and (b) a spherical tokamak with high aspect ratio, high β_p . The flux surfaces and midplane plots are illustrated in Figs. 6 and 7. The input parameters are listed in Table 2.

Plasma Shape	ε	κ_X	δ_X	ν
Double null, standard ε , low β_p	0.33	2	0.5	0.4
Double null, spherical tokamak	0.75	2.4	0.8	1.04

Table 2 Input parameters for up-down symmetric, double null divertor tokamaks

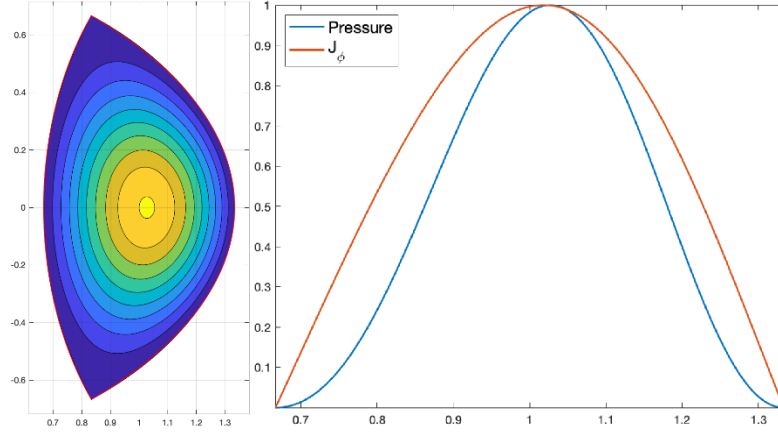


Figure 6 Standard double null: $\varepsilon = 0.33$, $\kappa_X = 2$, $\delta_X = 0.5$, $\nu = 0.4$

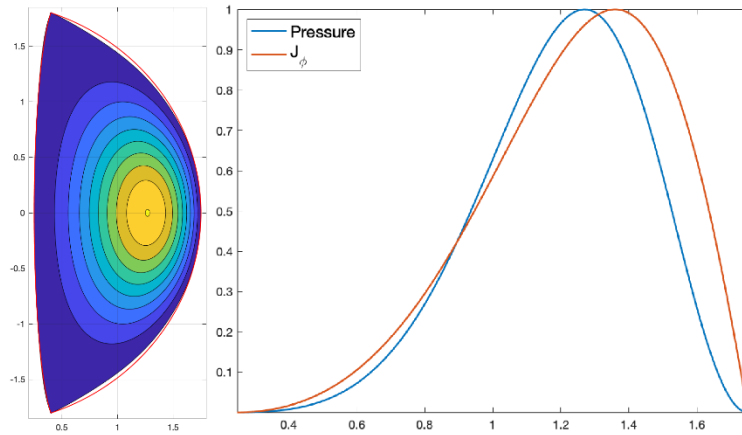


Figure 7 Spherical tokamak: $\varepsilon = 0.75$, $\kappa_X = 2.4$, $\delta_X = 0.8$, $\nu = 1.04$

We again see that the analytic equilibrium model produces realistic looking results, and has no difficulty reproducing exact X-points. Also, the fit of the analytic solutions closely matches the two-ellipse model surface.

5. Up-down asymmetric single null divertor equilibria

The analysis thus far presented can be further generalized to describe an up-down asymmetric single null divertor configuration. This generalization requires combining many of the results already derived. The one main new step is the addition of several additional terms (but not additional separation constants) in the expansion to account for the asymmetry.

- **The single null model surface**

To begin, we introduce a convenient shape for the single null divertor surface that can again be expressed parametrically in terms of an angle-like variable θ . This is a combination of our previous surfaces. The inputs to the shape are κ, δ for the smooth upper half and κ_X, δ_X for the single null lower half. We also need to specify the inverse aspect ratio ε . The shape for the upper half ($0 \leq \theta \leq \pi$) corresponds to the Miller profile

$$Z_s = a\kappa \sin \theta \quad R_s = R_0 + a \cos(\theta + \hat{\delta} \sin \theta) \quad 0 \leq \theta \leq \pi \quad (34)$$

The lower half is subdivided into the two intersecting ellipses model,

$$\begin{aligned} Z_s &= a\kappa_0 \sin \theta & R_s &= R_0 + a[x_1 + (1 + x_1) \cos \theta] & \pi \leq \theta \leq \pi + \theta_0 \\ Z_s &= a\kappa_0 \sin \theta & R_s &= R_0 + a[-x_2 + (1 + x_2) \cos \theta] & -\theta_0 \leq \theta \leq 0 \end{aligned} \quad (35)$$

- **The constraints**

The constraints for an asymmetric single null divertor configuration again involve the flux, the slope, and the curvature at four critical points: outer midplane, inner midplane, upper maximum point, lower X-point. There are, however, some differences

from symmetric systems that are described below. We begin with the flux constraints on $\psi(x, y)$, which are straightforward,

$$\begin{aligned}
(a) \quad \psi(-1, 0) &= 0 && \text{Inner midplane} \\
(b) \quad \psi(1, 0) &= 0 && \text{Outer midplane} \\
(c) \quad \psi(-x_\delta, \kappa) &= 0 && \text{Upper maximum point} \\
(d) \quad \psi(-x_X, -\kappa_X) &= 0 && \text{Lower X-point}
\end{aligned} \tag{36}$$

The slope constraints are modified because dx / dy is no longer automatically zero at the midplane points since the configuration no longer has up-down symmetry. Our model surfaces for the upper and lower sections both require that $dx / dy = 0$ at the outer and inner midplane points, as can be seen from Eqs. (34) and (35). Nevertheless, this requirement must be enforced on our analytic solution since, by construction, $\psi(x, y)$ is not automatically up-down symmetric. A second modification occurs at the lower X-point. Here, it is not actually a slope constraint that applies, but instead the requirement that both components of magnetic field simultaneously vanish. Thus, there are two first derivative constraints at this point. The total first derivative constraints can be written as,

$$\begin{aligned}
(e) \quad \frac{\partial \psi(-1, 0)}{\partial y} &= 0 && \text{Inner midplane} \\
(f) \quad \frac{\partial \psi(1, 0)}{\partial y} &= 0 && \text{Outer midplane} \\
(g) \quad \frac{\partial \psi(-x_\delta, \kappa)}{\partial x} &= 0 && \text{Upper maximum point} \\
(h) \quad \frac{\partial \psi(-\delta_X, -\kappa_X)}{\partial x} &= 0 && \text{Lower X-point} \\
(i) \quad \frac{\partial \psi(-\delta_X, -\kappa_X)}{\partial y} &= 0 && \text{Lower X-point}
\end{aligned} \tag{37}$$

The curvature constraints at the midplane points are also modified. The reason is that the second derivatives $\partial^2 x / \partial y^2$ are different for the upper and lower surfaces. If we imagine a smooth, rather than abrupt transition from one surface to the other, then the curvature constraint reduces to the average of the two separate curvature constraints. Formally, we write $x = (x_{Upper} + x_{Lower}) / 2$ to obtain the midplane curvature constraints. Also, at the X-point a curvature constraint is unnecessary. Consequently, there are three curvature constraints that must be applied, which are given by

$$\begin{aligned}
(j) \quad & \frac{\psi_{yy}(-1,0)}{\psi_x(-1,0)} = -\Lambda_1 && \text{Curvature at inner midplane} \\
(k) \quad & \frac{\psi_{yy}(1,0)}{\psi_x(1,0)} = \Lambda_2 && \text{Curvature at outer midplane} \\
(l) \quad & \frac{\psi_{xx}(-x_\delta, \kappa)}{\psi_y(-x_\delta, \kappa)} = \Lambda_3 && \text{Curvature at top maximum}
\end{aligned} \tag{38}$$

where

$$\begin{aligned}
\Lambda_1 &= \frac{1}{2} \left[\frac{(1-\varepsilon)(1-\hat{\delta})^2}{\kappa^2} + \frac{(1-\varepsilon)(1-\delta_X)(1+\xi)}{\kappa_X^2} \right] \\
\Lambda_2 &= \frac{1}{2} \left[\frac{(1+\varepsilon)(1+\hat{\delta})^2}{\kappa^2} + \frac{(1+\varepsilon)(1+\delta_X)(1+\xi)}{\kappa_X^2} \right] \\
\Lambda_3 &= \frac{\kappa}{(1-\varepsilon\delta)^2(1-\delta^2)}
\end{aligned} \tag{39}$$

All told, there are twelve constraints that must be satisfied by our analytic solution.

- **The single null flux function expansion**

As before, we write the analytic solution as a sum of terms containing four separation constants. The most general solution satisfying the four separation constants constraint can be written as

$$\begin{aligned} \psi(x, y) = & \sum_1^4 \cos(h_n y) [c_n C_n(x) + s_n S_n(x)] \\ & + \sum_1^4 \sin(h_n y) [c_{n+4} C_n(x) + s_{n+4} S_n(x)] \end{aligned} \quad (40)$$

Observe that the expansion in principle contains 16 unknown coefficients whereas our formulation has only 12 constraints. This problem can be resolved by choosing the separation constants in the same way as for the up-down symmetric systems. Specifically, one separation constant is chosen so that $k_1 = 0$ while a second is chosen so that $h_4 = 0$. With these two choices plus the same intermediate separation constants the total number of unknown coefficients is reduced to 12. The counting of constraints and unknown coefficients is now consistent. The modified expansion for the flux can now be written as

$$\begin{aligned} \psi(x, y) = & c_1 \cos(h_1 y) C_1(x) + \sum_2^4 \cos(h_n y) [c_n C_n(x) + s_n S_n(x)] \\ & + c_5 \sin(h_1 y) C_5(x) + \sum_2^3 \sin(h_n y) [c_{n+4} C_n(x) + s_{n+4} S_n(x)] \end{aligned} \quad (41)$$

- **Solution procedure**

The solution procedure is the same as for the symmetric case except that we now have a 12 x 12 set of linear homogeneous algebraic equations with α as the eigenvalue,

$$\vec{\mathbf{A}}(\alpha) \cdot \mathbf{u} = 0 \quad (42)$$

Here, $\mathbf{u} = [c_1, c_2, s_2, c_3, s_3, c_4, s_4, c_5, c_6, s_6, c_7, s_7]$. We again set $c_1 = 1$, solve the first 11 constraint equations for the remaining c_j, s_j and then iterate the value of α until the 12th equation is satisfied. The equilibrium CPU time is only slightly changed, increasing from about 0.5 seconds to about 1 second for an equilibrium calculation where 150 terms are maintained in the series for C_n, S_n .

- **Examples: Standard Tokamak, High β_p Tokamak**

Single null divertor analytic equilibria are illustrated for two examples: (a) a tokamak with standard ε , standard β_p and (b) a tokamak with high β_p , small ε . The flux surfaces and midplane plots are illustrated in Figs. 8 and 9. The input parameters are listed in Table 3.

Plasma Shape	ε	κ	δ	κ_X	δ_X	ν
Single null, standard ε , standard β_p	0.33	1.6	0.4	2	0.5	1
Single null, small ε , high β_p	0.25	1.8	0.6	2.1	0.8	2.1

Table 3 Input parameters for up-down asymmetric, single null divertor tokamaks

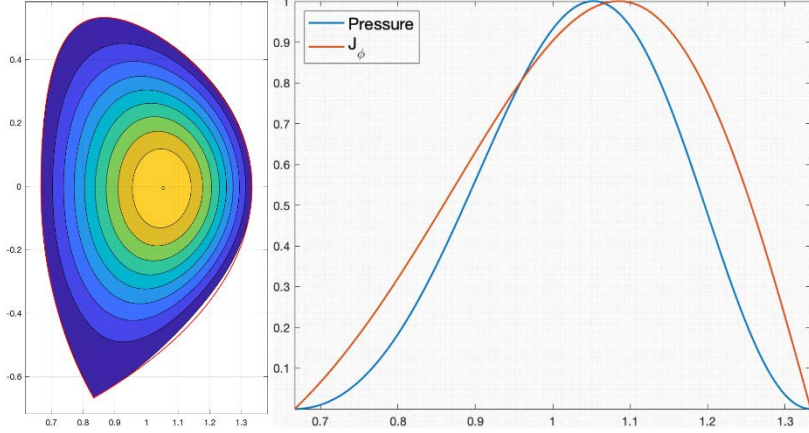


Figure 8 Standard single null: $\varepsilon = 0.33$, $\kappa = 1.6$, $\delta = 0.4$, $\kappa_X = 2$, $\delta_X = 0.5$, $\nu = 1$

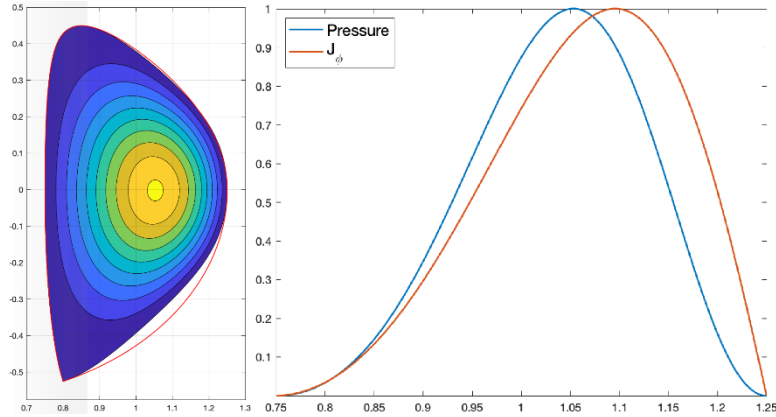


Figure 9 High β_p single null: $\varepsilon = 0.25$, $\kappa = 1.8$, $\delta = 0.6$, $\kappa_X = 2.1$, $\delta_X = 0.8$, $\nu = 2.1$

Once again, we see that the analytic solutions have no difficulty generating realistic single null divertor flux surfaces. The outer surfaces are quite close to the two-ellipse model surface and the midplane profiles smoothly approach zero on the surface.

6. Plasma parameters

The examples presented have shown that our analysis produces realistic flux surfaces over a wide range of interesting tokamak plasma configurations. In addition to flux

surface plots, the results include analytic expressions for the flux $\psi(x, y)$ normalized so that $\psi(\text{axis}) = 1$, its first and second derivatives, and a value for the eigenvalue α . We can use these results to evaluate important plasma parameters of physical interest. To carry out this task several additional input quantities must be specified. A list of the original input parameters plus the new post-processing parameters is given below.

Initial equilibrium parameters

- | | | | |
|-----|--------------------|--|------|
| (a) | ε | Inverse aspect ratio | |
| (b) | κ, κ_X | Elongation | |
| (c) | δ, δ_X | Triangularity | (43) |
| (d) | ν | Parameter approximately equal to β_p | |

Post-processing parameters

- | | | | |
|-----|-------|------------------------------------|------|
| (e) | R_0 | Major radius | |
| (f) | B_0 | Vacuum toroidal field at $R = R_0$ | (44) |
| (g) | q_0 | Safety factor on the magnetic axis | |

With these as inputs, we can evaluate the plasma parameters of interest. It is convenient for mathematical compactness to express the results in terms of β_0 , the toroidal beta on axis (i.e. $\beta_0 = 2\mu_0 p_0 / B_0^2$) rather than q_0 . However, there is a one-to-one relation between q_0 and β_0 that can easily be derived without the need for any iteration on the equilibrium parameters. The explicit relation between q_0 and β_0 is given at the end of this subsection. The desired plasma parameters are as follows.

Plasma pressure on axis p_0

$$p_0 = \beta_0 \left(\frac{B_0^2}{2\mu_0} \right) \quad (45)$$

Plasma diamagnetism $\delta B / B_0$

$$\frac{\delta B}{B_0} = \frac{\beta_0(1 + \varepsilon^2)}{2} \left(\frac{1 - \nu}{\nu} \right) \quad (46)$$

Magnetic flux on axis Ψ_0

$$\Psi_0 = \frac{\varepsilon B_0 R_0^2}{\alpha} \left(\frac{\beta_0}{\nu} \right)^{1/2} \quad (47)$$

Volume averaged toroidal beta β_T

$$\beta_T = \frac{2\mu_0 \langle p \rangle_V}{B_0^2} = \beta_0 \frac{\int \psi^2 dx dy}{\int dx dy} \quad (48)$$

Volume averaged poloidal beta β_P

$$\beta_P = \frac{2\mu_0 \langle p \rangle_V}{\langle B_P^2 \rangle_V} = \frac{2\mu_0 \langle p \rangle_V}{\langle 2\mu_0 p + (F^2 / R_0^2 - B_0^2) / r \rangle_V} = \frac{\nu \int \psi^2 dx dy}{\int \left(\frac{1 + \nu \hat{\varepsilon} x}{1 + \hat{\varepsilon} x} \right) \psi^2 dx dy} \quad (49)$$

Toroidal plasma current I

$$\mu_0 I = \mu_0 \int_A J_\phi dA = \varepsilon B_0 R_0 \alpha \left(\frac{\beta_0}{\nu} \right)^{1/2} \int \left(\frac{1 + \nu \hat{\varepsilon} x}{1 + \hat{\varepsilon} x} \right) \psi dx dy \quad (50)$$

Normalized internal inductance per unit length l_i

$$l_i = \frac{2L_i}{\mu_0 R_0} = \frac{2}{\mu_0^2 I^2 R_0} \int B_P^2 d\mathbf{r} = \frac{4\pi}{\alpha^2} \frac{\int \left(\frac{1 + \nu \hat{\epsilon} x}{1 + \hat{\epsilon} x} \right) \psi^2 dx dy}{\left[\int \left(\frac{1 + \nu \hat{\epsilon} x}{1 + \hat{\epsilon} x} \right) \psi dx dy \right]^2} \quad (51)$$

The kink safety factor q_* ($\kappa = \kappa_{95}$ for divertor surfaces)

$$q_* = \frac{2\pi a^2 B_0}{\mu_0 R_0 I} \left(\frac{1 + \kappa^2}{2} \right) = \frac{\pi \varepsilon}{\alpha} \left(\frac{\nu}{\beta_0} \right)^{1/2} \frac{1 + \kappa^2}{\int \left(\frac{1 + \nu \hat{\epsilon} x}{1 + \hat{\epsilon} x} \right) \psi dx dy} \quad (52)$$

The local safety factor $q(\psi)$

$$q(\psi) = \frac{F(\psi)}{2\pi} \int \frac{dl}{R^2 B_P} = \frac{F(\psi)}{R_0 B_0} \left(\frac{\nu}{\beta_0} \right)^{1/2} \frac{\varepsilon \alpha}{2\pi} \oint \left(\frac{x_\theta^2 + \rho y_\theta^2}{\psi_y^2 + \rho \psi_x^2} \right)^{1/2} \frac{d\theta}{r} \quad (53)$$

Safety factor on axis q_0 and inverse relation $\beta_0 = \beta_0(q_0)$

$$q_0 = \left[\frac{B_\phi}{(\Psi_{RR} \Psi_{ZZ})^{1/2}} \right]_{\Psi=\Psi_0} = \left[\frac{F(\psi) \left(\frac{\nu}{\beta_0} \right)^{1/2}}{R_0 B_0} \frac{\varepsilon \alpha}{r(\psi_{xx} \psi_{yy})^{1/2}} \right]_{\psi=1} \quad (54)$$

or

$$\beta_0 = \frac{\nu \varepsilon^2 \alpha^2}{q_0^2 (r^2 \psi_{xx} \psi_{yy})_{\psi=1} - (1 + \varepsilon^2)(1 - \nu) \varepsilon^2 \alpha^2}$$

In these expressions recall that $r(x) = 1 + \varepsilon^2 + 2\varepsilon x$. Also, note from Eq. (54) that the ratio β_0 / ν is finite as $\nu \rightarrow 0$ so there is no difficulty taking this limit. The plasma parameters of interest have now been defined.

As examples we have evaluated the dimensionless parameters β_T , β_P , l_i , q_{95} , and q_* for the test cases previously presented, assuming that $q_0 = 1$. Also given are the corresponding eigenvalues α in truncated form. The actual α values are accurate to at least 6 significant figures. Lastly, keep in mind that $q_{95} = q(\psi = 0.05)$. The plasma parameters are listed in Table 4.

Plasma Shape	β_T	β_P	l_i	q_{95}	q_*	α
Circle, standard ε , standard β_P	0.014	1	1.04	3.21	2.88	2.38
Ellipse, standard ε , standard β_P	0.018	1	0.85	3.32	3.04	1.88
Elongated D, standard ε , low β_P	0.0084	0.27	0.85	3.84	2.90	1.96
High triangularity D, large ε , high β_P	0.024	1	0.91	6.82	4.71	2.05
Inverse D, small ε , low β_P	0.014	0.49	0.97	3.12	3.08	1.91
Double null, standard ε , low β_P	0.011	0.38	0.86	3.74	2.65	1.96
Double null, spherical tokamak	0.041	1.05	0.97	18.2	5.57	1.90
Single null, standard ε , standard β_P	0.020	1	0.93	4.45	3.05	2.04
Single null, small ε , high β_P	0.018	2.16	1.00	6.17	3.71	2.09

Table 4 Dimensionless plasma parameters for the test examples

We observe that the analytic equilibria have no difficulty modeling configurations covering a wide range of operating space for smooth, double null, and single null plasmas. One interesting value worth mentioning is $q_{95} = 18.2$ for the high β_P spherical tokamak. This high value occurs because the inboard poloidal magnetic field is very small because of the high β_P . The implication is that a separatrix is closely approaching the inboard midplane, corresponding to the equilibrium beta limit.

7. Conclusions

We have derived simple, general, realistic, robust, analytic, tokamak equilibria which are solutions to the Grad-Shafranov equation. They apply to a wide range of configurations: smooth surface, double null divertor, single null divertor, arbitrary $\varepsilon, \kappa, \delta, \beta_T, \beta_p$. Simple expressions for the plasma parameters of interest have also been derived. The model provides analytic expressions for the flux and its first and second derivatives. A simple code has been developed that typically takes on the order of two seconds to plot the flux surfaces and evaluate the plasma parameters of interest. The code is available to all interested readers. The code can also switch from a lower null to an upper null divertor, or to a smooth surface with different upper and lower shapes. These are trivial changes and as such there has been no need to explicitly discuss them in the text.

This first paper assumes simple but realistic boundary constraints in which the pressure, pressure gradient, and current density all vanish on the plasma surface. The follow-on paper generalizes the analysis to include pedestals in these same quantities. It also includes the highly localized fraction of the bootstrap current appearing at the plasma edge in the presence of a density pedestal. A further generalization allows toroidal plasma flow. Again, all of these new effects are included in simple, analytic solutions to the Grad-Shafranov equation (including flow modifications when appropriate).

Funding

This work supported by the Department of Energy – Fusion Energy Science (L.G., grant number DE-SC0014196), (J.P.F., grant number DE-FG02-91ER54109).

Declaration of Interests.

The authors report no conflict of interest.

Appendix A

Solution of the X_n Equation

The goal of Appendix A is to obtain a fast and accurate solution for the X_n equation repeated here for convenience,

$$\begin{aligned}
 (1 + \hat{\varepsilon}x) \frac{d^2 X_n}{dx^2} + [k_n^2 + \lambda^2 x] X_n &= 0 & -1 \leq x \leq 1 \\
 k_n^2 &= \alpha^2 - \frac{h_n^2}{1 + \varepsilon^2} \\
 \lambda^2 &= \hat{\varepsilon} \alpha^2 \nu
 \end{aligned} \tag{A1}$$

The basic idea is to exploit the fact that for small ε the problem reduces to one in which the solutions are simple cosines and sines. Several steps are required to obtain a useful and simple power series representation of the solution which converges rapidly.

There are two solutions, both regular in the domain of interest. Straightforward application of the method of Frobenius shows that one solution behaves like $C_n(x) = a_0 + \dots$ for small x . The other solution behaves like $S_n(x) = b_1 x + \dots$. We thus obtain the two solutions by expanding

$$\begin{aligned}
 C_n(x) &= \sum_{m=0}^{\infty} [\hat{a}_m x^m \cos(k_n x) + \hat{b}_m x^m \sin(k_n x)] && \text{Cosine-like expansion} \\
 \hat{a}_0 &= 1 \quad \hat{a}_1 = \hat{a}_2 = 0 \quad \hat{b}_0 = \hat{b}_1 = \hat{b}_2 = 0 \\
 S_n(x) &= \sum_{m=0}^{\infty} [\tilde{a}_m x^m \cos(k_n x) + \tilde{b}_m x^m \sin(k_n x)] && \text{Sine-like expansion} \\
 \tilde{a}_0 &= \tilde{a}_1 = \tilde{a}_2 = 0 \quad \tilde{b}_0 = 1 \quad \tilde{b}_1 = \tilde{b}_2 = 0
 \end{aligned} \tag{A2}$$

We substitute each expansion into Eq. (A1). This leads to two types of terms for both the cosine-like and sine-like expansions, one proportional to $\cos(k_n x)$, the other to $\sin(k_n x)$. We then set each coefficient to zero which yields the desired recursion

relations. Obtaining these relations requires a small amount of algebra. The recursion relations are identical for both expansions, although the nonzero starting coefficients are different. The results are summarized below.

$$\begin{aligned}
a_m &= -\frac{1}{m(m-1)} \left[\hat{\varepsilon}(m-1)(m-2)a_{m-1} + (\lambda^2 - \hat{\varepsilon}k_n^2)a_{m-3} \right. \\
&\quad \left. + 2(m-1)k_n b_{m-1} + 2\hat{\varepsilon}(m-2)k_n b_{m-2} \right] \\
b_m &= -\frac{1}{m(m-1)} \left[\hat{\varepsilon}(m-1)(m-2)b_{m-1} + (\lambda^2 - \hat{\varepsilon}k_n^2)b_{m-3} \right. \\
&\quad \left. - 2(m-1)k_n a_{m-1} - 2\hat{\varepsilon}(m-2)k_n a_{m-2} \right]
\end{aligned} \tag{A3}$$

In terms of typical values for the parameters, we find that $k_n \sim 2$. Also needed for the analysis are derivatives of the functions. These can be easily obtained and are given by,

$$\begin{aligned}
C'_n(x) &= \sum_{m=0}^{\infty} \left[(-k_n \hat{a}_m x^m + m \hat{b}_m x^{m-1}) \sin(k_n x) + (k_n \hat{b}_m x^m + m \hat{a}_m x^{m-1}) \cos(k_n x) \right] \\
S'_n(x) &= \sum_{m=0}^{\infty} \left[(-k_n \tilde{a}_m x^m + m \tilde{b}_m x^{m-1}) \sin(k_n x) + (k_n \tilde{b}_m x^m + m \tilde{a}_m x^{m-1}) \cos(k_n x) \right] \\
C''_n(x) &= -\frac{k_n^2 + \lambda^2 x}{1 + \hat{\varepsilon}x} C_n(x) \\
S''_n(x) &= -\frac{k_n^2 + \lambda^2 x}{1 + \hat{\varepsilon}x} S_n(x)
\end{aligned} \tag{A4}$$

References

- Atanasiu, C. V., Lackner, K., & Miron, I. G. 2004 Analytical solutions to the Grad–Shafranov equation *Phys. of Plasmas* **11**, 3510
- Cerfon, A. J. & Freidberg, J. P. 2010 “One size fits all” analytic solutions to the Grad–Shafranov equation *Phys. of Plasmas* **17**, 032502.
- De Menna, L. 1977 Exact solutions of the axisymmetric plasma equilibrium equation *Nucl. Fusion* **17**, 443
- Goedbloed, J. P. 1984 Some remarks on computing axisymmetric equilibria, *Comput. Phys. Commun.* **31** (2–3) 123–135
- Grad, H. & Rubin, H. 1958 *Proc. of the 2nd United Nations Conference on the Peaceful Use of Atomic Energy*, United Nations, Geneva **31**, 190
- Guazzotto, L., Betti, R., Manickam, J., & Kaye, S. 2004 Numerical study of tokamak equilibria with arbitrary flow *Phys. of Plasmas* **11**, 604
- Guazzotto, L. & Freidberg, J. P. 2007 A family of analytic equilibrium solutions for the Grad–Shafranov equation *Phys. of Plasmas* **14**, 112508.
- Herrnegger, F. 1972 *Proceedings of 5th European Conference on Controlled Fusion and Plasma Physics*, Grenoble, **I**, 26.
- LoDestro, LL & Pearlstein, L. D. 1994 On the Grad–Shafranov equation as an eigenvalue problem with implications for q solvers, *Phys. Plasmas* **1**, 90
- Lüst, R. & Schlüter, A. 1957 *Z. Naturforsch.* A 12a, 8501957.

- Maschke, E. K. 1972 Exact solutions of the MHD equilibrium equation for a toroidal plasma *Plasma Phys.* **15**, 535
- McCarthy, P. J. 1999 Analytical solutions to the Grad–Shafranov equation for tokamak equilibrium with dissimilar source functions *Physics of Plasmas* **6**, 3554
- Miller, R. L., Chu, M. S., Greene, J. M., Lin-Liu, Y. R., and Waltz, R. E. 1998 Noncircular, finite aspect ratio, local equilibrium model *Phys. Plasmas* **5**, 973
- Pataki, A., Cerfon, A. J., Freidberg, J. P., Greengard, L. & O'Neil, M. 2013 A fast, high-order solver for the Grad-Shafranov equation, *Journal of Computational Physics* **28** 243
- Shafranov, V. D. 1966 *Reviews of Plasma Physics*, Consultants Bureau New York-London **2**, 103.
- Shi, B. 2005 Analytic description of high poloidal beta equilibrium with a natural inboard poloidal field null *Phys. of Plasmas* **12**, 122504
- Shi, B. 2009 Exact single-null diverted tokamak equilibria *Plasma Physics and Controlled Fusion* **51**, 105008
- Solov'ev, L. S. 1968 *Sov. Phys. JETP* **26**, 400
- Takeda, T. & S. Tokuda, S. 1991 Computation of MHD equilibrium of Tokamak plasma, *J. Comput. Phys.* **93** (1) 1–107
- Todd, A. M. M., Manickam, J., Okabayashi, M., Chance, M. S., Grimm, R. C., Greene, J. M., and Johnson, J. L. 1979 Dependence of ideal-MHD kink and ballooning modes on plasma shape and profiles in tokamaks *Nucl. Fusion* **19**, 743
- Weening, R. H. 2000 Analytic spherical torus plasma equilibrium model *Phys. of Plasmas* **7**, 3654

Zheng, S. B., Wooten, A. J., & Solano, E. R. 1996 Analytical tokamak equilibrium for shaped plasmas *Phys. of Plasmas* **3**, 117.