



War Eagle
fly down the field,
War Eagle
never to yield.
FEARS AND TRUE,
and blue!
Go
GIVE 'EM
**ON TO VICTORY
STRIKE UP THE BAND!**
WAR EAGLE
WILL FOR AUBURN,
POWER OF DIXIELAND!

An illustration of a marching band member in a white uniform with orange and blue accents, running and playing a drum. The member is positioned in the center of the graphic, overlapping the text and musical notation.

AUBURN
UNIVERSITY

CAMPAIGN FOR THE AUBURN UNIVERSITY BANDS

Band Practice Facility



“Our band members want to be great ambassadors for Auburn University in every single way. That means being the quintessential Auburn man and Auburn woman. They live The Auburn Creed in every aspect of their lives...”

“On to victory, strike up the band!” They are the familiar lyrics of our beloved anthem that excite masses of Auburn faithful. You’ll never forget the first time you heard the sound of that riveting fight song performed by the Auburn University Marching Band. It is the trademark of the Auburn University Band Program and it unites us as the Auburn family.

The sound is perfection. And behind it stand the hundreds of Auburn students who have volunteered countless hours to make the music just right. While others enjoy the last few carefree days of summer, Auburn University Marching Band students work in the grueling summer heat to memorize music and refine their marching skills to add a spectacular component to the Auburn football season.

A VENERABLE PROGRAM

The marching band has built an international reputation for its performances on the field, support for its sports teams, and ambassadorship of Auburn University. The award-winning band has performed stateside and internationally and was named the 2004 recipient of the Sudler Intercollegiate Marching Band Trophy, the nation’s highest and most coveted award for college and university marching bands.

Likewise, Auburn’s Symphonic Band, another component of the Auburn Band Program, is an award-winning, world-renowned group. Members of the symphonic band invest hours in rehearsal time to hone their sound in becoming concert-ready.

Since 1973, the band program has been based out of Goodwin Music Hall, which was built to accommodate a marching band of 250 members. Today, the Auburn University Marching Band boasts a membership of 380, the largest in university history. This significant growth has led university administrators to consider a new home for the band program. In 2010, the university designated a portion of land on the west side of campus as a new permanent practice field for the marching band. Plans are now underway to build a new band hall facility, which will provide the marching band, the symphonic band, and the entire band program with state-of-the-art rehearsal space and adequate climate-controlled storage for all of its uniforms, equipment and props.

“When the Auburn University Marching Band hits the field during a game, it fills me with an overwhelming sense of pride. I am asking for your help in supporting our efforts to provide this much-needed facility because I believe that we have a responsibility to keep our students safe as they carry our banner of pride. Our students deserve our appreciation for honoring the Auburn Spirit every time they strike up the band.”



ANNA GRAMBERG, DEAN
COLLEGE OF LIBERAL ARTS



...To say that I love our students and what they do for our university is an understatement. I have the best job in the world, and it's because of them. The highlight of my day is to come out to the practice field and spend an hour and twenty minutes with them."

— COREY SPURLIN, DIRECTOR OF THE AUBURN UNIVERSITY MARCHING BAND

A NEW HOME

For the first time, the Auburn University Band Program has the opportunity to have a building all its own. It will be the first time in at least 40 years that the marching band's indoor rehearsal space will be located adjacent to its outdoor practice field.

For more than 100 years, Auburn bands have demonstrated excellence in performances all over the world. Whether it's the marching band stepping down the field or the symphonic band giving another masterful performance, Auburn continues its rich musical tradition year after year. The band program provides the soundtrack for the Auburn experience. It is fitting that we are striving to provide this venerable program with a permanent home.

Construction alone is slated to cost \$10 million. Auburn's administration has pledged \$5 million in matching funds if the band program can raise the initial \$5 million. In order to make the plan a reality, the band program is reaching out to all of its alumni, fans and friends to invest in the future of the program and name the rooms and spaces in the new facility.

The designation of a room or area within a new building on Auburn's campus is one of the highest honors that can be bestowed upon a donor. It is Auburn University's wish to commemorate you, or the person or entity of your choosing, for your role in providing much-needed support for the new Auburn University Band Complex and the band programs that will call it home.

BAND PERSONNEL MAKE-UP*

COLLEGE	NO. OF STUDENTS	% OF TOTAL
COLLEGE OF AGRICULTURE	8	2%
COLLEGE OF ARCHITECTURE, DESIGN & CONSTRUCTION	14	4%
COLLEGE OF BUSINESS	26	7%
COLLEGE OF EDUCATION	65	17%
SAMUEL GINN COLLEGE OF ENGINEERING	116	30%
SCHOOL OF FORESTRY & WILDLIFE SCIENCES	4	1%
COLLEGE OF HUMAN SCIENCES	9	2%
COLLEGE OF LIBERAL ARTS	55	14%
SCHOOL OF NURSING	10	3%
HARRISON SCHOOL OF PHARMACY	2	1%
COLLEGE OF SCIENCES & MATHEMATICS	66	17%
COLLEGE OF VETERINARY MEDICINE	1	1%
UNDECIDED	4	1%
TOTAL	380	

*undergraduate students only, (July, 2012)





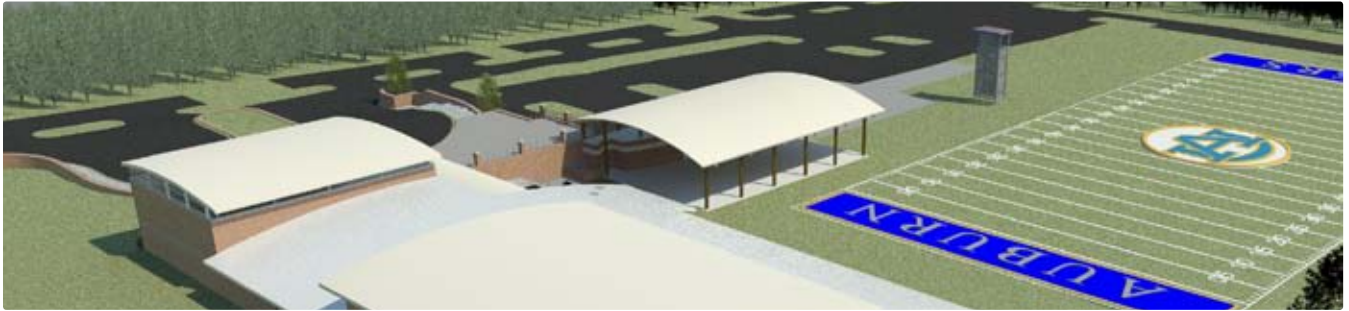
AUBURN UNIVERSITY MARCHING BAND COMPLEX | \$6,000,000

Due to significant growth of the Auburn University Band Program, plans are underway to build a new, innovative band complex, which will add a band rehearsal hall to the existing practice field and outdoor pavilion. The entire complex is estimated at 32,500 square feet, which will include two rehearsal halls totaling more than 5,500 square feet and the 5,500-square-foot pavilion. The rehearsal halls will provide adequate space to accommodate the needs of both the marching and concert bands under one roof. The facility will include climate-controlled storage areas to protect equipment, instruments and uniforms, as well as office space for band faculty and staff, and a music library. The practice field is large enough to simulate the playing surface at Jordan-Hare Stadium and the pavilion gives students shade from the heat and provides shelter during inclement weather. The much-needed new complex will be beneficial to the future of the program as it will aid in the recruitment of talented musicians from various backgrounds and disciplines.



PAVILION | \$1,000,000

Constructed in 2011, the outdoor pavilion provides for the immediate needs of band students while they are rehearsing at the practice field, which is located more than a mile away from their current home in Goodwin Music Hall. With no other buildings currently on site, the 5,500-square-foot pavilion is vital as it provides shelter from rain and inclement weather, restroom facilities, a space to hold sectional rehearsals and a social gathering space for band students as well as band alumni, honor band participants and band service fraternity members.



PRACTICE FIELD | \$1,000,000

Since 2010, Auburn University Marching Band students have been using the new practice field located on the western edge of Auburn's campus. This new practice field provides band members with a full-size practice field that is identical to Pat Dye Field at Jordan-Hare Stadium. What better way to hone your marching skills than to practice on an exact replica of your performance space! Because it is full-sized and identical to Jordan-Hare, the practice field allows students to perfect their precision marching drills, which require accurate yardage to accomplish.



DIRECTOR'S TOWER | \$300,000

Refining and correcting the precision drills and field work of the marching band requires a bird's-eye view. The Practice Field Director's Tower at the new Marching Band Complex will provide an elevated viewing spot at practices, allowing the band directors to teach and coach drills more effectively.



COURTYARD | \$500,000

The Courtyard area at the new Marching Band Complex will be a beautiful outdoor space designed to unify the Pavilion with the overall architectural design of the rehearsal building. The Courtyard will provide an intimate outdoor gathering place for band families and alumni on game days and during special events.

PLAZA | \$250,000

The Plaza at the new Marching Band Complex will offer visitors a beautiful first impression from the parking lot entrance to the building. The bricked area will connect the circular drive to the building's entrance.

PEDESTRIAN BRIDGE | \$100,000

The Pedestrian Bridge at the new Marching Band Complex is a covered walkway that will lead students and visitors from the complex's circular drive into the building's beautiful and welcoming Atrium entry area.

“I was a member of the Auburn University Marching Band my freshman year, and it offered me an Auburn experience unlike any other. It provided lifelong friendships and irreplaceable experiences. I am proud to be a contributing supporter of the band alumni and am excited to see the advancements that will be made through this practice facility.”



KAY IVEY '67, ALABAMA LT. GOVERNOR AND BAND ALUMNA

irreplaceable experiences

MARCHING BAND REHEARSAL HALL | \$3,000,000

Band officials and university administrators realize the pressing need to provide a facility adequate enough to accommodate the current band and allow for future growth. As part of the new Marching Band Complex, the Marching Band Rehearsal Hall will provide just that. At 5,500 square feet, the new rehearsal hall will seat 400 musicians comfortably while serving as the primary music rehearsal space for the band program. The acoustically sound space will provide practice and performance space for the marching band as well as the pep band, the symphonic band, and honor band festivals. It will also provide—for the first time—adequate space to allow the band’s auxiliary groups to practice indoors. In addition, the rehearsal hall will be a safe haven during times of inclement weather for students who typically practice outdoors. Constructing the new Marching Band Rehearsal Hall allows the band program to move out of its current and confined home in Goodwin Hall and frees up much-needed space in that facility for other growing programs within the Department of Music.



“I will always be so thankful for the opportunity I had to be a part of the Auburn Band family. We learned lifelong lessons about teamwork, attitude, devotion, hard work, and having a commitment to excellence. And we were always so honored to represent Auburn University. I hope that Auburn people everywhere will support the Auburn Band and will get excited about helping make this amazing new home a reality.”



OWEN BAILEY '85, USA CHILDREN'S & WOMEN'S HOSPITAL ADMINISTRATOR, FORMER DRUM MAJOR

Legacy of excellence



CONCERT BAND REHEARSAL HALL | \$1,500,000

The Auburn Band Program boasts a variety of different types of bands—the marching band, the concert band, the symphonic band, the campus band, the basketball pep band and the jazz band. The Concert Band Rehearsal Hall will provide approximately 2,500 square feet of space for all these different groups to practice throughout the year. The large space will provide a practice area for the concert and symphonic bands as well as sectional rehearsal space for the marching, jazz and pep bands and other music ensembles. The Concert Band Rehearsal Hall will also house large percussion instruments and equipment such as timpani, bass drums or marimbas.

spirit & determination

PERCUSSION STUDIO | \$300,000

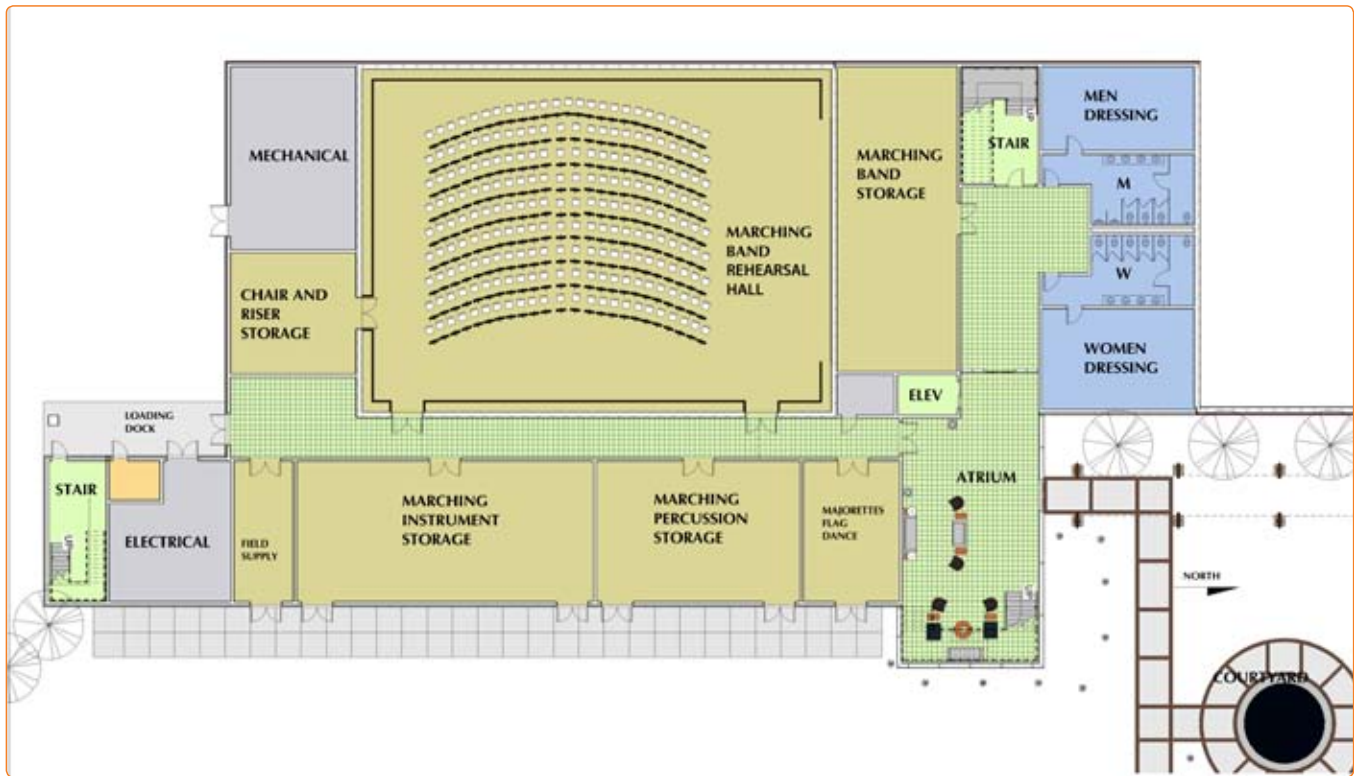
As the heartbeat of the band, percussionists keep the music in rhythm. The new complex has been designed to give these players their own practice space. At 400 square feet, the Percussion Studio will provide rehearsal and lesson space for all percussion students and ensembles.



ATRIUM | \$100,000

The beautiful and open entry space has been designed to add to the overall aesthetic appeal of this new facility. The Atrium area will welcome visitors as they enter the band rehearsal hall.

Interior - First Level



MEN'S & WOMEN'S DRESSING ROOMS | \$25,000 EACH

Providing space for freshening up on brutally hot practice days and changing into band uniforms, designated dressing rooms each at 600 square feet, will be an important part of the new band complex and a necessity for ensuring band members look and feel their best. The marching band rehearses—often early in the morning—each Saturday of a home football game.

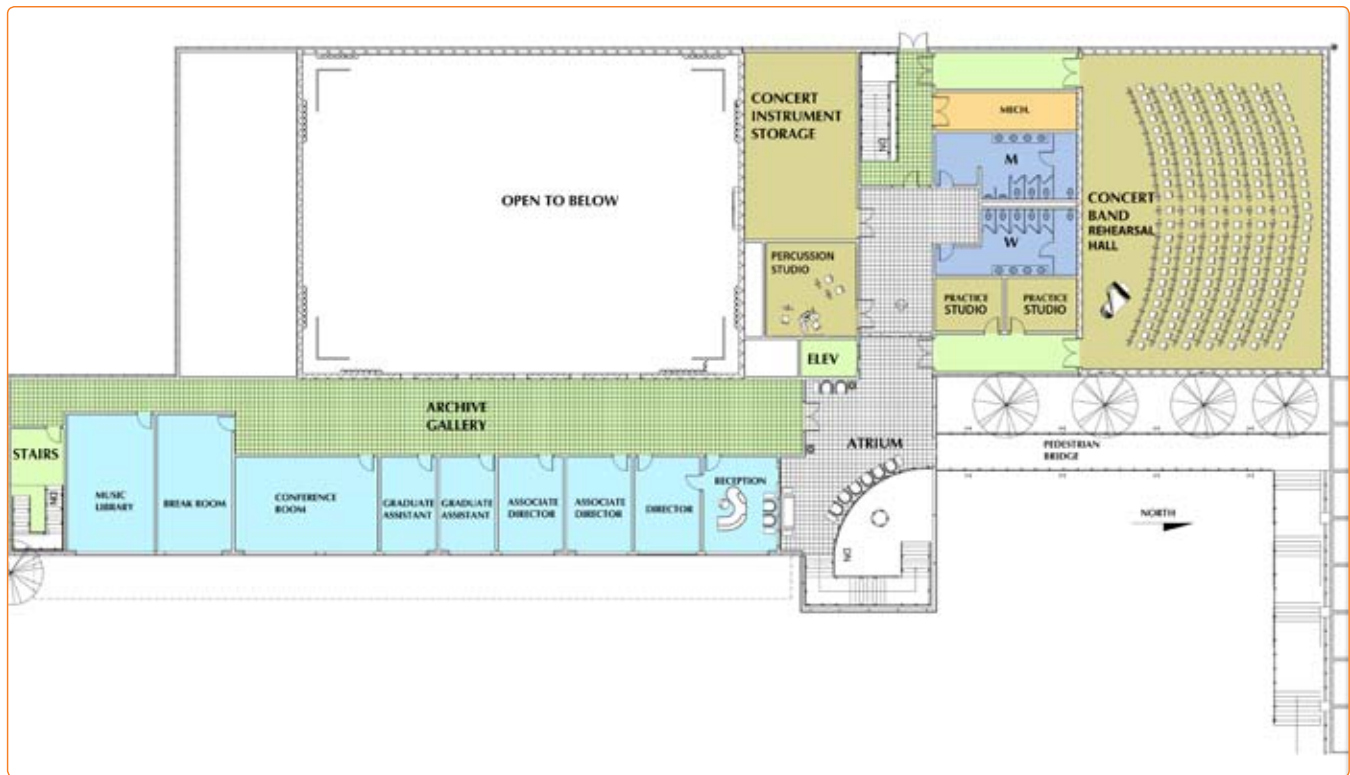
DANCE, FLAG & MAJORETTE TEAM ROOM | \$25,000

The Tiger Eyes are the “visual” ensemble of the Auburn University Marching Band and are comprised of three distinct lines—flags, majorettes and dancers—that present complementary choreography to the band. At 550 square feet, the Dance, Flag and Majorette Team Room will provide storage and gathering space for all three of these auxiliary teams that provide an important component to the Auburn band experience.

STORAGE AREAS (4) | \$25,000 - \$50,000 EACH

Band membership is at its highest in school history. An immense amount of uniforms, instruments, props and collateral gear is required to ensure each show is performed to perfection and each member is outfitted appropriately. Those high membership numbers translate to a lot of equipment and, consequently, a great deal of space required to store that equipment. The new Marching Band Complex will provide four separate adequate and secure areas to store items such as instruments, gear and uniforms, with values in excess of \$1 million.

Interior - Second Level



PRACTICE STUDIOS (2) | \$50,000 EACH

The new band complex will contain two specially designated student practice studios. These spaces can be used by individual students or small groups for rehearsals. The studios have been dynamically designed so that they are acoustically isolated ensuring that rehearsal noise will not interrupt others practicing throughout the building.

ADMINISTRATIVE SUITE & OFFICES | \$50,000 - \$100,000

The Administrative Suite in the new facility will include staff offices, a reception area and a conference room. The 2,500-square-foot area will enhance the band's recruiting efforts by providing a welcoming entrance and waiting area for visiting high school prospects and their parents.

ARCHIVE GALLERY | \$100,000

Throughout the years, the band program has garnered numerous accolades and awards. The Archive Gallery in the new Marching Band Complex will provide a wonderful display area for the band's awards such as the 2004 Sudler Trophy, which is the nation's highest and most coveted award for college and university marching bands. The gallery will also be the perfect place to display various band memorabilia and historical photos—a place to celebrate the rich tradition and history that is the Auburn University Band Program.

MUSIC LIBRARY | \$100,000

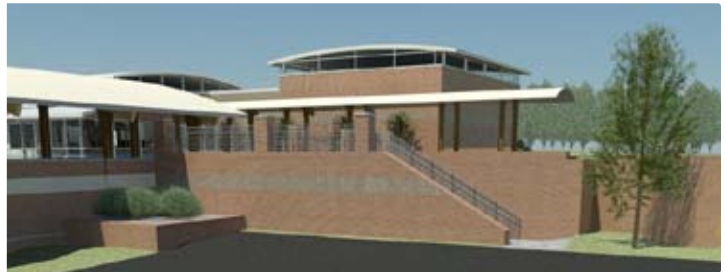
Over the course of the past 100 years, the Auburn University Band Program has amassed a nice collection of music. The new complex will feature a music library that will provide storage for the more than 2,000 pieces of marching band literature and valuable musical scores of concert music that the program keeps on hand.

Wall of Honor



WALL OF HONOR

Building the new Marching Band Complex will not become reality without the dedication of our many alumni, friends and fans. Our Wall of Honor will recognize those who give \$500 or more to help build the new home for the Auburn Band Program. The Wall of Honor will serve as a perpetual reminder for students, faculty, staff, alumni and visitors of those who believed in our project and so generously gave to transform the facility from a dream to a plan, and from a plan to a brick-and-mortar reality.



“Being in the band provided me a ready-made place to belong, and I loved the instant Auburn energy and sense of family. The pride, the energy, the class and the culture is evident in everything they do. We must provide a classroom for the marching band just like any other class we invest in—this particular AU asset just happens to be a very visible face of Auburn University.”

*A Place
to Belong*



MELANIE BARSTAD '75, RETIRED
VP OF JOHNSON & JOHNSON,
AUBURN UNIVERSITY FOUNDATION
BOARD MEMBER AND BAND ALUMNA

How To Give

“So many of our Auburn memories would be silent movies without the enriching presence of the Auburn University Marching Band. None of us would care to believe that our beloved AUMB is without an adequate place to rehearse and call ‘home’—but such is the case. It’s now time for those who love Auburn to give so that the AUMB will have a home befitting its title—the nation’s most outstanding marching band.”



MIKE WATSON '69, PRESIDENT & CEO OF THE FOUNDATION OF WESLEYWOODS, AUBURN UNIVERSITY FOUNDATION BOARD MEMBER & BAND ALUMNUS

“Participating in the Auburn University Marching Band the past three years has been such a blessing! Being part of this organization has allowed me to be an ambassador for Auburn while doing something I love. This experience continues to teach me life lessons of professionalism and hard work—qualities that I will carry with me after college.”



SARA BEASLEY, MAJORETTE AND AUBURN UNIVERSITY SENIOR

“Winston Churchill once said, ‘You make a living by what you get, you make a life by what you give.’ I am proud to give to the band program because, to me, it is the epitome of Auburn University—spirit, determination, commitment and patriotism—and that is the life I want to have.”



MEREDITH LUCK, BAND SUPPORTER

*commitment
& patriotism*

Your gift toward programmatic support of Auburn University’s new Band Complex should be made through the Auburn University Foundation, which is incorporated under the Alabama Non-Profit Corporation Act and functions as a separate support organization for Auburn University to receive charitable contributions. Gifts to the Auburn University Foundation, listed in IRS Publication 78 Cumulative List of Organizations described in Code 170(c)(3) of the Internal Revenue Code, are tax deductible.

The Auburn University Foundation’s Tax Exempt Identification Number is 63-6022422. Learn more about the Auburn University Foundation online at www.auburnuniversityfoundation.org





band.auburn.edu



AUBURN UNIVERSITY
COLLEGE OF LIBERAL ARTS

CONTACT US

Office of Development
College of Liberal Arts
317 Biggin Hall
Auburn, AL 36849-5223
334.844.1483
libart1@auburn.edu

AUBURN UNIVERSITY IS AN EQUAL OPPORTUNITY EMPLOYER/EDUCATIONAL INSTITUTION.

Designed by Adriene C. Simon '08, Office of External Affairs, College of Liberal Arts, 2012.